

**Features**

- High-temperature limit stop allows you to preset a comfortable maximum temperature to eliminate scalding.
- Completes Devonshire design solution with KOHLER fixtures and accessories.

**Material**

- Premium material construction for durability and reliability.
- KOHLER finishes resist corrosion and tarnishing, exceeding industry durability standards by over two times.

**Technology**

- Rite-Temp® pressure-balancing technology maintains water temperature within +/-3 degrees Fahrenheit.

**Required Accessories**

- K- 304-CX Pressure-balancing Valve Less Stops  
or  
K- 304-K Pressure-balancing Valve Less Stops  
or  
K- 304-KS Pressure-balancing Valve With Stops  
or  
K- 304-PS Pressure-balancing Valve With Stops  
or  
K- 304-PX Pressure-balancing Valve Less Stops  
or  
K- 304-US Pressure-balancing Valve With Stops  
or  
K- 304-UX Pressure-balancing Valve Less Stops  
or  
K- 304-CS Pressure-balancing Valve With Stops  
or  
K- 2971-KS 3/4" Pressure-balancing Valve

**Optional Accessories**

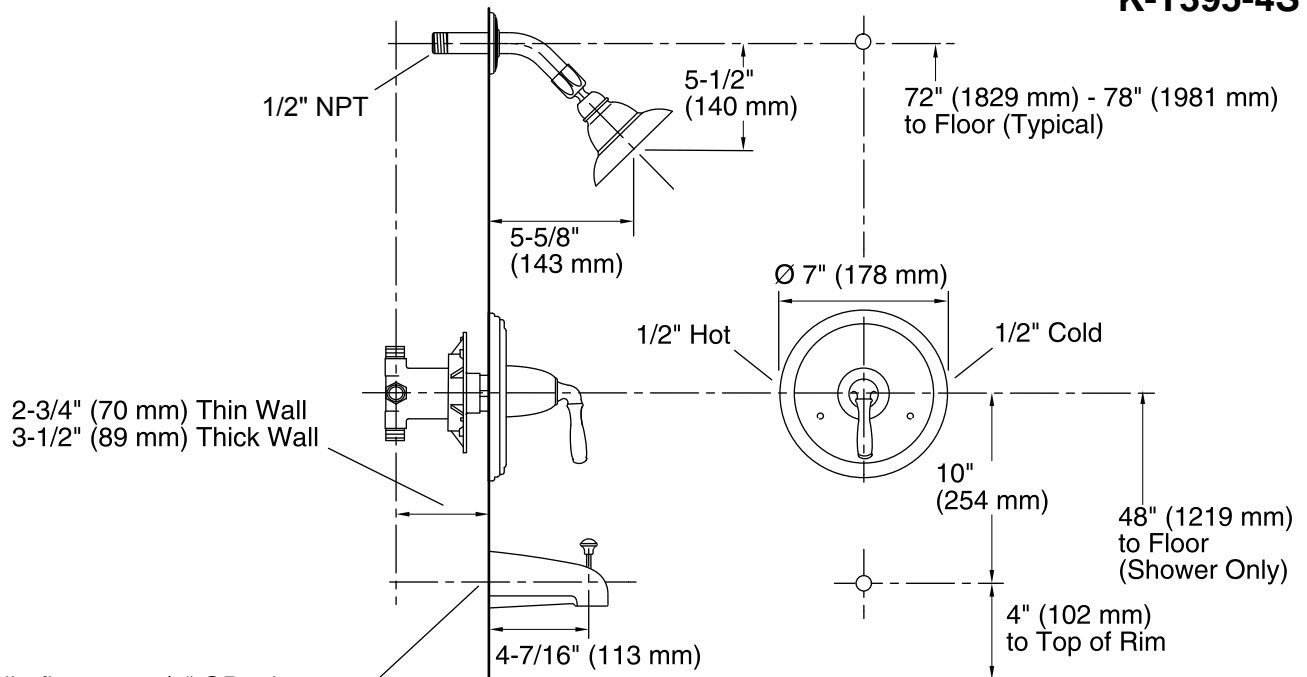
- 88526 Thin Wall Trim Kit  
1030932  
K- 373 Bath Spout Non-diverter with NPT Connection  
K- 373-S Bath Spout Non-diverter with Slip-fit Connection  
K- 389 Bath Spout Non-diverter with NPT Connection  
K- 389-S Bath Spout Non-diverter with Slip-fit Connection

**Codes/Standards**

ASME A112.18.1/CSA B125.1

**KOHLER® Faucet Lifetime Limited  
Warranty**

See website for detailed warranty information.



For slip-fit spout, 5/8" OD tube must extend 3-1/4" (83 mm) max beyond the finished wall.  
For 1/2" NPT spout, pipe must extend 3-5/8" (92 mm) beyond the finished wall.

Complete bath and shower faucet with Rite-Temp valve and slip-fit diverter spout shown.

### Technical Information

All product dimensions are nominal.

### Notes

Install this product according to the installation guide.

Install the Rite-Temp valve according to the valve installation guide.

**NOTICE:** Risk of product damage. Long screws, for installing trim, can damage the K-2971-KS valve. Consult the trim installation guide to verify if the thin wall installation kit (88526) is needed.

Cap shower outlet if deck-mounted spout, diverter, or handshower is connected to the spout outlet.

Install straight pipe or tube drop of 7" (178 mm) to 18" (457 mm) with single elbow between valve and wall-mount spout.

Avoid cross-flow conditions. Do not install shut-off device on either valve outlet.