

501 & RC501 COUPLINGS AND REDUCING COUPLINGS

SUBMITTAL INFORMATION



MATERIALS

CASTINGS

The end rings and center rings are cast from ductile (nodular) iron, meeting or exceeding ASTM A 536.

GASKETS

Gaskets are made from virgin Styrene Butadiene Rubber (SBR) compounded for water and sewer service in accordance with ASTM D 2000 MBA 710. Other compounds available for petroleum, chemical, or high temperature service.

BOLTS AND NUTS

5/8 inch, High strength low alloy steel trackhead bolts. National coarse rolled thread and heavy hex nuts. Steel meets AWWA C111 composition specifications. Stainless steel bolts and nuts available on request.

COATINGS

Shop coat applied to cast parts for corrosion protection in transit. Fusion bonded epoxy, liquid epoxy and other coatings available on request.

PRESSURE

When properly installed on a pipe that is within the correct outside diameter range, couplings in the Romac Style 501 line can be used at working pressures up to 260 psi. Higher working pressures available for specific applications.

STANDARD

Romac 501 couplings meet the specifications set forth in the AWWA Standard C219 coupling spec.

SIZES & RANGES

See catalog.

This information is based on the best data available at the date printed above. Please check with Romac for any updates or changes.

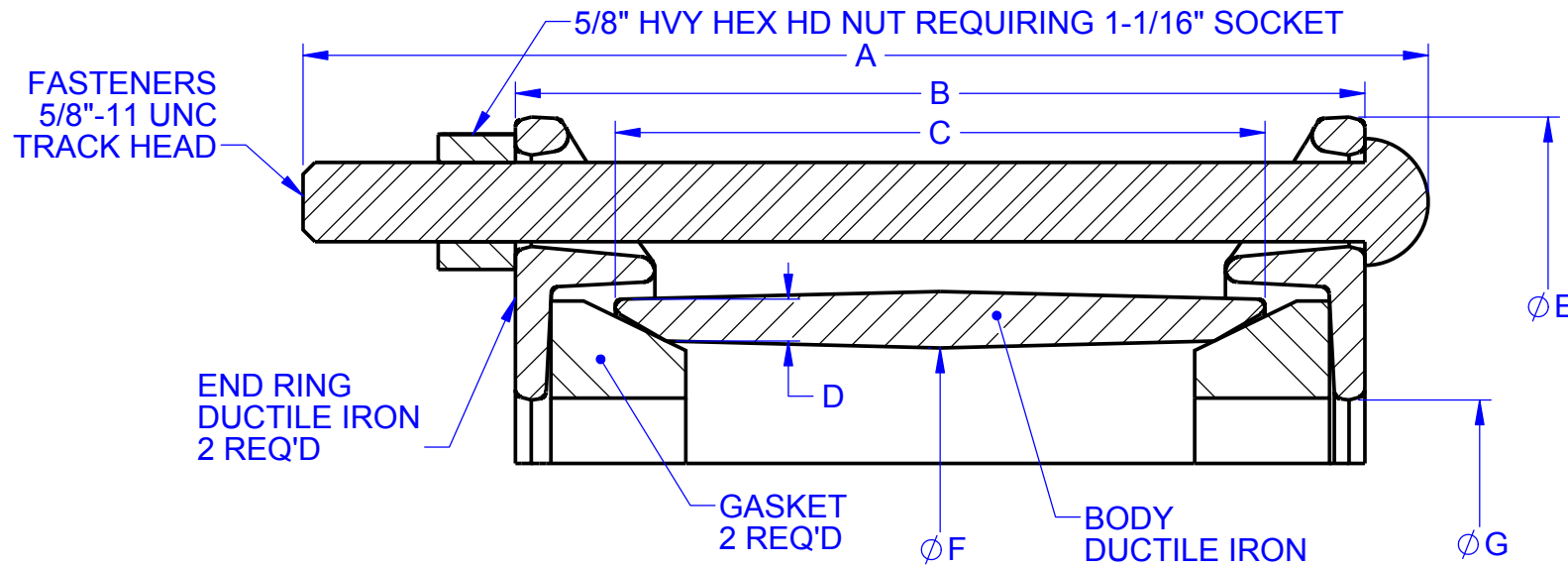
B1707-A

BODY SIZE	A	B	C	D	E	F	G			BOLTS		
							RED	BLACK	YELLOW	NO.	DIA.	LENGTH
2	8.50	7.10	5.00	0.34	6.30	3.04	3.05	N/A	N/A	2	5/8	8.00
3	11.00	7.30	5.00	0.38	7.39	4.04	4.05	N/A	N/A	4	5/8	10.50
4	8.50	7.00	5.00	0.34	8.63	5.46	4.90	5.35	5.50	4	5/8	8.00
6	8.50	7.00	5.00	0.45	11.19	7.63	7.00	7.37	7.63	5	5/8	8.00
8	8.50	7.00	5.00	0.45	13.44	9.85	9.16	9.53	9.80	6	5/8	8.00
10A	11.00	8.00	6.00	0.52	16.44	11.05	11.12	N/A	N/A	7	5/8	10.50
10B	11.00	8.00	6.00	0.52	16.44	12.20	N/A	11.44	12.21	7	5/8	10.50
12A	11.00	8.00	6.00	0.52	18.56	13.13	13.04	N/A	N/A	8	5/8	10.50
12B	11.00	8.00	6.00	0.52	18.56	14.58	N/A	13.69	14.50	8	5/8	10.50
14	12.00	9.00	7.00	0.55	21.25	16.96	16.53	15.87	17.06	9	5/8	11.50
16	12.00	9.00	7.00	0.55	23.25	19.06	18.61	17.97	19.05	10	5/8	11.50
18	12.00	9.00	7.00	0.75	25.00	20.35	19.18	19.72	20.40	12	5/8	11.50
20	12.00	9.00	7.00	0.75	26.75	22.43	21.37	22.00	22.31	12	5/8	11.50
22	12.00	9.00	7.00	0.75	28.88	24.42	23.50	24.19	24.50	13	5/8	11.50
24	15.50	12.00	10.00	0.8	31.50	26.49	25.45	26.13	26.56	14	5/8	15.00

REVISIONS			
REV.	DESCRIPTION	DATE	APPROVED
0	INITIAL RELEASE	8/23/92	HED
1	REVISED DIMS FOR 2& 3 SIZE	10/9/99	NST III
2	REVISED DIMS FOR 2 & 3 SIZE	3/17/00	NST III
3	ADDED 20", 22" & 24" SIZES	5/4/03	BP
4	REVISED BOLT LENGTHS, 10" - 24"	7/19/10	NST III
5	ADDED DIMS F& G 24" DIM "G" BLACK WAS 26.31	2/25/11	PNN
6	ADDED NOTES 1 - 3	4/22/11	PNN
7	12A & 12B BOLT LG WAS 11.50	3/27/12	PNN

NOTE:

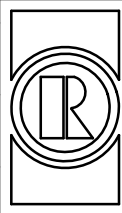
- FASTENERS: HSLA PER AWWA C111. STAINLESS STEEL TYPE 304 OR 316 AVAILABLE UPON REQUEST.
- PRESSURE RATED UP TO 260 PSIG WORKING, 325 PSIG TEST. FOR HIGHER PRESSURES CONTACT ROMAC ENGINEERING DEPARTMENT.
- SHOP COAT APPLIED TO CAST PRODUCTS FOR CROSION PROTECTION IN TRANSIT. FUSION BONDED EPOXY AVAILABLE ON REQUEST.



PROPRIETARY NOTICE
 THIS DRAWING CONTAINS CONFIDENTIAL PROPRIETARY INFORMATION AND IS THE PROPERTY OF ROMAC IND., INC. IT IS TO BE USED ONLY FOR THE PURPOSE FOR WHICH IT WAS SUBMITTED AND SHALL NOT HAVE ITS INFORMATION DISCLOSED OR REPRODUCED IN WHOLE OR IN PART FOR ANY PURPOSE WITHOUT PRIOR WRITTEN PERMISSION OF ROMAC IND., INC.

UNLESS OTHERWISE SPECIFIED
 DIMENSIONS ARE IN INCHES
 TOLERANCES ARE ON:
 1 PL DECIMALS ± .060
 2 PL DECIMALS ± .030
 3 PL DECIMALS ± .010
 ANGLES ± 1°
 FRACTIONS ± 1/64

SIGNATURES
 DRAWN _____
 CHECKED _____
 APPROVAL ORGANIZATIONS
 ENGINEERING



ROMAC INDUSTRIES INC.,
 BOTHELL, WA

TITLE
501 COUPLINGS, 2" - 24"

DWG. NO.	SIZE	REV. NO.	SCALE	SHEET
B1707-A	A	7	NTS	1 OF 1