



**Vintage®**  
6' Whirlpool Bath  
**K-702-H2**

**Features**

- Center drain.
- Integral lumbar support.
- 72" (1829 mm) x 42" (1067 mm) x 21-3/16" (538 mm)

**Material**

- Cast iron with Safeguard® finish.

**Hydrotherapy**

- Five fully adjustable Flexjet™ hydrotherapy jets for water flow and direction.
- Built-in 1500 W heater.
- Lighted keypad control.

**Installation**

- Drop-in

**Required Accessories**

K- 9695 5-Jet Trim Kit

**Recommended Accessories**

K- 1172 Adjustable Feet



**Codes/Standards**






ASME A112.19.1/CSA B45.2  
ASME A112.19.7/CSA B45.10  
UL 1795  
CSA C22.2 No. 218.2  
CARB P2

**KOHLER® Lifetime Limited Warranty  
for Cast Iron Components**

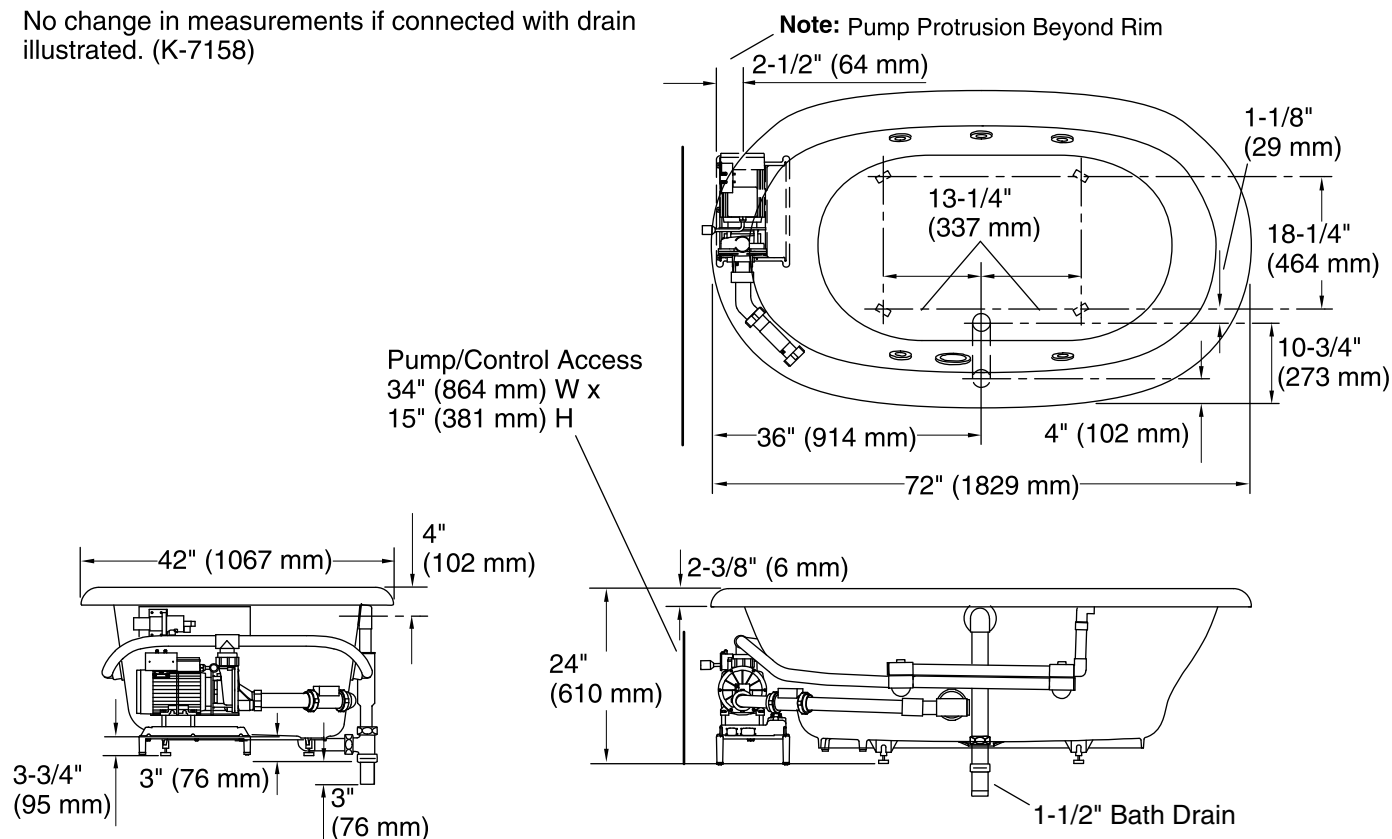
See website for detailed warranty information.

**Available Color/Finishes**

*Color tiles intended for reference only.*

Color	Code	Description
	0	White
	96	Biscuit
	47	Almond
	NY	Dune
	G9	Sandbar

No change in measurements if connected with drain illustrated. (K-7158)



### Required Electrical Service

One dedicated circuit required, protected with Class A Ground-Fault Circuit-Interrupter (GFCI) or Residual Current Device (RCD).

Pump, Heater: 240 V, 20 A, 50/60 Hz

### Technical Information

All product dimensions are nominal.

Installation:	Drop-in
Drain location:	Center
Basin area, bottom:	44" x 28" (1118 mm x 711 mm)
Basin area, top:	60" x 32" (1524 mm x 813 mm)
Weight:	555 lbs (251.7 kg)
Minimum floor load:	61 lbs/ft² (297.8 kg/m²)
Water depth:	15" (381 mm)
Water capacity:	82 gal (310.4 L)
Template:	Drop-in, 106594-7, required, included
Electrical component rating:	Pump: 240 V, 11 A, 50/60 Hz Heater: 240 V, 6 A, 1500 W
Pump speed:	Variable

### Notes

Measure your actual product for rough-in details.

Install this product according to the installation instructions.

The hot water supply should be 70% of the capacity of the bath or greater. Installations will vary.

Cast iron whirlpools are extremely heavy, making some drop-in installations difficult. Splitting the deck/surround is recommended if installing into a deck.