

# Figure 470 & 475 BRASS BODY BALL VALVES



## 2 PC FULL PORT 400 WOG PUMP ISOLATION VALVE

### Features:

- 400 WOG
- Full Port
- Flanged Pump Connection
  - by NPT End (Fig. 470)
  - by Sweat End (Fig. 475)
- Integral Flange (no added parts)
- Blow Out Proof Stem
- Adjustable Packing
- Forged Brass Body & End Cap
- Includes T-handle, Gasket, and Hardware



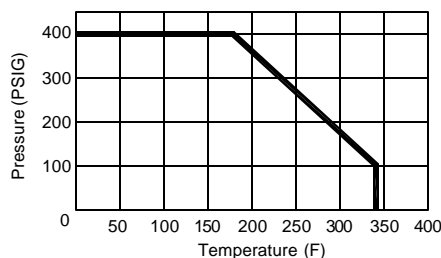
Fig. 470 - FNPT



Fig. 475 - Sweat



Includes T-handle, Gasket, and Hardware



The FNW 470 (NPT connection) and 475 (Sweat end connection) pump isolation valve decreases installation time and the number of possible leak paths by its integral pump flange connection. Pump isolation valves make pump servicing easier by isolating the pump and providing ease of disconnect for pump removal.

### Weights

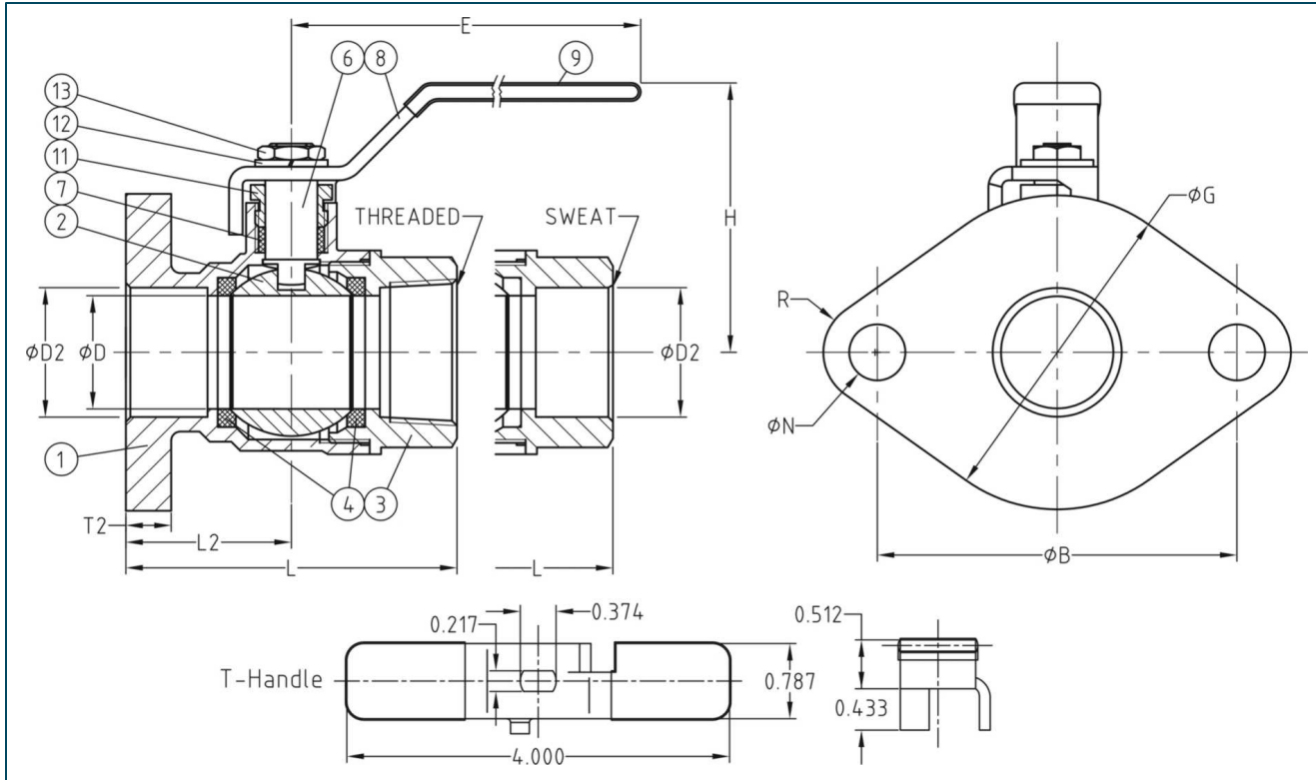
Size	Wt. (Lbs)	
	Fig 470	Fig 475
3/4	1.72	1.71
1	1.82	1.77
1-1/4	2.08	2.08
1-1/2	2.60	2.66

### Figure Number Matrix

F N W 4 7 END X			
END TYPE		SIZE CODES	
0 = NPT ENDS		3/4 = F	1-1/4 = H
5 = SWEAT ENDS		1 = G	1-1/2 = J

For other valve materials or configurations, contact FNW Valve at (503) 287-8383 for sales assistance.

### 2 PC FULL PORT 400 WOG PUMP ISOLATION VALVE



#### Dimensions (Inches)

Size	ØB	ØD	ØD2	Threaded Dimensions	E	ØG	H	L		L1	ØN	R	T2
								470	475				
3/4	3.150	0.748	0.878	3/4" - 14 NPT	4.331	2.756	2.382	2.421	2.618	1.220	0.492	0.453	0.394
1	3.150	0.984	1.126	1" - 11-1/2 NPT	4.331	2.756	2.559	2.815	3.071	1.378	0.492	0.453	0.394
1-1/4	3.150	1.142	1.378	1-1/4" - 11-1/2 NPT	4.331	2.756	2.717	3.090	3.543	1.535	0.492	0.453	0.394
1-1/2	3.150	1.457	1.628	1-1/2" - 11-1/2 NPT	4.331	2.756	2.913	3.465	3.917	1.732	0.492	0.453	0.394

#### Standard Materials

Ref. No.	Description	Material	Qty	Ref. No.	Description	Material	Qty	Remarks
1	Body	Brass - C37700	1	11	Gland Nut	Brass - C36000	1	
2	Ball	Brass - C37700	1	12	Handle Washer	ASTM G1566	1	
3	End Cap	Brass - C37700	1	13	Handle Nut	Steel - AISI-1010	1	
4	Seat	PTFE	2	14	Flange Bolt	Steel - AISI-1010	2	Not shown
6	Stem	Brass - C36000	1	15	Flange Nut	Steel - AISI-1010	2	Not shown
7	Stem Packing	PTFE	1	16	Flange Gasket	Rubber - NBR	1	Not shown
8	Handle	Steel - AISI-1010	1	17	T-Handle	Steel - AISI-1010	1	
9	Handle Cover	Plastic	1					