

EQUAL
TEE

MOLDED
FOR YOUR
INDUSTRY

IntegriFuseTM



 **INTEGRITY**
Fusion Products, Inc.

TOLL FREE 1-888-770-6330

INTEGRITYFUSION.COM

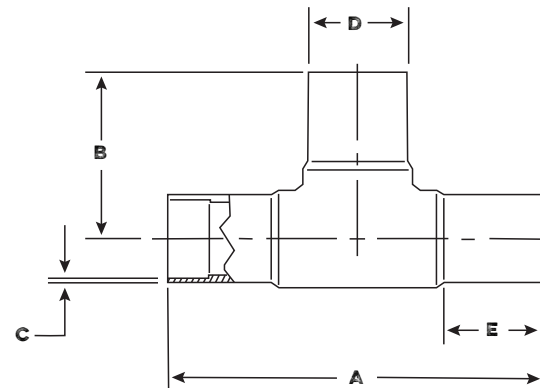
The difference MOLDED Makes

Integrity Fusion continues to be the market leader in electrofusion fittings, by offering innovative solutions to all of your fusible needs. Our IntegriFuse brand EF Equal Tees are molded in sizes up through 8" IPS and fully pressure rated to SDR 11. The EF Tees are manufactured with electrofusion outlets on the mainline, and butt fusion on the outlet, allowing the installer several options when connecting the lateral line. Electrofusion Tees offer a convenient alternative to traditional butt fusion when dealing with tight spaces, repairs, vertical applications, or any project when difficult to utilize butt fusion equipment.

IntegriFuse EF Fittings are manufactured from the highest quality black high density bimodal polyethylene copolymer resin designed for use in, but not limited to, potable water, natural gas, industrial, landfill, oil & gas, and mining applications.

All IntegriFuse fittings meet ASTM –D2513 & ASTM D3261 (where applicable).
FM Approved.

Integrity Fusion Products, Inc.
270 Parkade Court
Peachtree City, GA 30269
P: 1-888-770-6330 • P: 770-632-7530
F: 770-632-7540
E: Info@IntegrityFusion.com



IPS-SDR 9 - 255 PSI (Working Pressure at 73.4° F)

Nominal Size	A	B	C	D	E	Weight	Item Code	Notes
2" IPS	8.66"	4.33"	0.264"	2.375"	2.47"	1.1 lbs.	100707	FM 250
3" IPS	11.81"	5.91"	0.389"	3.500"	3.54"	2.4 lbs.	100711	FM 250
4" IPS	13.78"	6.89"	0.500"	4.500"	3.94"	4.5 lbs.	100715	FM 250
6" IPS	18.11"	9.06"	0.736"	6.625"	4.72"	12.3 lbs.	100719	FM 250
8" IPS	23.62"	11.81"	0.958"	8.625"	5.71"	25.1 lbs.	100723	FM 250

IPS-SDR 7 - 355 PSI (Working Pressure at 73.4° F)

Nominal Size	A	B	C	D	E	Weight	Item Code	Notes
2" IPS	8.66"	4.33"	0.339"	2.375"	2.47"	1.0 lbs.	100706	FM 335
3" IPS	11.81"	5.91"	0.500"	3.500"	3.54"	2.9 lbs.	100710	FM 335
4" IPS	13.78"	6.89"	0.643"	4.500"	3.94"	5.5 lbs.	100714	FM 335
6" IPS	18.11"	9.06"	0.946"	6.625"	4.72"	14.7 lbs.	100718	FM 335
8" IPS	23.62"	11.81"	1.232"	8.625"	5.71"	32.1 lbs.	100722	FM 335

DIPS-SDR 11 - 200 PSI (Working Pressure at 73.4° F)

Nominal Size	A	B	C	D	E	Weight	Item Code	Notes
4" DIPS	15.63"	7.82"	0.436"	4.800"	4.10"	4.8 lbs.	100728	FM 200
6" DIPS	19.34"	9.67"	0.627"	6.900"	5.10"	11.6 lbs.	100729	FM 200
8" DIPS	23.15"	11.58"	0.823"	9.050"	5.20"	24.7 lbs.	100730	FM 200
10" DIPS	24.60"	12.20"	1.200"	11.100"	5.11"	39.0 lbs.	100731	FM 200
12" DIPS	28.45"	14.17"	1.27"	13.25"	6.0"	70.70 lbs.	100732	FM 200

