



STAINLESS STEEL  
**HAND SINKS**  
**A.D.A COMPLIANT LAVATORIES**



7-PS-25



7-PS-75



7-PS-26

**FRONT LOADING  
PAPER TOWEL DISPENSER UNITS**



7-PS-41



7-PS-46



Optional A.D.A. Compliant Bubbler can be added to the 7-PS-25, 7-PS-26 & 7-PS-75 Only  
Use Model # K-47

**Item #:** \_\_\_\_\_ **Qty #:** \_\_\_\_\_

**Model #:** \_\_\_\_\_

**Project #:** \_\_\_\_\_

**FEATURES:**

One piece **Deep Drawn** sink bowl design.

Sink bowl is 16" x 14" x 5".

All sink bowls have a large liberal radii with a minimum dimension of 2" and are rectangular in design for increased capacity.

Keyhole wall mount bracket.

1 1/2" stainless steel drain with strainer plate.

**Additional Specific Features:**

**7-PS-25** 6" Extended deck mounted gooseneck faucet with wrist handles & deck mounted liquid soap dispenser.

**7-PS-26** includes a "Hands Free" AC/DC operated gooseneck faucet & deck mounted, liquid soap dispenser.

**7-PS-75** Sink Only. Faucet not included. Three 1-3/8" dia. Holes Punched.

**7-PS-41** includes a "Hands Free" AC/DC operated gooseneck faucet & deck mounted, liquid soap dispenser.

Front loading paper towel dispenser (Standard C-Fold Towels).

Stainless Steel Skirt with Removable Access Panel and enclosed bottom for storage. Optional **TA-14** lock available.

**7-PS-46** 6" Extended splash mounted gooseneck faucet with wrist handles & deck mounted liquid soap dispenser.

Front loading paper towel dispenser (Standard C-Fold Towels).

Stainless Steel Skirt with Removable Access Panel and enclosed bottom for storage. Optional **TA-14** lock available.

**CONSTRUCTION:**

All TIG welded.

Welded areas blended to match adjacent surfaces and to a satin finish.

Die formed Countertop Edge with a 3/8" No-Drip offset.

Bowl made from One sheet of stainless steel - No Seams.

**MATERIAL:**

Heavy gauge type 304 series stainless steel.

Wall mounting bracket is Galvanized and of offset design.

All fittings are brass / chrome plated unless otherwise indicated.

**MECHANICAL:**

Faucet supply is 1/2" IPS male thread hot and cold.

Standard Faucet conforms to NSF 61 Standard 9.

Faucets Are AB1953 Lead Free Compliant.

For Replacement Faucets & Upgrades, Drains & Accessories  
visit our website at [www.advancetabco.com](http://www.advancetabco.com)



**Customer Service Available To Assist You 1-800-645-3166 8:30 am - 8:00 pm E.S.T.**

Email Orders To: [customer@advancetabco.com](mailto:customer@advancetabco.com). For Smart Fabrication™ Quotes, Email To: [smartfab@advancetabco.com](mailto:smartfab@advancetabco.com) or Fax To: 631-586-2933

**NEW YORK**  
Fax: (631) 242-6900

**GEORGIA**  
Fax: (770) 775-5625

**TEXAS**  
Fax: (972) 932-4795

**NEVADA**  
Fax: (775) 972-1578

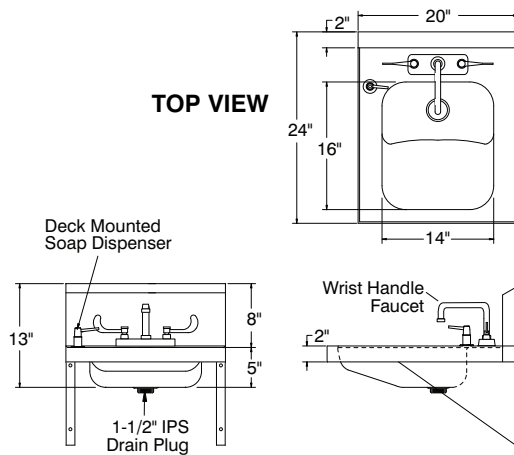
# DIMENSIONS and SPECIFICATIONS

TOL Overall:  $\pm .500''$  Interior:  $\pm .250''$

FITTINGS SUPPLIED AS SHOWN

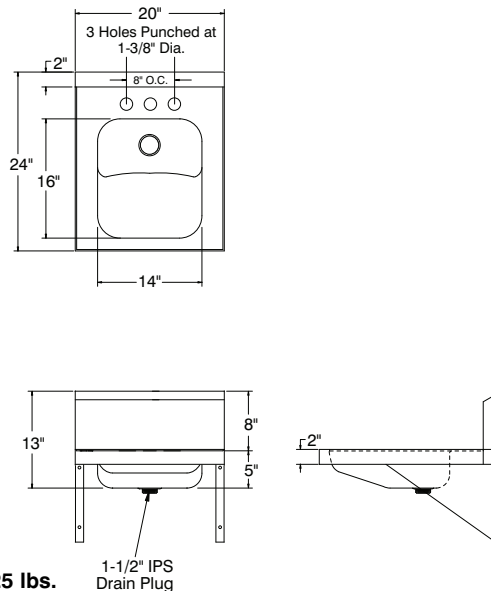
ALL DIMENSIONS ARE TYPICAL

## 7-PS-25



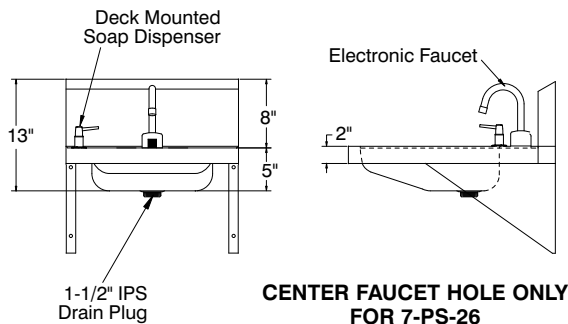
25 lbs.

## 7-PS-75



25 lbs.

## 7-PS-26



25 lbs.

### Optional 8" O.C. Faucets Available



**Heavy Duty  
5-1/2" Gooseneck**

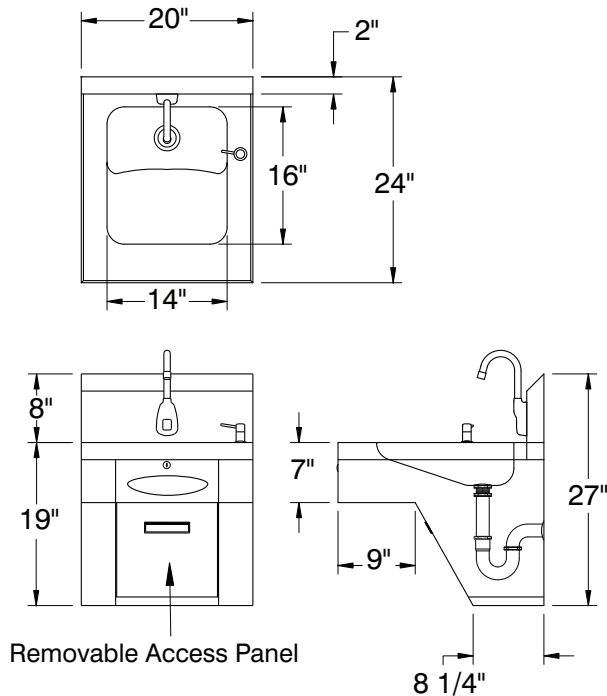
K-132



**Heavy Duty  
9" Swing Spout**

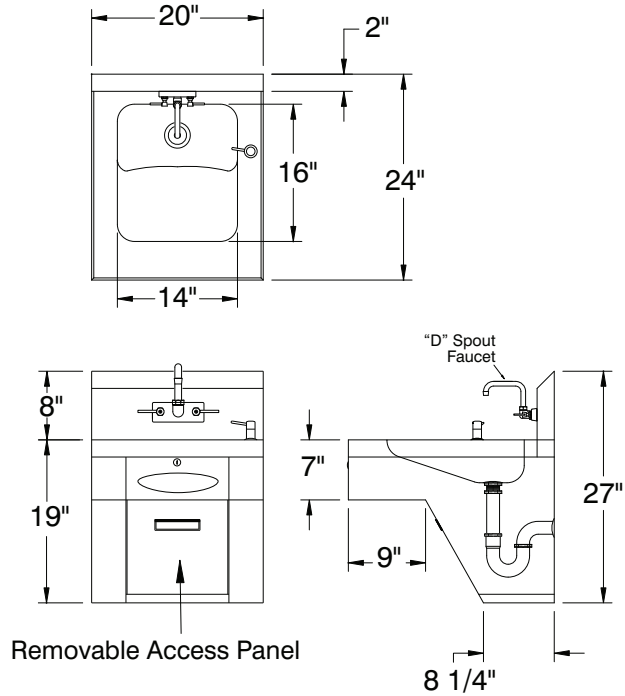
K-133

## 7-PS-41



43 lbs.

## 7-PS-46



43 lbs.

