



Figure 7044 Branch Outlet

The Gruvlok Fig. 7044 Branch Outlet is for the direct connection of sprinkler heads, drop nipples and/or gauges. The branch outlet provides an economical, quick, and easy outlet at any location along a pipe. Specially engineered to conform to the pipe OD, the Fig. 7044 provides a leak tight reliable seal in both positive pressure and vacuum conditions. The maximum working pressure for all sizes is 175 PSI (12.1 bar).

Material Specifications:

- **Housing:**
Ductile Iron conforming to ASTM-A536, Grade 65-45-12
- **Coatings:**
Black
- **U-bolt & Nuts:**
Plated U-bolt conforming to ASTM A307 with plated hex nuts to ASTM A563.

- **Gaskets:**
Properties as designated by ASTM D-2000.
Grade E Type A
Service Temperature Range: -40°F to +150°F
Recommended for water service, dilute acids, alkalis, salts and many chemical services not involving hydrocarbons, oils or gases.
NOT FOR USE WITH HYDROCARBONS.

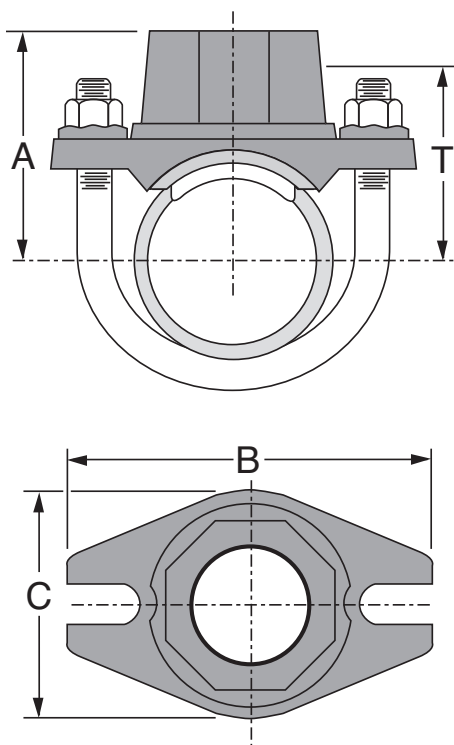


FIGURE 7044 BRANCH OUTLET										
Nominal Size	Pipe OD	Hole Diameter		Dimensions				Specified Torque		Approx. Wt. Each
		Min. Dia.	Max. Dia.	A	B	C	Take-out T	Min.	Max.	
In./DN(mm)	In./mm	In./mm	In./mm	In./mm	In./mm	In./mm	In./mm	Ft.-Lbs./N-M		Lbs./Kg
1¼ x ½ 32 x 15	1.660 x 0.840 42.4 x 21.3	1⅞ 30	1¼ 32	2⅞ 53	3½ 89	2⅞ 56	1⅞ 35	27 37	33 45	0.8 0.4
1¼ x ¾ 32 x 20	1.660 x 1.050 42.4 x 26.7	1⅞ 30	1¼ 32	2⅞ 53	3½ 89	2⅞ 56	1⅞ 35	27 37	33 45	0.8 0.4
1¼ x 1 32 x 25	1.660 x 1.315 42.4 x 33.7	1⅞ 30	1¼ 32	2⅞ 56	3½ 89	2⅞ 56	1½ 38	27 37	33 45	0.9 0.4
1½ x ½ 40 x 15	1.900 x 0.840 48.3 x 21.3	1⅞ 30	1¼ 32	2⅞ 55	3½ 89	2⅞ 56	1⅞ 35	27 37	33 45	0.8 0.4
1½ x ¾ 40 x 20	1.900 x 1.050 48.3 x 26.7	1⅞ 30	1¼ 32	2⅞ 55	3½ 89	2⅞ 56	1⅞ 35	27 37	33 45	0.8 0.4
1½ x 1 40 x 25	1.900 x 1.315 48.3 x 33.7	1⅞ 30	1¼ 32	2⅞ 58	3½ 89	2⅞ 56	1½ 38	27 37	33 45	0.9 0.4
2 x ½ 50 x 15	2.375 x 0.840 60.3 x 21.3	1⅞ 30	1¼ 32	2½ 64	3⅞ 98	2⅞ 56	1⅞ 42	27 37	33 45	0.8 0.4
2 x ¾ 50 x 20	2.375 x 1.050 60.3 x 26.7	1⅞ 30	1¼ 32	2½ 64	3⅞ 98	2⅞ 56	1⅞ 42	27 37	33 45	0.8 0.4
2 x 1 50 x 25	2.375 x 1.315 60.3 x 33.7	1⅞ 30	1¼ 32	2½ 67	3⅞ 98	2⅞ 56	1¼ 45	27 37	33 45	0.9 0.4
2½ x ½ 65 x 15	2.875 x 0.840 73.0 x 21.3	1⅞ 30	1¼ 32	2⅞ 69	4⅞ 111	2⅞ 56	2 51	27 37	33 45	0.8 0.4
2½ x ¾ 65 x 20	2.875 x 1.050 73.0 x 26.7	1⅞ 30	1¼ 32	2⅞ 69	4⅞ 111	2⅞ 56	2 51	27 37	33 45	0.9 0.4
2½ x 1 65 x 25	2.875 x 1.315 73.0 x 33.7	1⅞ 30	1¼ 32	2⅞ 72	4⅞ 111	2⅞ 56	2⅞ 54	27 37	33 45	1.0 0.5

Not for use in copper systems.

Installation & Assembly - Fig. 7044 Branch Outlet

ALWAYS USE A GRUVLOK LUBRICANT FOR PROPER BRANCH OUTLET ASSEMBLY. Thorough lubrication of the gasket is essential to prevent pinching and possible damage to the gasket.



Step 1

1 Check & lubricate gasket

Drill the appropriate size hole in the pipe and remove burrs. Visually inspect the gasket seating for surface defects which may prevent gasket sealing. Lubricate one side of the gasket with Gruvlok® lubricant and place it in the fitting.



Step 2

2 Gasket Installation

Lubricate the exposed side of the gasket with Gruvlok® lubricant.



Step 3

3 Alignment

Align the gasket and fitting above the pipe hole.



Step 4

4 Housing Assembly

Attach the U-bolt from the other side and fasten the nuts finger tight.



Step 5

5 Tighten Nuts

Making sure the fitting is properly located over the pipe hole, Tighten the nuts alternatively to a recommended torque of 27 to 33 Lbs.-Ft. (37 to 45 N-M).



Step 6

6 Assembly is completed



ILLINOIS: University Park 60466, 750 Central Ave., Phone: (708) 534-1414, Fax: (708) 534-5441
NEVADA: Sparks 89431, 1385 Greg Street, Phone: (775) 331-7029, Fax: (775) 331-5075
PENNSYLVANIA: Bristol 19007, 2530 Pearl Buck Road, Phone: (215) 788-4056, Fax: (215) 788-4475
TEXAS: Grand Prairie 75050, 1313 Avenue R, Phone: (972) 343-9206, Fax: (972) 641-8946

#072 / Printed in USA / RPI / 2.04 / 2.5M / ©2004