

## Features

- KOHLER® cast iron.
- Under-mount.
- Oval basin.
- Without overflow.
- No faucet holes; requires wall- or counter-mount faucet.
- Coordinates with other products in the Serif collection.
- 20-5/8" (524 mm) x 15-1/4" (387 mm)

## Recommended Accessories

K- 9018 P-Trap

## Components

Additional included component/s: Basin clamp assembly.



ADA

## Codes/Standards

ASME A112.19.1/CSA B45.2

ADA

ICC/ANSI A117.1

## KOHLER® Lifetime Limited Warranty for Cast Iron Components

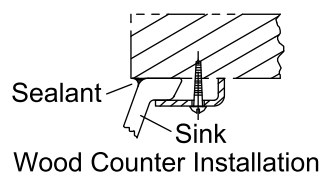
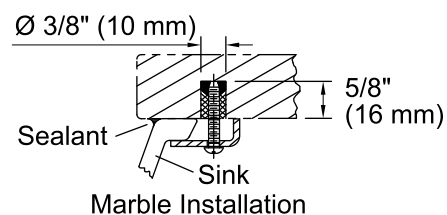
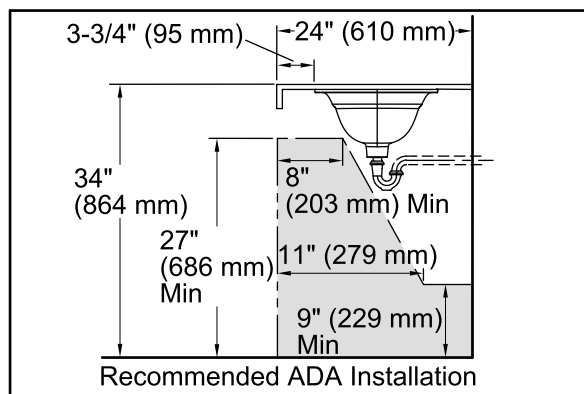
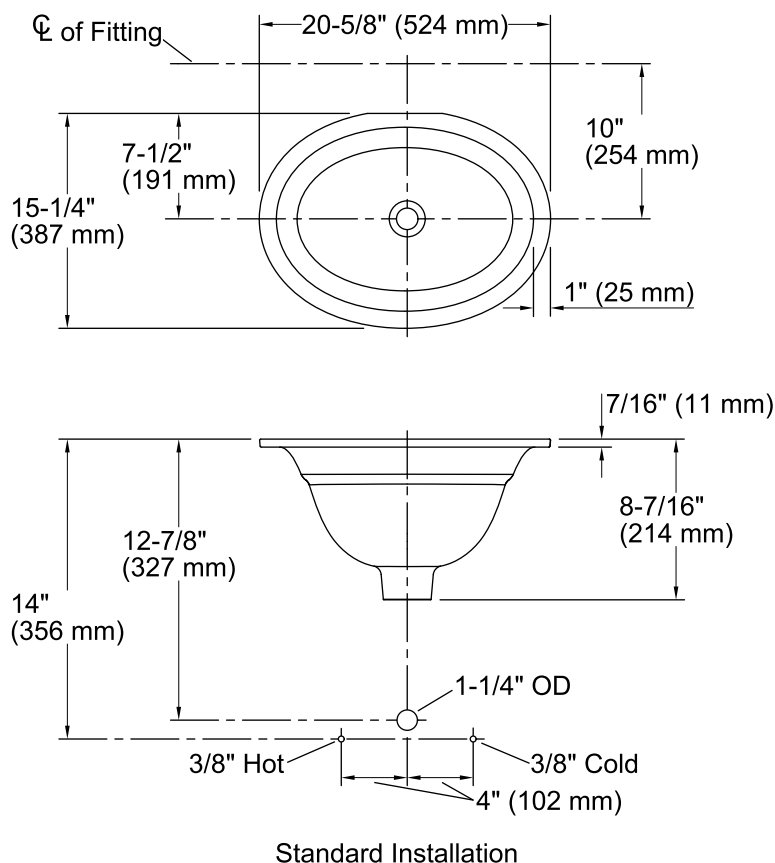
See website for detailed warranty information.

## Available Color/Finishes

*Color tiles intended for reference only.*

| Color  | Code | Description   |
|--|------|---------------|
|  | 0    | White         |
|  | FF   | Sea Salt™     |
|  | 96   | Biscuit       |
|  | 47   | Almond        |
|  | FD   | Cane Sugar™   |
|  | NY   | Dune          |
|  | 95   | Ice™ Grey     |
|  | G9   | Sandbar       |
|  | KC   | Vapour™ Blue  |
|  | KG   | Vapour™ Green |
|  | FT   | Basalt        |
|  | 20   | Suede         |
|  | KA   | Black 'n Tan  |
|  | 7    | Black Black™  |

## Under-mount Bathroom Sink K-2824



### Technical Information

All product dimensions are nominal.

Bowl configuration: Single

Installation: Under-mount

Bowl area (Only) Length: 17-3/4" (451 mm)  
Width: 12-3/4" (324 mm)  
Water depth: 6-7/16" (164 mm)

Drain hole: 1-5/8" (41 mm)

Template: Under-mount, 1039083-7, required, included

### Notes

Install this product according to the installation guide.

Supplied basin clamp assemblies require 1" (25 mm) minimum countertop thickness. Installer must supply anchors for thinner countertops.

NOTICE: The countertop manufacturer or cutter must use the cutout template provided with the product, or a current one provided by the Kohler Co. (call 1-800-4KOHLER). Kohler Co. is not responsible for cutout errors when the incorrect cutout template is used.

ADA compliant when installed to the specific requirements of these regulations.