

17100 SERIES

FLOOR-MOUNT, Concealed Arms

APPLICATION

For use with lavatories punched for concealed arms where thin wall construction demands uprights that support the fixture completely independent of the wall.

SPECIFICATION

JOSAM 17100 Series floor-mounted single Lavatory Carrier with concealed arms, leveling and securing screws, structural uprights and welded feet.

Available Options

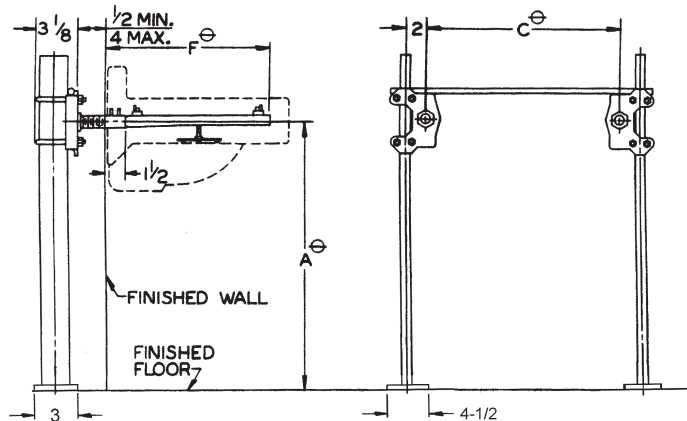
- ▼ -BB Back-to-Back Carrier
- 10 Extension Sleeves Longer Than Standard, Specify Wall Thickness
- 60 Valve Plate for Attaching to Upright
- 67 Concealed Arm Carrier for Wheelchair Lavatory
- 75 2" Chrome-Plated Escutcheons
- 76 4" Chrome-Plated Escutcheons
- 77 6" Chrome-Plated Escutcheons

STD. ADJUSTABLE SLEEVE 6-1/2"

⊖ VARIABLE – DEPENDS ON FIXTURE.

RECOMMEND ALL FEET BE SECURED TO FLOOR WITH 1/2" BOLTS AND ANCHORS BY OTHERS.

REUSABLE ALIGNMENT TOOL AVAILABLE. SEE PAGE 45.



43 LBS

17100-BB SERIES

FLOOR-MOUNT, -BB Back-to-Back

APPLICATION

For use with back-to-back lavatories punched for concealed arms where thin wall construction demands uprights that support the fixture completely independent of the wall.

SPECIFICATION

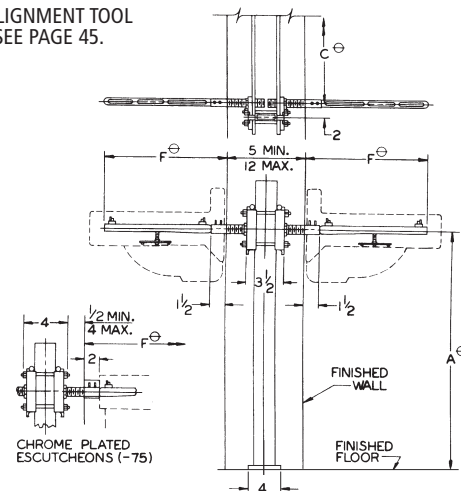
JOSAM 17100-BB Series floor-mounted, back-to-back Lavatory Carrier with concealed arms, leveling and securing screws, structural uprights and welded feet.

STD. ADJUSTABLE SLEEVE 6-1/2"

⊖ VARIABLE – DEPENDS ON FIXTURE.

RECOMMEND ALL FEET BE SECURED TO FLOOR WITH 1/2" BOLTS AND ANCHORS BY OTHERS.

REUSABLE ALIGNMENT TOOL AVAILABLE. SEE PAGE 45.



51 LBS

17120 SERIES

WALL-MOUNT, Concealed Arms

APPLICATION

For use with lavatories punched for concealed arms where wall construction will support the fixture and carrier assembly.

SPECIFICATION

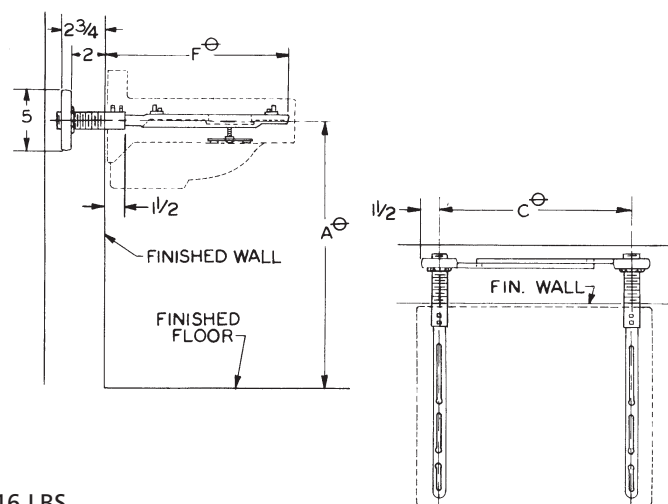
JOSAM 17120 Series wall-mounted, single Lavatory Carrier with concealed arms, leveling and securing screws and adjustable wall plate.

Available Options

- ▼ -BP with Back Plates
- ▼ -MMB with Movable Mounting Brackets
- ▼ -10 Extension Sleeves Longer Than Standard, Specify Wall Thickness
- 75 2" Chrome-Plated Escutcheons
- 76 4" Chrome-Plated Escutcheons
- 77 6" Chrome-Plated Escutcheons

STD. ADJUSTABLE SLEEVE 4"

⊖ VARIABLE – DEPENDS ON FIXTURE.



16 LBS