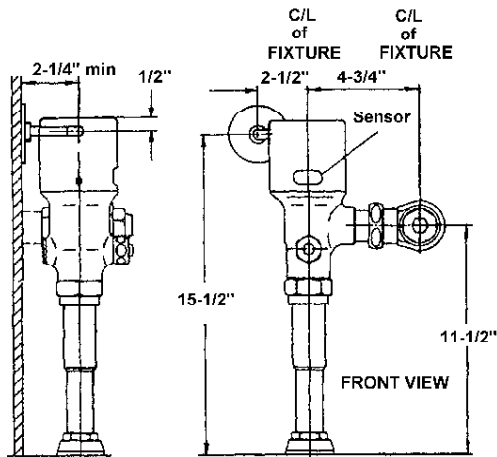


Hydrotek Autoflush Valves

H-8000C (AC) and HB-8000C Series (Battery)

H-8000C SERIES (AC Powered)

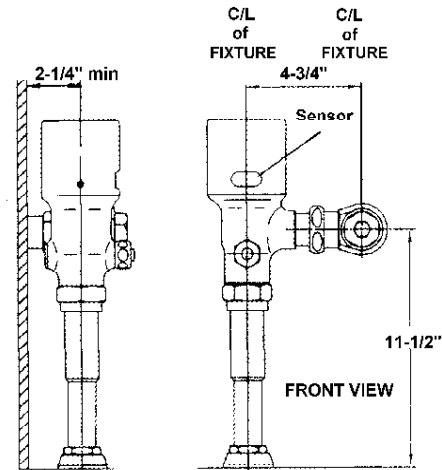


H-8000C-A
1" IPS Angle Stop
1-1/2" Top Spud

H-8000C-B1
3/4" IPS Angle Stop
3/4" Top Spud

H-8000C-B2
1" IPS Angle Stop
1-1/4" Top Spud

HB-8000C SERIES (Battery Powered)



H-8000C-A
1" IPS Angle Stop
1-1/2" Top Spud

H-8000C-B1
3/4" IPS Angle Stop
3/4" Top Spud

H-8000C-B2
1" IPS Angle Stop
1-1/4" Top Spud

STANDARD PACKAGE INCLUDES:

EXPOSED FLUSH VALVE MODELS

H-8000C HB-8000C HB8RFKC (A-B1-B2) (A-B1-B2) (C-U)

X	X	X	(1) Flush valve
X	X		(1) Stop valve
X	X		(1) Sweat Kit
X	X		(1) Flush Tube
X	X		(1) Spud coupling
X	X		(1) Vacuum breaker
X			(1) Plug-in AC Adapter
X			(1) Wall Flange
X			(1) AC Input Tube
	X	X	(4) AA Alkaline Batteries

OPTIONAL ACCESSORIES:

- HC-010 Multi-Unit Power Adapter: Powers up to 8 Flush Valve units. (AC Powered only)

HB8RFKC Retrofit Flush Valve Models:

- HB8RFKC-C Hydrotek Retrofit battery-powered closet flush valve. Unit bolts to Sloan or Zurn stop valve and flush tube.
- HB8RFK-U Same as above, but for urinals
- HB8RFKC-CD Hydrotek Retrofit battery-powered closet flush valve. Unit bolts to Delany stop valve and flush tube
- HB8RFKC-UD Same as above, but for urinal

PLUMBING SPECIFICATIONS:

Model #	Fixture	Supply Line	Top Spud	Flow Rate
H/HB-8000C-A	Closet	1"	1-1/2"	1.6 GPF
H/HB-8000C-A-1.28	Closet	1"	1-1/2"	1.28 GPF
H/HB-8000C-B1	Urinal	3/4"	3/4"	1.0 GPF
H/HB 8000C-B2	Urinal	1"	1-1/4"	1.0 GPF
HB8RFKC	C-U	N/A	N/A	0.5-3.5 GPF

- AC & Battery Powered Concealed Flush Valves Available

- Meets A.S.S.E. Standard 1037-89

ELECTRICAL REQUIREMENTS:

- AC Powered Unit:

- Solenoid valve and sensor, 6V DC
- Transformer: Input 120V AC, 60 Hz
Output 12V DC

- Battery Powered Unit:

- Solenoid valve and sensor, 6V DC
- Battery: (4) AA Alkaline Batteries
- Battery Service Life: 400,000 flushes, up to 4 years

Hydrotek International, Inc.

957 N Pennsylvania Avenue
Winter Park, FL 32789
1.800.922.9883
407.647.0471 (FAX)
www.hydrotekintl.com

