

AB&A for Commercial & Residential Applications

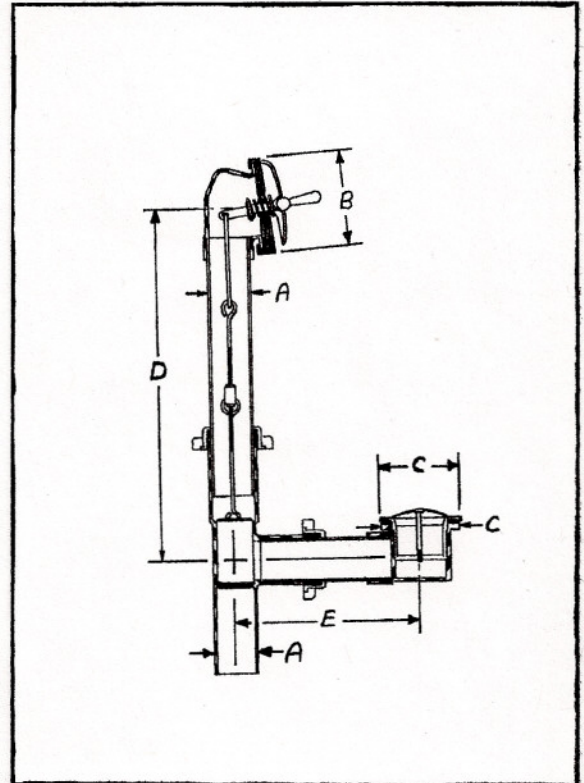
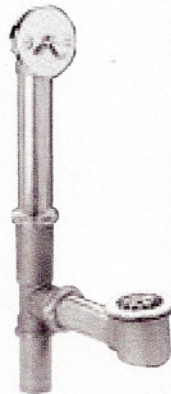
Job Name _____ Contractor _____
 Job Location _____ Approval _____
 Engineer _____ Contractor's P.O. No. _____
 Approval _____ Representative _____

Series 14309

**Brass Bath Waste and Overflow
 Extra Long
 with Fits-All Trip Lever and Assembly**

**Manufactured to ASME Standard
 ASME A 112.18.2-2005 / CSA B 125.2-05**

Part #	To Submit	Quantity
14309		
14330		



Part #	Description		Dimensions				
	Material	Finish	A	B	C	D Min. to Max.	E Min. to Max.
14309	Brass	Chrome Plated Finish on Trim ONLY	1-1/2" O.D.	3-3/8"	2-15/16"	20-9/16" to 23-3/16"	11-1/16" to 11-1/2"
14330	Brass	Special Finish on Trim ONLY	1-1/2" O.D.	3-3/8"	2-15/16"	20-9/16" to 23-3/16"	11-1/16" to 11-1/2"

AB&A's product specifications are approximate and for Reference Only. AB&A products are based on the United States of America customary units of measure. AB&A reserves the right to change or modify product design, specifications, materials, or construction without prior notice. AB&A reserves the right to not incur any obligation to make such changes and modifications on all previously or subsequently sold AB&A products.



**AMERICAN BRASS & ALUMINUM
 FOUNDRY, INC.**

2060 GARFIELD AVE., CITY OF COMMERCE, CA 90040

800-545-9988

FAX 800-835-7020

WWW.ABAFOUNDRY.COM

WWW.ABAINC.NET