



Maratea®

Drop-in Bathroom Sink
K-2831-4

Features

- Without overflow.
- 4-inch center faucet holes.
- Oval basin.
- 22-5/8" (575 mm) x 17-1/4" (438 mm)

Material

- KOHLER® enameled cast iron.

Installation

- Drop-in

Recommended Accessories

K- 8998 P-Trap



ADA

CSA B651

OBC

Codes/Standards

ASME A112.19.1/CSA B45.2

ADA

ICC/ANSI A117.1

CSA B651



OBC

KOHLER® Lifetime Limited Warranty for Cast Iron Components

See website for detailed warranty information.

Available Color/Finishes

Color tiles intended for reference only.

Color	Code	Description
	0	White
	FF	Sea Salt™
	96	Biscuit
	47	Almond
	FD	Cane Sugar™
	FT	Basalt
	KA	Black 'n Tan

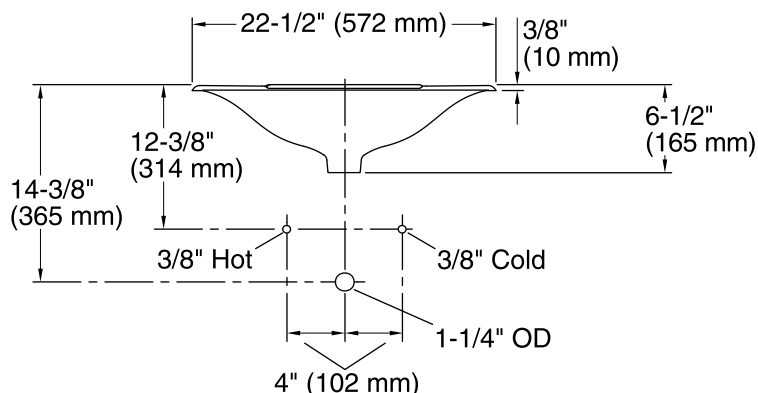
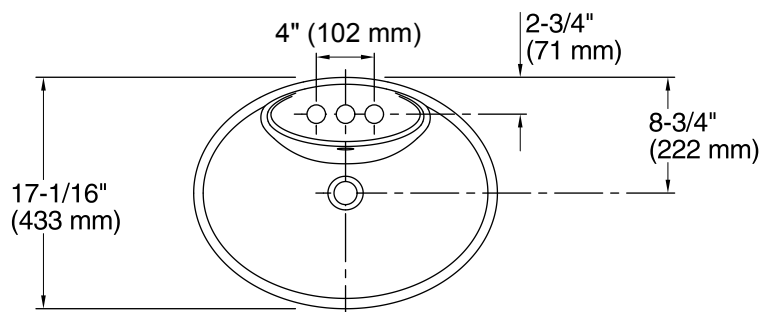
USA/Canada: 1-800-4KOHLER (1-800-456-4537)

Kohler Co. reserves the right to make revisions without notice to product specifications.

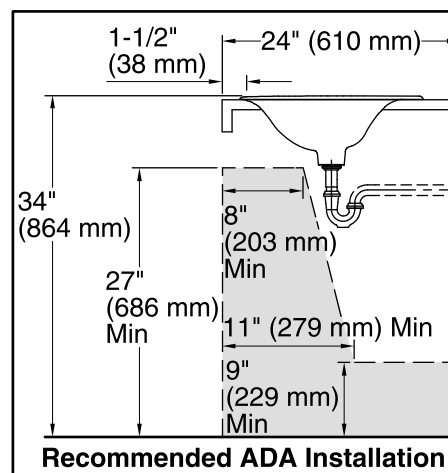
For the most current Specification Sheet, go to www.kohler.com.

3-27-2016 04:37

THE BOLD LOOK
OF **KOHLER®**



Standard Installation



Technical Information

All product dimensions are nominal.

Bowl configuration: Single

Installation: Drop-In

Bowl area (Only) Length: 21-1/16" (535 mm)
Width: 11-1/4" (286 mm)
Bowl depth: 4-1/2" (115 mm)
Water depth: 4-1/2" (115 mm)

Number of deck holes: 3

Faucet hole(s): 1-3/8" (35 mm)

Drain hole: 1-3/4" (44 mm)

Template: Drop-in, 1046628-7, not required, included

Notes

Install this product according to the installation guide.

NOTICE: Countertop manufacturer or cutter must use the cut-out template provided with the product, or a current one provided by Kohler Co. (call 1-800-4-KOHLER). Kohler Co. is not responsible for cutout errors when the incorrect cut-out template is used.

Product does not have an overflow.

ADA, OBC, CSA B651 compliant when installed to the specific requirements of these regulations.