

# Contractor's Design™

Suitable for any space, the discreet style of the Contractor's Design fits comfortably in any environment.



Brush Nickel Contractor's Design with 52" Contractor's Design  
Rosewood Blades

Model-Finish **CD52BN**  
Blade-Finish **BCD52-RW3**  
Light-Finish **Not Shown**

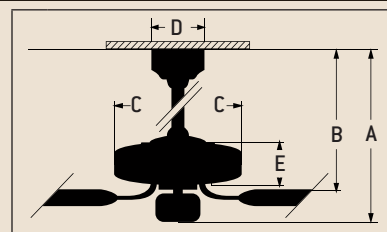
## Features

- Standard, 3 Speed Reversible Motor
- 2" and 4" Downrods *(Included)*
- 30 Year Limited Warranty
- Blades Sold Separately
- Light Kit Adaptable *(Optional)*
- Universal Control Adaptable *(Optional)*
- Additional Blade Selections In 42" Size Available
- Energy Star Qualified

## Specs

- |  |            |
|--|------------|
| ■ Blade Sweep Opt.   | 42", 52"   |
| ■ Number of Blades   | 5          |
| ■ Blade Pitch  | 12°        |
| ■ Motor Size (MM)  | 153 x 12   |
| ■ AMPS (HI Speed)  | 0.5        |
| ■ Watts (HI Speed)   | 69         |
| ■ RPM (HI-MED-LOW)   | 200-120-55 |
| ■ Shipping Wt. (lbs.)  | 14.99      |
| ■ CU. FT. in Carton  | 1.28       |
| ■ Airflow*<br><i>(Cubic Feet Per Minute)</i>                     | 5,941      |
| ■ Electricity Use*   | 69 Watts   |
| ■ Airflow Efficiency*<br><i>(Cubic Feet Per Minute Per Watt)</i> | 86         |

## Ceiling Drop Dimensions



- |                   |                  |
|-------------------|------------------|
| A: 2" DR - 9.75"  | B: 2" DR - 8.5"  |
| A: 4" DR - 11.25" | B: 4" DR - 10.0" |
| C: 11.0"          | D: 5.125"        |
| E: 3.0"           |                  |

DR: Downrod

"Compare: 36" to 48" ceiling fans have airflow efficiencies ranging from approximately 71 to 86 cubic feet per minute per watt at high speed."

"Compare: 49" to 60" ceiling fans have airflow efficiencies ranging from approximately 51 to 176 cubic feet per minute per watt at high speed."



## Popular Combinations



Aged Bronze Contractor's Design with 52" Contractor's Design Aged Bronze Blades

Model-Finish **CD52AG**  
Blade-Finish **BCD52-AG**  
Light-Finish **Not Shown**



White Contractor's Design with 52" Contractor's Design White Blades

Model-Finish **CD52W**  
Blade-Finish **BCD52-W**  
Light-Finish **Not Shown**



Flat Black Contractor's Design with 52" Contractor's Design Flat Black Blades

Model-Finish **CD52FB**  
Blade-Finish **BCD52-FB**  
Light-Finish **Not Shown**



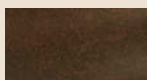
Antique Brass Contractor's Design with 52" Contractor's Design Light Oak Blades

Model-Finish **CD52AB**  
Blade-Finish **BCD52-LOK**  
Light-Finish **Not Shown**

### Available Finishes



**AB**  
Antique Brass



**AG**  
Aged Bronze



**AW**  
Antique White



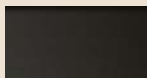
**BN**  
Brushed Nickel



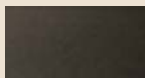
**BS**  
Brownstone†



**EB**  
European Bronze



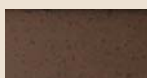
**FB**  
Flat Black



**OB**  
Oiled Bronze



**PB**  
Polished Brass



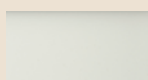
**RI**  
Rustic Iron



**SL**  
Saddle Leather



**TW**  
Textured White



**W**  
White

### Blade Options

Type 5 Blades  
(see page 200)



### Light Kit Options

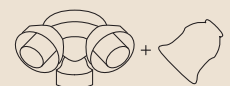
Bowl Light Kits  
(see page 204)



Complete Light Kits  
(see page 208)



Customize Your Own  
(see pages 209/211)



### Remotes



Universal Remote Control System  
(Optional)

UC-2000 Series  
(see page 223)

†Brownstone™ is a registered trademark of Dolan Designs