

# PFCSR60CP, PFCSRIKCP

## Curved Shower Rod



### Product Features

- Made of 22 gauge 304 stainless steel to prevent rusting
- Fits all standard shower curtains
- 1" diameter
- Flange kit included: hardware included for installation into sheetrock, tile, and wood
- Adds 6" additional elbow room

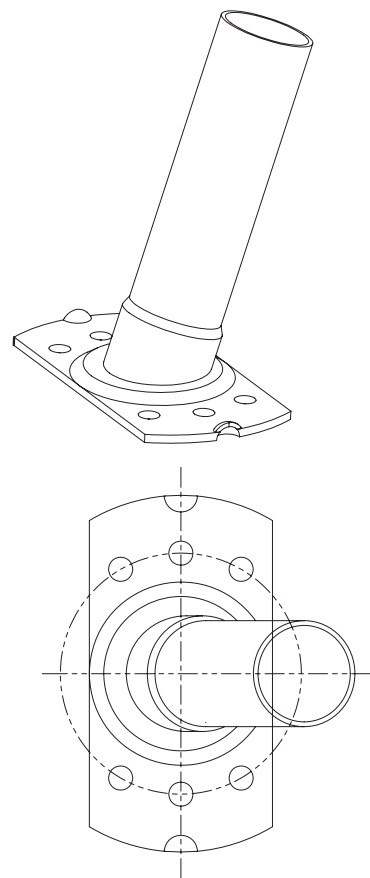
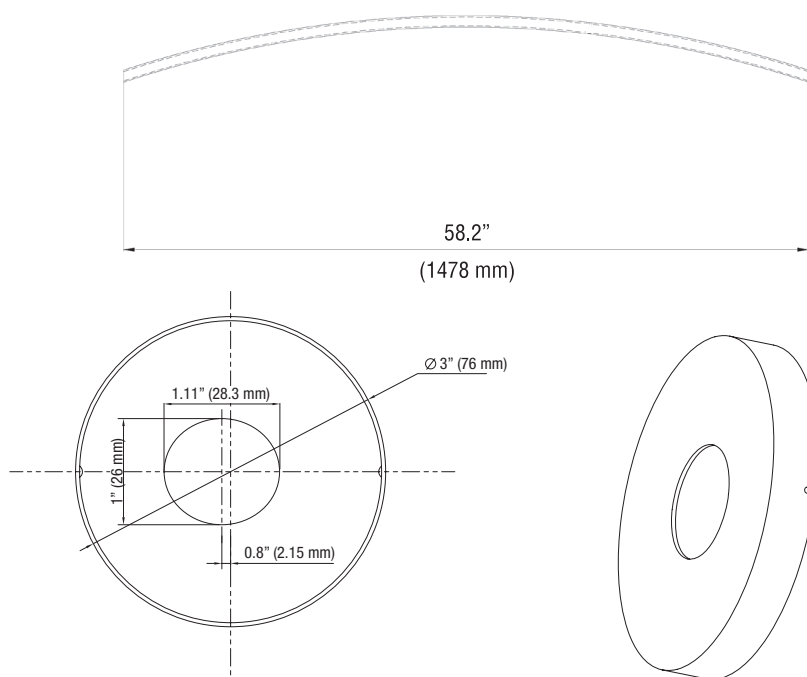


### Model Numbers

**PFCSR60CP** - chrome plated, fits 5 ft. opening  
**PFCSR60BN** - brushed nickel, fits 5 ft. opening

**PFCSRIKCP** - additional chrome plated flange kit is also available separately  
**PFCSRIKBN** - additional brushed nickel flange kit is also available separately

**PFCSR60CP, PFCSRIKCP**



### Warranty and Codes

This product comes complete with installation, operating, care and maintenance instructions. This PROFLO product carries a 1-year limited warranty. This product meets ANSI: A112.18.1M.

Distributed Exclusively by Ferguson and Wolseley Canada

**PFSCR60, PFC71F, PFSRFCP**

## **Straight Shower Rod**



### **Product Features**

- Made of aluminum alloy to prevent rusting
- Fits all standard shower curtains

### **Model Numbers**

**PFSCR60\*** 5' - Chrome

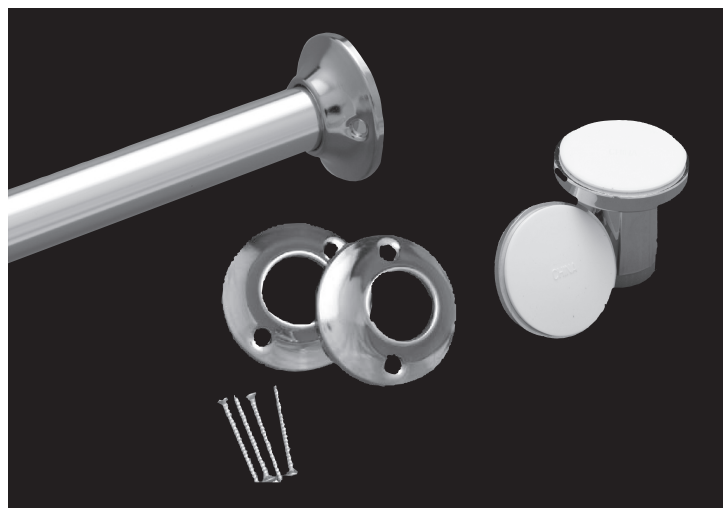
**PFSCR72\*** 6' - Chrome

\*Must be used with a kit below

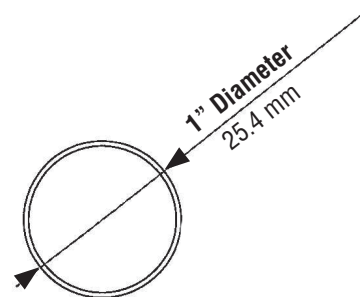
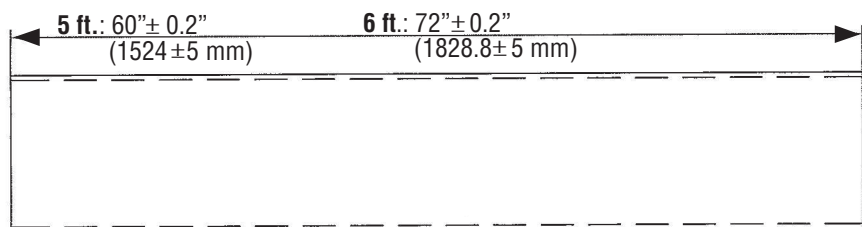
**PFSRFCP** Shower Rod Flange Kit

**PFC71F** Diecast Expandtite Rod Holder Kit

**PFC71FB** Plastic Expandtite Rod Holder Kit



**PFSCR60, PFC71F, PFSRFCP**



### **Warranty and Codes**

Refer to the instruction sheet in each package for complete installation instructions and illustrations. This product comes complete with installation, operating, care and maintenance instructions. This PROFLO product carries a 1-year limited warranty. This product meets ANSI: A112.18.1M.