



Alcott™
Apron Front Kitchen Sink
K-6573-5U

Features

- 27-inch apron sink minimum base cabinet width.
- Fireclay.
- Under-mount.
- Three oversized faucet holes with one oversized accessory hole to the right and one oversized accessory hole to the left.
- With integral apron.
- 25" (635 mm) x 22" (559 mm)

Recommended Accessories

K- 9000 P-Trap

Optional Accessories

K- 5984 Cutting Board

K- 6005 Sink Rack

K- 8801 Sink Strainer



Codes/Standards





ASME A112.19.2/CSA B45.1

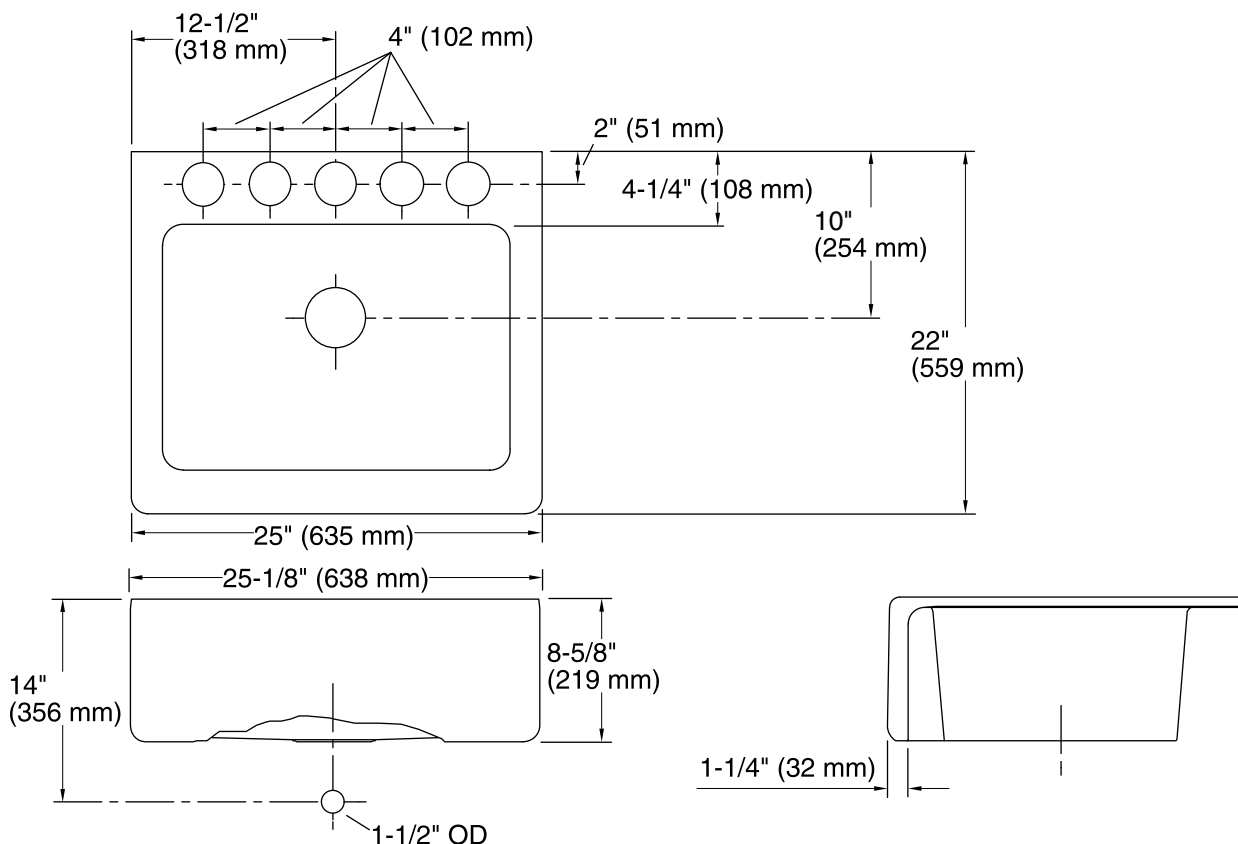
KOHLER® One-Year Limited Warranty

See website for detailed warranty information.

Available Color/Finishes

Color tiles intended for reference only.

Color	Code	Description
	0	White
	96	Biscuit
	47	Almond
	7	Black Black™



Technical Information

All product dimensions are nominal.

Bowl configuration: Single

Installation: Tile-in

Min. base cabinet width: 27" (686 mm)

Bowl area (Only)
Length: 21" (533 mm)
Width: 15" (381 mm)
Bowl depth: 8" (203 mm)
Water depth: 8" (203 mm)

Number of deck holes: 5

Faucet hole(s): 2-1/2" (64 mm)

Drain hole: 3-7/8" (98 mm)

Notes

Install this product according to the installation guide.

Due to the special nature of this installation, Kohler Co. recommends that an experienced cabinet maker use the actual sink to build the new cabinet or modify an existing cabinet.