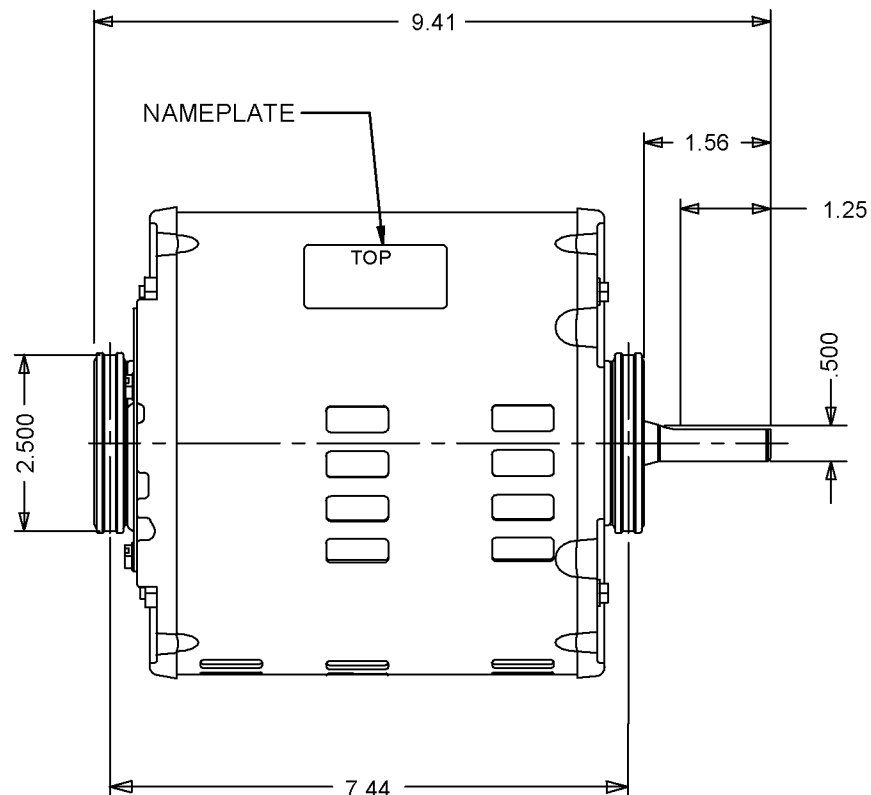
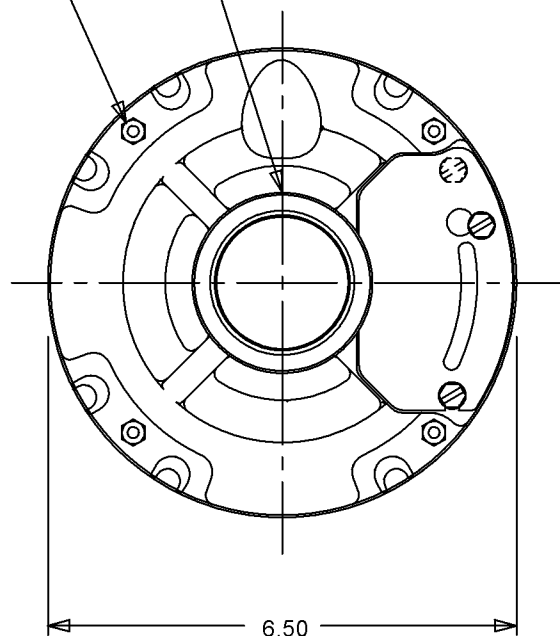



SEE NOTE #1.  
MANUFACTURING OPTION

OIL PLUG  
(BOTH ENDS)



NOTE:  
#1.) MANUFACTURING OPTION: MOTOR CONSTRUCTION  
MAY BE E-LOC OR STATOR SCREWS.

© EMERSON ELECTRIC CO. 4/22/2004

© EMERSON ELECTRIC CO. 4/22/2004								PROTECTOR	BEARING		
								AUTOMATIC	SLEEVE		
MODEL		REF.	CUSTOMER	HP.	VOLTS	AMPS	HZ.	R.P.M.	ROTATION	CUST. PT. NO.	
S63NXSSG-7128				3/4	115	10.5	60	1725	C.CW.LD END	EC6769	
PAGE 1 OF 1	REVISION RECORD FOR: ECO 222045				INFORMATION DISCLOSED ON THIS DOCUMENT IS CONSIDERED PROPRIETARY AND SHALL NOT BE REPRODUCED OR DISCLOSED WITHOUT WRIT- TEN CONSENT OF EMERSON ELECTRIC COMPANY.						
	REDRAWN FROM M1STATION TO SOLID EDGE.										
	NAMEPLATE RELOCATED.										
REVISION DATE											
4-22-04											
ISSUED BY	REVIEWED BY		ENGINEER APPROVED		ASSEMBLED VIEW				CODE	ITEM NO.	SIZE
J. VAZQUEZ	C. DOMINGUEZ		A. SERRANO						V01	256220	A