

**PFUE208**

# Stainless Steel Undermount Sinks



## Product Features

- Stainless steel double bowl sink
- Type 304 stainless steel
- Undermount
- 18 gauge
- Sound absorption pads and coating to minimize vibration and sound and increase durability
- Seamless design
- Clips and template included in box

## General Specifications

- Overall Size: 34-1/2" x 20-1/2"
- Bowl Size: 15-1/2" x 18-1/2"
- Bowl Depth: 8-1/2"
- Drain Diameter: 3-1/2"

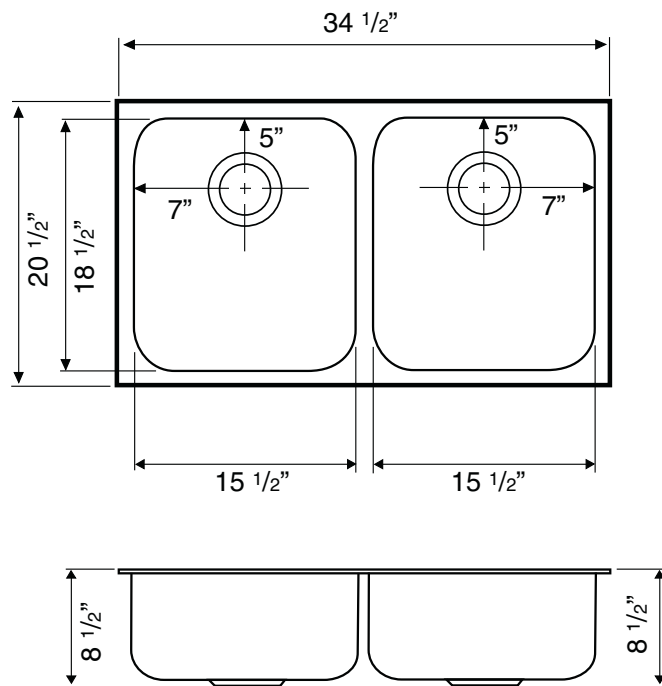


**PFUE208**

## Model Numbers

**PFUE208** 34-1/2" x 20-1/2" 2B UC SS SINK

## Product Specifications



## Warranty and Codes

This PROFLO stainless steel sink carries a limited lifetime warranty. In an effort to continually improve our products, we will make design changes from time to time. We reserve the right to ship newly designed product to fill any order unless it is agreed in writing to do otherwise.

These products meet or exceed ASME/ANSI A112.19.3m.

\* All measurements are nominal. Please verify before actual installation.

