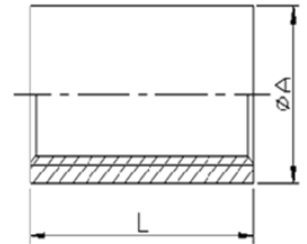


DIMENSIONAL SPECIFICATIONS

STAINLESS STEEL ISO PATTERN FITTINGS 150 LB.

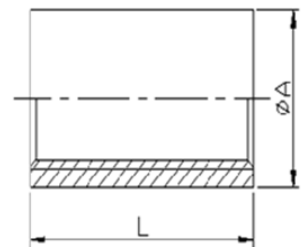
HEAVY PATTERN FULL COUPLING (304)

| Part # | Size (IN.) | Approx. Net WT. (LB.) | A | L |
|---------|------------|-----------------------|------|------|
| K411-02 | 1/8 | 0.06 | 0.62 | 1.01 |
| K411-04 | 1/4 | 0.10 | 0.78 | 1.10 |
| K411-06 | 3/8 | 0.12 | 0.89 | 1.19 |
| K411-08 | 1/2 | 0.18 | 1.11 | 1.38 |
| K411-12 | 3/4 | 0.32 | 1.37 | 1.59 |
| K411-16 | 1 | 0.49 | 1.65 | 1.72 |
| K411-20 | 1-1/4 | 0.53 | 1.93 | 1.97 |
| K411-24 | 1-1/2 | 0.87 | 2.24 | 2.23 |
| K411-32 | 2 | 1.53 | 2.80 | 2.56 |
| K411-40 | 2-1/2 | 2.65 | 3.40 | 2.91 |
| K411-48 | 3 | 4.41 | 4.16 | 3.23 |
| K411-64 | 4 | 6.39 | 5.07 | 3.72 |



HEAVY PATTERN FULL COUPLING (316)

| Part # | Size (IN.) | Approx. Net WT. (LB.) | A | L |
|---------|------------|-----------------------|------|------|
| K611-02 | 1/8 | 0.06 | 0.62 | 1.01 |
| K611-04 | 1/4 | 0.10 | 0.78 | 1.10 |
| K611-06 | 3/8 | 0.12 | 0.89 | 1.19 |
| K611-08 | 1/2 | 0.18 | 1.11 | 1.38 |
| K611-12 | 3/4 | 0.32 | 1.37 | 1.59 |
| K611-16 | 1 | 0.49 | 1.65 | 1.72 |
| K611-20 | 1-1/4 | 0.53 | 1.93 | 1.97 |
| K611-24 | 1-1/2 | 0.87 | 2.24 | 2.23 |
| K611-32 | 2 | 1.53 | 2.80 | 2.56 |
| K611-40 | 2-1/2 | 2.65 | 3.40 | 2.91 |
| K611-48 | 3 | 4.41 | 4.16 | 3.23 |
| K611-64 | 4 | 6.39 | 5.07 | 3.72 |



**MERIT
BRASS**

DIRECTING THE FLOW OF *Quality*