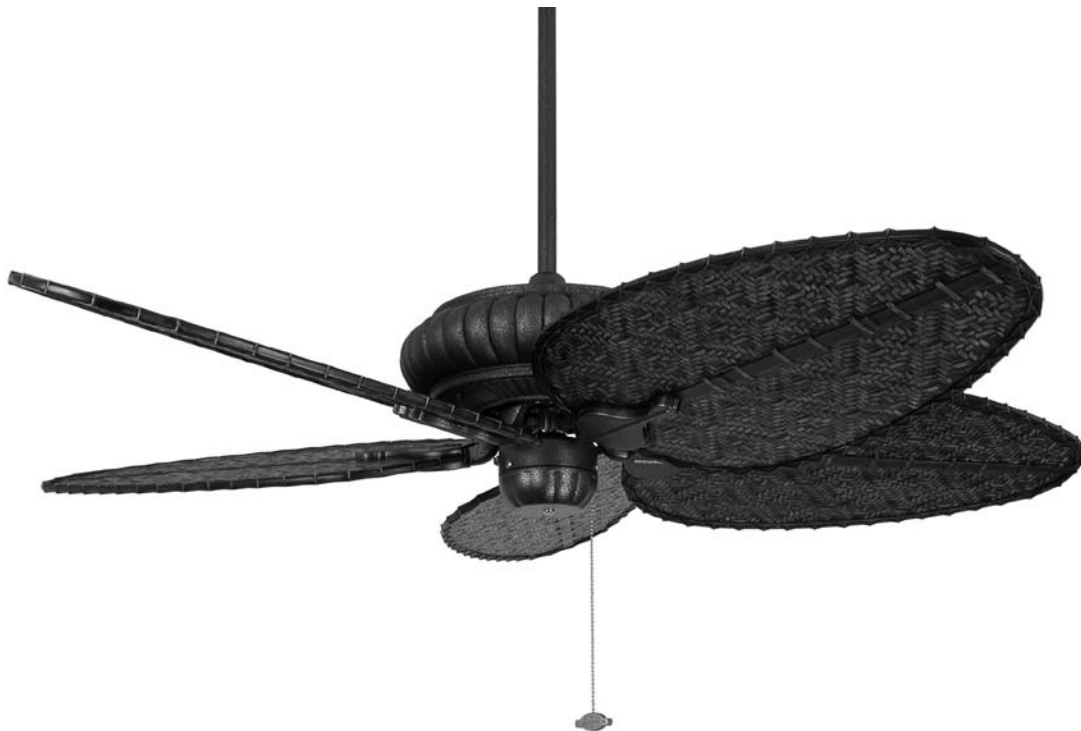


The Belleria®

FP4320 Series



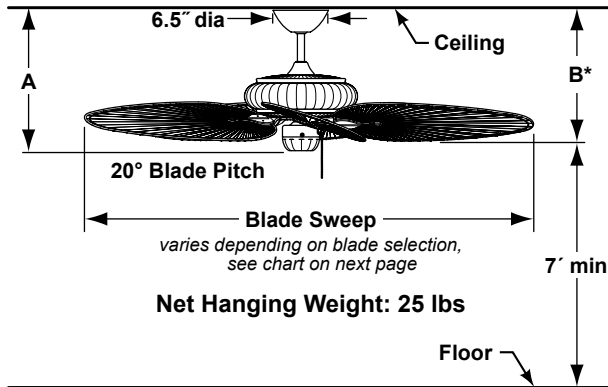
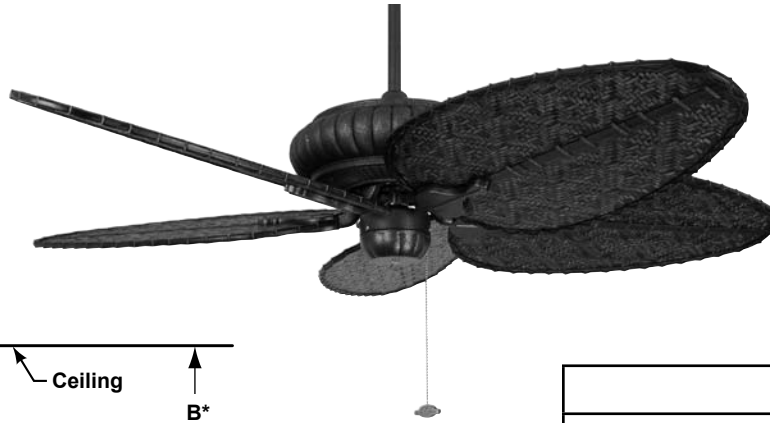
SPECIFICATION SHEET



Product Specifications subject to change

BELLERIA®

FP4320** Wet-Location Ceiling Fan



*Dimension when used with BPD4A blades. Ceiling to blade measurement will vary depending on blade.

Available Finishes

AZ	Aged bronze
LT	Latte
MW	Matte white
TB	Textured black
TS	Tortoise shell

	A	B*
Fan w/6" downrod	16.30"	15.00"
Fan w/12" downrod	22.30"	21.00"
Fan w/18" downrod	28.30"	27.00"
Fan w/24" downrod	34.30"	33.00"
Fan w/36" downrod	46.30"	45.00"
Fan w/48" downrod	58.30"	57.00"
Fan w/60" downrod	70.30"	69.00"
Fan w/72" downrod	82.30"	81.00"

INSTALLATION REQUIREMENTS:

Fan must be attached to a securely anchored electrical junction box capable of withstanding a load of at least 50 lbs.

ELECTRICAL REQUIREMENTS:

Requires a grounded electrical supply line of 120 volts AC, 60 Hz, 15 amp circuit.

MOTOR SPECS:

188 x 25 motor is designed for optimal performance with this fan. 220 VAC, 50 Hz export version available.

BLADES:

All-weather composite, palm, bamboo, and wood blade sets are available—sold separately. See our catalog or visit www.fanimation.com for all available blade options.

CONTROL OPTIONS (Dry Applications Only):

Optional C1 and C2 wall controls available—sold separately. Optional C4 remote control with canopy-style receiver unit available—sold separately. Instructions are provided with each control.

LIGHTING OPTIONS:

Optional lighting fitters and light kits are available. Lighting fitter FW423 is water-sealed and UL wet location approved. See our catalog or visit www.fanimation.com for available lighting options.

DOWNROD OPTIONS:

Fan comes with 1/2" dia. x 6" long wet-location downrod (DRW6). Optional wet-location downrods are available in 12", 18", 24", 36", 48", 60" and 72" lengths. Fan can be mounted on a sloped ceiling up to 30°. Most sloped ceiling installations require a downrod longer than the standard 6" downrod. Optional sloped ceiling ball kits (SCB52) are available for slope angles greater than 30° and up to 52°. Call technical support for more information.

LOCATION USE:

Rated for dry, damp and wet locations.

Airflow / Energy Efficiency Info (120V)

Fan Speed	Max RPM	CFM	CFM / Watts	Amps	Watts
High	163	5580	67	0.70	83
Med	104	3475	96	0.46	36
Low	70	2197	124	0.32	18

Available All-Weather Composite Blades

Palm leaf	BPP1	Natural - 22" wide oval
Palm leaf-brown	BPP1BR	Painted - 22" wide oval
Palm leaf	BPP4	Natural - 22" narrow oval
Palm leaf-brown	BPP4BR	Painted - 22" narrow oval
Palm leaf-green	BPP4GR	Painted - 22" narrow oval
Woven bamboo	BPD1A	Antique - 22" Wide oval
Woven bamboo	BPD4A	Antique - 22" narrow oval
Woven bamboo	BPD4MW	Matte white - 22" narrow oval
Woven bamboo	BPD5A	Antique - 18" narrow oval
Traditional wood	BPW10CY	Cherry - 20" narrow
Curved-edge wood	BPW20CY	Cherry - 20" narrow
Curved-edge wood	BPW20MH	Mahogany - 20" narrow
Curved-edge wood	BPW20TK	Teak - 20" narrow

BLADE SWEEP INFORMATION

Use the charts below to determine blade sweep.

5-Blade Fans		
Blade	Blade Length	Blade Sweep
<i>Palm Leaf (Dry Location Only)</i>		
ISP2, ISP5	18"	44"
ISP1, ISP4, ISP1RB, ISP4RB	22"	52"
<i>Woven Bamboo (Dry and Damp Locations Only)</i>		
ISD2A	18"	44"
ISD1A, ISD4A, ISD7A, ISD1C, ISD4C, ISD7C	22"	52"
<i>Wood (Dry Location Only)</i>		
B6030CY, B6030MH, B6030MP, B6030TK	30"	68"
B6000CY, B6000MH, B6000MP, B6000TK	36"	80"
<i>All-Weather Composite (Dry, Damp and Wet Location)</i>		
BPD5A	18"	44"
BPW20CY, BPW20MH, BPW20TK	20"	48"
BPW10CY	20.5"	49"
BPD1A, BPD4A, BPD4BL, BPD4MW, BPP1, BPP4, BPP1BR, BPD4BR, BPP4GR	22"	52"

4-Blade Fans		
Blade	Blade Length	Blade Sweep
<i>Wood (Dry Location Only)</i>		
B4010CP, B4020SS, B4040CP	22"	52"
B4000CA	26"	60"
B4060CP	36"	80"



celebrating 25 years

**10983 Bennett Parkway
Zionsville, IN 46077**

Toll Free (888) 567-2055

FAX (866) 482-5215

Outside U.S. call (317) 733-4113

Visit Our Website @ www.fanimation.com

*Copyright 2010 Fanimation, Inc.
All Rights Reserved*



2010/01