

Combi2®

Residential Atmospheric Vent Combi2® Gas Water Heater System



Photo is of
C-DW2-504T10FBN

FEATURING:



The Combi2® FVIR Defender Safety System® Model Features (C-DW2-504T10FBN model only):

- **Advanced ScreenLok® Technology Flame Arrestor Design**—Flame arrestor is designed to prevent ignition of flammable vapor outside of the water heater.
- **Resettable Thermal Switch**—Proven and reliable bimetallic switch prevents burner and pilot operation in case of ongoing flammable vapors burning inside of the combustion chamber or restricted air flow.
- **Maintenance Free**—Regular cleaning of air inlet openings or flame arrestor is not required under normal conditions.
- **Sight Window**—Offers a view into the combustion chamber to observe the operation of the pilot and burner.

All Combi2® Models Feature:

- **Bradford White ICON System®**—Intelligent gas control with proven millivolt powered technology and built-in piezo igniter. A standard, off-the-shelf thermopile converts heat energy from the pilot flame into electrical energy to operate the gas valve and microprocessor. No need for external electricity.
 - **Enhanced Performance**—Proprietary algorithms provide enhanced First Hour Rating and tighter temperature differential.
 - **Advanced Temperature Control System**—Microprocessor controls burner operation for consistent and accurate water temperature levels up to 180°F (82°C).
 - **Intelligent Diagnostics**—Exclusive multicolor LED light indicates operation status/service required.
- **Internal Double Wall Heat Exchanger**—Double wall 1½" (38mm) O.D. glass coated (Vitraglas®) steel coil ensures separation of potable water and heating fluid.
 - **¾" (19mm) NPT Front Supply and Return Connections.**
 - **Low Heat Exchanger Head Loss**—Up to 8 GPM (30 LPM) flow, with less than 6 ft. (1.8m) of head loss. Greatly reduces the required pump size for heat exchange.
- **Factory Installed Hydrojet® Total Performance System**—Sediment reducing device that also increases first hour rating of hot water while minimizing temperature build-up in tank.
- **Vitraglas® Lining with Microban®**—An exclusively engineered enamel formula that provides superior tank protection from the corrosive effects of water; and with Microban® antimicrobial product protection to help prevent the growth of bacteria, mold and mildew on the surface of the tank lining.
- **Insulation System**—2" (51mm) Non-CFC foam insulation covers the sides and top of the tank, reducing heat loss. This results in less energy consumption, improved efficiencies, and jacket rigidity.
- **Pedestal Base.**
- **Water Connections**—¾" (19mm) NPT factory installed true dielectric fittings.
- **Two Protective Anode Rods.**
- **T&P Relief Valve**—Installed.
- **Low Restrictive Brass Drain Valve**—Durable tamper proof design.
- **Thermostatic Mixing Valve (ASSE Approved)**—Included.

10-Year Limited Tank and Heat Exchanger Warranties / 6-Year Limited Warranty on Component Parts.

For more information on warranty, please visit www.bradfordwhite.com

For products installed in USA, Canada and Puerto Rico. Some states do not allow limitations on warranties. See complete copy of the warranty included with the heater.



Microban® antimicrobial product protection helps prevent the growth of bacteria, mold and mildew that may affect the product. The built-in antimicrobial properties do not protect users or others from disease-causing organisms. Microban® is a registered trademark of Microban Products Company.

MANUFACTURED UNDER ONE OR MORE OF THE FOLLOWING U.S. PATENTS: 5,682,666; 7,634,976; 5,660,165; 5,954,492; 6,056,542; 6,935,280; 5,372,185; 5,485,879; 5,574,822; 7,971,560; 7,992,526; 6,684,821; 6,442,178; 7,334,419; 7,866,168; 7,270,087; 7,007,748; 5,596,952; 6,142,216; 7,699,026; 5,341,770; 7,337,517; 7,665,211; 7,665,210; 7,063,132; 7,063,133; 7,559,293; 7,900,589; 5,943,984; 8,082,888; 5,988,117; 7,621,238; 7,650,859; 5,761,379; 7,409,925; 5,277,171; 8,146,772; 7,458,341; 2,262,174. OTHER U.S. AND FOREIGN PATENT APPLICATIONS PENDING. CURRENT CANADIAN PATENTS: 2,314,845; 2,504,824; 2,108,186; 2,143,031; 2,409,271; 2,548,958; 2,112,515; 2,476,685; 2,239,007; 2,092,105; 2,107,012. Combi2®, Defender Safety System®, Vitraglas®, Hydrojet® and ScreenLok® are registered trademarks of Bradford White® Corporation.

Residential Atmospheric Vent Combi2® Gas Water Heater System

Combi2® Models

NATURAL GAS AND LIQUID PROPANE GAS

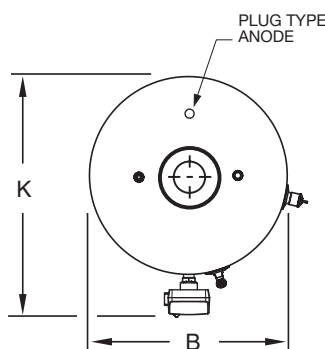
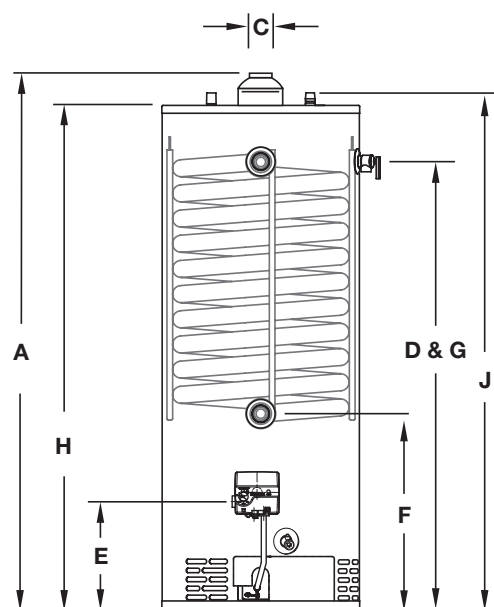
Meet or exceed ASHRAE 90.1b (current standard) C.E.C. Listed
80% Recovery Efficiency

Model Number	Capacity		Nat. BTU/Hr. Input	LP BTU/Hr. Input	Recovery 90°F Rise*				A Floor to Flue Conn.	B Jacket Dia.	C Vent Size	D Floor to T&P Conn.	E Floor to Gas Conn.	F Floor to Exchanger Inlet	G Floor to Exchanger Outlet	H Floor to Top of Heater	J Floor to Water Conn.	K Depth	Approx. Shipping Weight
	U.S. Gal.	Imp. Gal.			Nat. U.S. GPH	Nat. Imp. GPH	LP U.S. GPH	LP Imp. GPH	in.	in.	in.	in.	in.	in.	in.	in.	in.	in.	lbs.
C-DW2-504T10FBN	45	38	65,000	61,000	70	59	66	55	59 1/4	22	4	50	13	27 7/8	50	56 3/8	60 3/8	24 1/2	238
C-DW2-75T10BN	72	61	76,000	76,000	81	70	81	70	62 1/4	26	4	51 3/4	13 7/8	29 5/8	51 3/4	59	63	30 3/8	302

Model Number	Capacity		Nat. kW Input	LP kW Input	Recovery 50°C Rise*				A Floor to Flue Conn.	B Jacket Dia.	C Vent Size	D Floor to T&P Conn.	E Floor to Gas Conn.	F Floor to Exchanger Inlet	G Floor to Exchanger Outlet	H Floor to Top of Heater	J Floor to Water Conn.	K Depth	Approx. Shipping Weight
	Liters	Liters			Nat. Liters/Hour	Nat. Liters/Hour	LP Liters/Hour	LP Liters/Hour	mm.	mm.	mm.	mm.	mm.	mm.	mm.	mm.	mm.	mm.	kg.
C-DW2-504T10FBN	170	19.1	17.9	17.9	265	250	250	250	1505	559	102	1270	330	780	1270	1432	1534	622	108
C-DW2-75T10BN	272	22.3	22.3	22.3	317	317	317	317	1581	660	102	1314	352	752	1314	1499	1600	772	136

Propane model features a Titanium Stainless Steel propane burner. For Propane (LP) models change "BN" to "SX".

* Based on manufacturers rated recovery efficiency.



Heat Exchanger Head Loss		Heat Exchanger Head Loss	
GPM	Ft. of Hd. Loss	LPM	m of Hd. Loss
2	0.15	7.6	0.0457
5	0.94	18.9	0.2865
8	2.40	30.2	0.7315
10	3.75	37.9	1.1430
12	5.40	45.4	1.6459

Heat Exchanger Values*

Supply Temperature	140°F 60°C	120°F 49°C	100°F 38°C
Return Temperature	120°F 49°C	100°F 38°C	80°F 27°C
Differential	20°F 11°C	20°F 11°C	20°F 11°C
Flow Rate	2.3 GPM 8.7 LPM	3.4 GPM 12.9 LPM	4.4 GPM 16.7 LPM
Net Output	20,000 BTU/Hr. 5.9kW	29,000 BTU/Hr. 8.5kW	38,000 BTU/Hr. 11.1kW

* These values were obtained using 180°F stored tank temperature.

Net Output is the space heating capacity based on normal piping and pickup allowance of 15%.

Actual values may vary based on circulator flow rate, number of zones, water and space heating demands. Numbers subject to change.

General

Meets NAECA Requirements.

All gas water heaters are certified at 300 PSI test pressure (2068 kPa) and 150 PSI working pressure (1034 kPa). All potable water and heat exchanger connections are 3/4" NPT (19mm) on 11" (203mm) centers. All gas connections 1/2" (13mm). All models design certified by CSA International (formerly AGA/CGA), ANSI Z21.10.1 and peak performance rated.

Dimensions and specifications subject to change without notice in accordance with our policy of continuous product improvement.

Suitable for Water (Potable) Heating and Space Heating. Toxic chemicals, such as those used for boiler treatment, shall NEVER be introduced into the potable water side. The potable side of this unit may NEVER be connected to any existing heating system or component(s) previously used with a non-potable water heating appliance. The heat exchanger side of the unit may be used in space heating applications.

— BRADFORD WHITE IS —

**AMERICAN
STRONG**

Sales: 800-523-2931 ■ Fax 215-641-1612

24/7 Technical Support: 800-334-3393 ■ Email techserv@bradfordwhite.com

Products made by Bradford White are manufactured in the United States using the finest raw materials and components from around the world.

Built to be the Best®