

FIXTURE SUPPORTS

FIG. 0230, 0260 VERTICAL FITTINGS FOR SIPHON JET WATER CLOSETS - SHALLOW ROUGH-IN TYPE

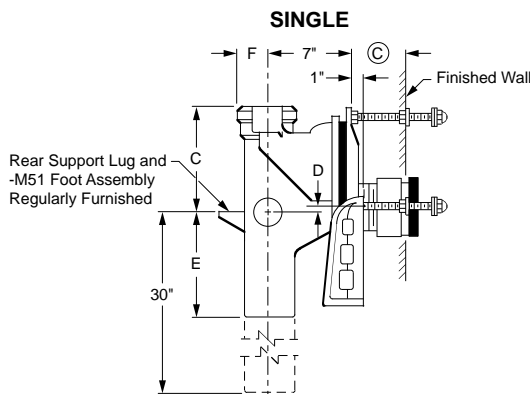
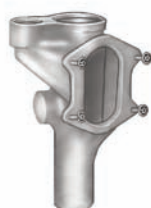


Fig. 0230
Side View

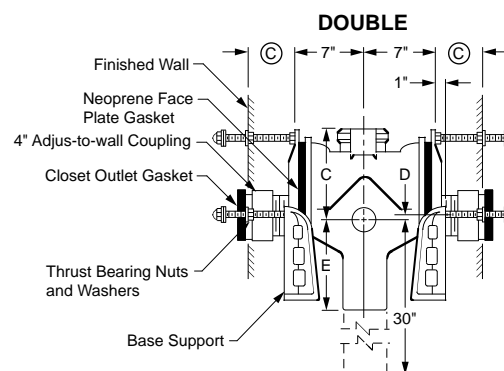


Fig. 0230D
Side View

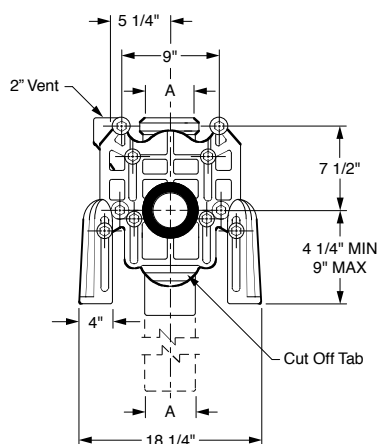


Fig. 0230
Front View

NOTE: Base support must be securely anchored to floor (with four 1/2" bolts provided by contractor).

NOTE: 1 1/2" or 2" NPT Inlet available. Add suffix -N.

© dimension = 4" (regularly furnished) consisting of nipple and Adjus-to-Wall coupling permitting adjustment from 3" min. to 4" max.

The water closet gasket regularly furnished is made of molded neoprene and designed to fit water closet outlet dimensions and configurations shown in ANSI Standard A112.19.2M, Figure 13B. If gasket is not found to be compatible to fixture due to nonconformance of said fixture to ANSI A112.19.2M, then fixture manufacturer shall be consulted for a suitable gasket recommendation. Jay R. Smith assumes no liability for connections to fixtures which do not conform to these standards.

OUTLET TYPE	FIGURE NO.	TYPE OF FITTING	A PIPE SIZE			C	D		E	F	APPROX. WT. LBS.
			†04"	05"	06"		MIN	MAX			
CAULK	0230	Single	1,085.00			9"	1 1/2"	4 1/4"	10"	3"	98
	0230D	Double	1,880.00			9"	1 1/2"	4 1/4"	10"	3"	135
	0230	Single		1,366.00		11 1/2"	1 1/2"	4 1/4"	11 1/2"	3 1/2"	98
	0230D	Double		2,173.00		11 1/2"	1 1/2"	4 1/4"	11 1/2"	3 1/2"	135
	0230	Single			1,604.00	11 1/2"	1 1/2"	4 1/4"	11 1/2"	4"	98
	0230D	Double			2,399.00	11 1/2"	1 1/2"	4 1/4"	11 1/2"	4"	135
			†04" X 04"	05" X 04" OR 05"	06" X 04"						
CAULK	0260	Single Long Barrel	1,630.00			9"	1 1/2"	4 1/4"	10"	3"	117
	0260D	Double Long Barrel	2,426.00			9"	1 1/2"	4 1/4"	10"	3"	154
	0260	Single Long Barrel		3,014.00		11 1/2"	1 1/2"	4 1/4"	11 1/2"	3 1/2"	117
	0260D	Double Long Barrel		3,819.00		11 1/2"	1 1/2"	4 1/4"	11 1/2"	3 1/2"	154
	0260	Single Long Barrel			3,541.00	11 1/2"	1 1/2"	4 1/4"	11 1/2"	4"	117
	0260D	Double Long Barrel			4,336.00	11 1/2"	1 1/2"	4 1/4"	11 1/2"	4"	154

NOTE: Service weight regularly furnished on fittings above.
NOTE: Always specify fixture manufacturer's model name and number.

†REGULARLY FURNISHED