

GAS FURNACES



RGLQ- SERIES

**Models with Input Rates from
50,000 to 150,000 BTU/HR
[15 to 44 kW]
(U.S. & Canadian Models)**



***SUPER QUIET 80™* (A.F.U.E.†) TWO STAGE DOWNFLOW GAS FURNACES**

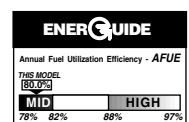
The Rheem *Classic® Plus Super Quiet 80™* 2-Stage line of downflow gas furnaces is designed for installation in closets, alcoves, utility rooms, or attics. The design is certified by CSA International.

Features

- Patented heat exchanger, constructed of both stainless and aluminized steel for the maximum in corrosion resistance.
- Low profile "34 inch" [864 mm] design is lighter and easier to handle, and leaves room for optional equipment.
- Left or right side gas and electric inlet connections with quick, simple change.
- Direct spark ignition.
- Integrated control board with humidifier and electronic air cleaner hookups.
- Insulated blower compartment, a two stage gas valve and a specially designed two speed draft inducer motor make it one of the quietest furnaces on the market today.
- Pre-paint galvanized steel cabinet.
- Grab-holes in doors to aid in easy door removal and replacement.
- Compatible with single or two-stage thermostat. (For optimal performance, two-stage thermostat recommended.)

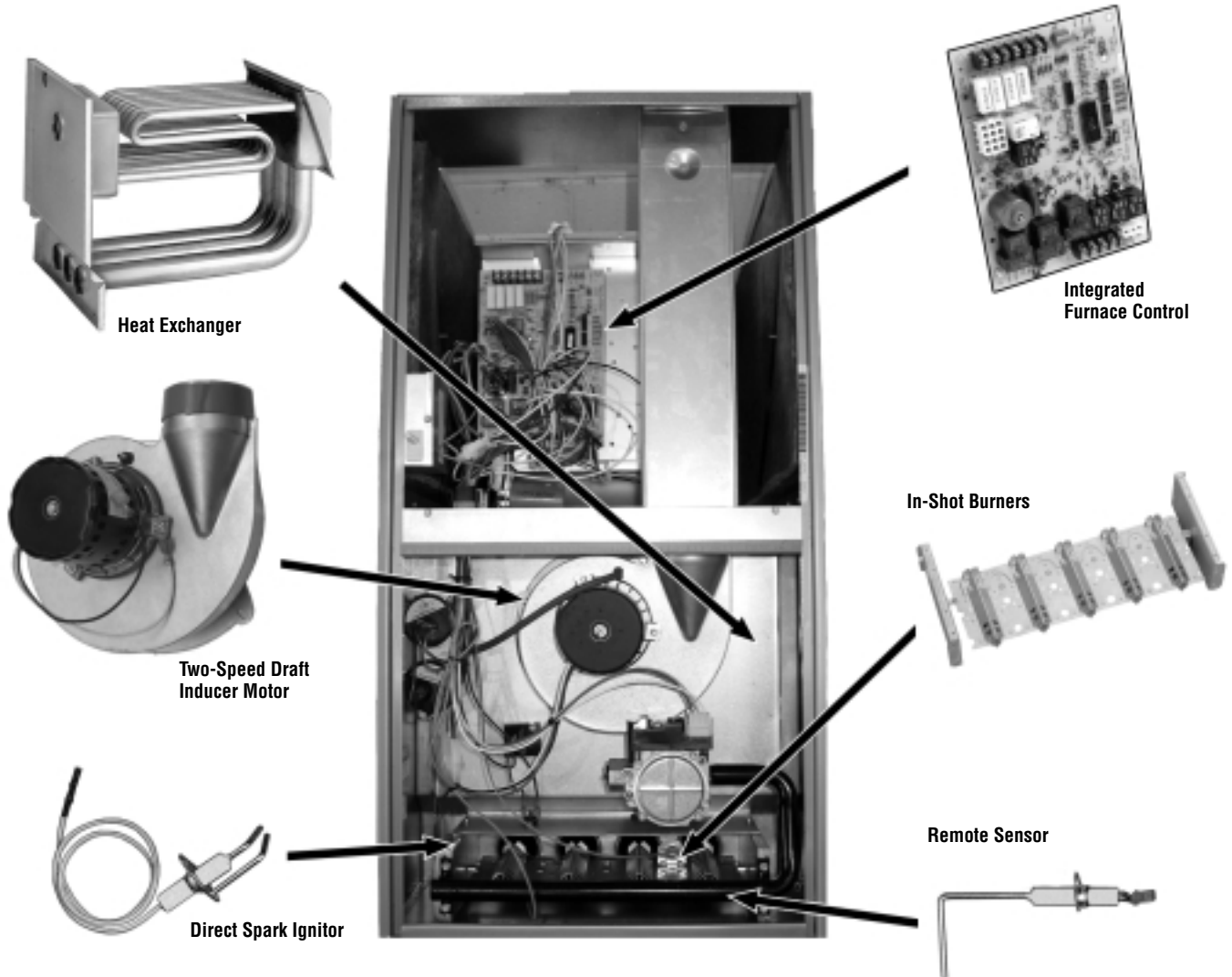
A variety of cooling coils and plenums designed to use with Rheem *Classic® Plus Super Quiet 80™* 2-Stage gas furnaces are available as optional accessories.

†A.F.U.E. (Annual Fuel Utilization Efficiency) calculated in accordance with Department of Energy test procedures.





CLASSIC® PLUS SUPER QUIET 80™ TWO STAGE DOWNFLOW GAS FURNACE



STANDARD EQUIPMENT

Completely assembled and wired; 2 speed induced draft blower; high and low pressure switches; 2 stage redundant main gas control; blower compartment door safety switch; solid state time on/time off blower control; limit control; transformer; direct drive multi-speed blower motor. Furnaces are equipped with cooling/heating relay and transformer (40VA) ready for air conditioning applications. (Please note: a thermostat is not included as standard equipment.) Flame sensor diagnostics; fused-protection (secondary).

NOTE: Furnace is not listed for use with fuels other than natural or L.P. (propane) gas.

The complete terms of limited and other warranties are available at our sales office, or through local installer.

All models can be converted by a qualified Rheem professional or local service dealer to use L.P. (propane) gas without changing burners. Factory approved kits must be used to convert from natural to L.P. (propane) gas and may be ordered as optional accessories.

For L.P. (propane) operation, refer to Conversion Kit Index Form.

NOTE: For natural and L.P. (propane) gas models, direct spark ignition is 100% lockout type.

WARNING
THIS FURNACE IS NOT APPROVED
OR RECOMMENDED
FOR USE IN MOBILE HOMES

PHYSICAL DATA AND SPECIFICATIONS U.S. AND CANADA MODELS (DOWNFLOW)

| MODEL NUMBERS RGLQ- SERIES | 05EAUER 05NAUER | 07EAMER 07NAMER | 10EAMER 10NAMER | 10EBRJR 10NBRJR | 12EARJR 12NARJR | 15EARJR 15NARJR |
|---|----------------------------|----------------------------|----------------------------|----------------------------|----------------------------|----------------------------|
| High Input—BTU—BTU/Hr [kW] ② | 50,000 [15] | 75,000 [22] | 100,000 [29] | 100,000 [29] | 125,000 [37] | 150,000 [44] |
| Heating Capacity—BTU/Hr [kW] ① | 40,360 [12] | 61,020 [18] | 81,600 [24] | 81,040 [24] | 101,750 [29] | 121,550 [35] |
| Low Input—BTU/Hr [kW] | 35,000 [10] | 52,500 [15] | 70,000 [20] | 70,000 [20] | 87,500 [25] | 105,000 [30] |
| Heating Capacity—BTU/Hr [kW] | 28,000 [8] | 41,600 [12] | 56,000 [16] | 56,000 [16] | 70,000 [20] | 84,000 [24] |
| Heating—Ext. Static Pressure [kPa] | .10 [.025] | .12 [.029] | .15 [.037] | .15 [.037] | .20 [.05] | .20 [.05] |
| Blower (D x W) [mm] | 11 x 6 [279 x 152] | 11 x 7 [279 x 178] | 11 x 7 [279 x 178] | 11 x 10 [279 x 254] | 11 x 10 [279 x 254] | 11 x 10 [279 x 254] |
| Motor H.P.—[W] Speeds—Type | 1/2 [373] 4-PSC | 1/2 [373] 4-PSC | 1/2 [373] 4-PSC | 3/4 [559] 4-PSC | 3/4 [559] 4-PSC | 3/4 [559] 4-PSC |
| Motor Full Load Amps | 6.8 | 7.1 | 7.1 | 9.5 | 9.5 | 9.5 |
| Heating Speed—High Fire | MED-LOW | MED-HIGH | MED-HIGH | MED-HIGH | MED-HIGH | MED-HIGH |
| Heating Speed—Low Fire | LOW | MED-LOW | LOW | LOW | LOW | LOW |
| Cooling Speed | HIGH | HIGH | HIGH | HIGH | HIGH | HIGH |
| Cooling CFM @ .5" [kPa] E.S.P. (Nominal) [L/s] | 1200 [566] | 1200 [566] | 1200 [566] | 2000 [944] | 2000 [944] | 2000 [944] |
| Max. E.S.P. (In. W.C.) [kPa] | 0.5 [.12] | 0.5 [.12] | 0.5 [.12] | 0.5 [.12] | 0.5 [.12] | 0.5 [.12] |
| Temperature Rise Range °F [°C] High Input | 25-55 [13.9-30.6] | 35-65 [19.4-36.1] | 45-75 [25.0-41.7] | 30-60 [16.7-33.3] | 35-65 [19.4-36.1] | 50-80 [27.8-44.4] |
| Temperature Rise Range °F [°C] Low Input | 20-50 [11.1-27.8] | 30-60 [16.7-33.0] | 20-50 [11.1-27.8] | 35-65 [19.4-36.1] | 25-55 [13.9-30.6] | 30-60 [16.7-33.3] |
| Max. Outlet Air Temp. °F [°C] | 155 [68.3] | 165 [78.3] | 180 [82.2] | 180 [82.2] | 180 [82.2] | 190 [87.7] |
| Standard Filter—In. [mm] | (1) 14 x 20 [356 x 508] | (2) 12 x 20 [306 x 508] | (2) 12 x 20 [306 x 508] | (2) 14 x 20 [356 x 508] | (2) 14 x 20 [356 x 508] | (2) 14 x 20 [356 x 508] |
| Approx. Shipping Weight (Lbs.) [kg] | 85 [39] | 105 [48] | 115 [52] | 120 [54] | 140 [63] | 150 [68] |
| AFUE ① | 80.0% | 80.0% | 80.0% | 80.0% | 80.0% | 80.0% |

NOTES: All models are 115V, 60HZ, 1Ø. Gas connection size for all models is 1/2" [12.7 mm] N.P.T.

① In accordance with D.O.E. test procedures.

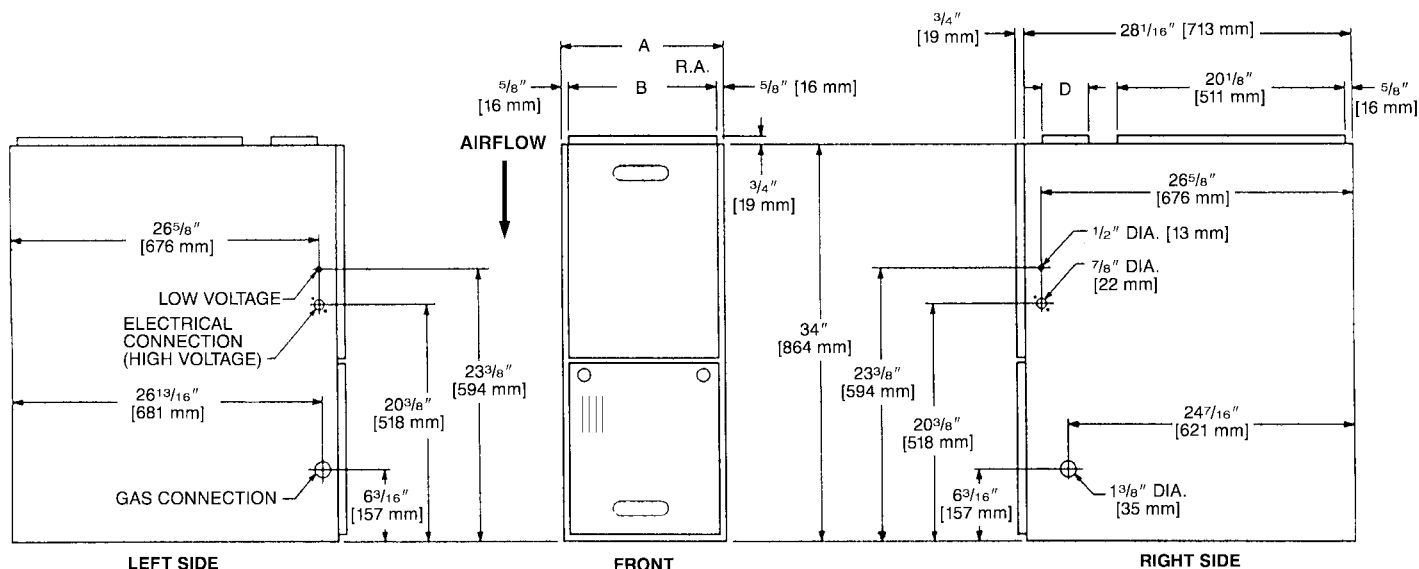
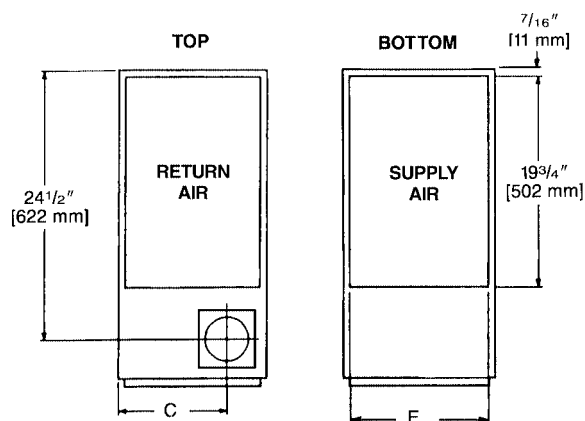
② See Conversion Kit Index for high altitude derate in U.S. applications. For Canadian applications, reference the furnace installation instructions.

MODEL IDENTIFICATION—DOWNFLOW MODELS

| R | G | L | Q | — | 07E | A | M | E | R |
|-------|----------------|----------|------------------|---|---|--|--|--|--|
| Rheem | Gas Furnace | Downflow | Design Series | | Heating Input Designation | Variations A = Std. Cabinet B = Wide Cabinet | Blower Designation U = 11 x 6 [279 x 152 mm] M = 11 x 7 [279 x 178 mm] R = 11 x 10 [279 x 254 mm] | Heating & Cooling Designation E = 1100-1330 CFM [519-628 L/s] J = 1800-2075 CFM [850-979 L/s] | Fuel Type R = Natural Gas, U.S. and Canadian Standard Furnace |
| | | | | | Electric Ignition 05E 07E 10E 12E 15E | Electric Ignition— NO _x Models 05N 07N 10N 12N 15N | Input BTU/HR 50,000 [15 kW] 75,000 [22 kW] 100,000 [29 kW] 125,000 [37 kW] 150,000 [44 kW] | | |

[] Designates Metric Conversions

DOWNFLOW DIMENSIONS



DIMENSIONS AND CLEARANCE TO COMBUSTIBLE MATERIAL (INCHES) [mm]

| MODEL RGLQ- | A | B | C | D | E | REDUCED CLEARANCES (IN.) [mm] | | | | | | |
|----------------|--------------------------------------|--|--------------------------------------|---|--------------------------------------|-------------------------------|---------------|------|--------|--------|-----------|----------------------------|
| | | | | | | LEFT SIDE | RIGHT SIDE | BACK | TOP | FRONT | VENT | SHIP. WGTs. (LBS.) [kg] |
| 05 | 14 [356] | 12 ²⁷ / ₃₂ [326] | 10 ³ / ₈ [264] | ① | 13 ¹ / ₈ [333] | 0 | 4 [102] ② | 0 | 1 [25] | 3 [76] | 6 [152] ③ | 85 [38.6] |
| 07 | 17 ¹ / ₂ [445] | 16 ¹¹ / ₃₂ [415] | 12 ¹ / ₈ [308] | ① | 16 ⁵ / ₈ [422] | 0 | 3 [76] ② | 0 | 1 [25] | 3 [76] | 6 [152] ③ | 105 [47.6] |
| 10 (A) | 17 ¹ / ₂ [445] | 16 ¹¹ / ₃₂ [415] | 12 ¹ / ₈ [308] | ① | 16 ⁵ / ₈ [422] | 0 | 3 [76] ② | 0 | 1 [25] | 3 [76] | 6 [152] ③ | 115 [52.2] |
| 10 (B) | 21 [533] | 19 ²⁷ / ₃₂ [504] | 13 ⁷ / ₈ [352] | ① | 20 ¹ / ₈ [511] | 0 | 0 | 0 | 1 [25] | 3 [76] | 6 [152] ③ | 120 [54.4] |
| 12 | 24 ¹ / ₂ [622] | 23 ¹¹ / ₃₂ [593] | 15 ⁵ / ₈ [397] | ① | 23 ⁵ / ₈ [600] | 0 | 0 | 0 | 1 [25] | 3 [76] | 6 [152] ③ | 140 [63.5] |
| 15 | 24 ¹ / ₂ [622] | 23 ¹¹ / ₃₂ [593] | 15 ⁵ / ₈ [397] | ① | 23 ⁵ / ₈ [600] | 0 | 0 | 0 | 1 [25] | 3 [76] | 6 [152] ③ | 150 [68] |

NOTES: ① May require a 3" [76 mm] to 4" [102 mm] or 3" [76 mm] to 5" [127 mm] adapter.

② May be 0" [0 mm] with type B vent.

③ May be 1" [25 mm] with type B vent.

Furnaces must be vented in accordance with the National Fuel Gas Code, ANSI Z223.1 and/or Can/CGA-B149 Installation Codes and in accordance with local codes.

[] Designates Metric Conversions

BLOWER PERFORMANCE DATA—DOWNFLOW MODELS

| MODEL NUMBER RGLQ- SERIES | BLOWER SIZE [mm] | MOTOR H.P. [W] | BLOWER SPEED | CFM [L/s] AIR DELIVERY EXTERNAL STATIC PRESSURE INCHES [kPa] WATER COLUMN | | | | | | |
|------------------------------------|------------------------|----------------------|-----------------|--|-------------|-------------|-------------|-------------|------------|------------|
| | | | | .1 [.02] | .2 [.05] | .3 [.07] | .4 [.10] | .5 [.12] | .6 [.15] | .7 [.17] |
| 05*AUER | 11 x 6 [279 x 152] | 1/2 [373] | LOW | 655 [309] | 630 [297] | 600 [283] | 565 [266] | 532 [251] | 500 [236] | 467 [220] |
| | | | MED-LO | 975 [460] | 943 [445] | 915 [432] | 886 [418] | 852 [402] | 813 [383] | 770 [363] |
| | | | MED-HI | 180 [557] | 1140 [538] | 1105 [521] | 1067 [503] | 1027 [484] | 980 [462] | 924 [436] |
| | | | HIGH | 1335 [630] | 1290 [608] | 1250 [590] | 1202 [567] | 1157 [546] | 1110 [524] | 1060 [500] |
| 07*AMER | 11 x 7 [279 x 178] | 1/2 [373] | LOW ① | 910 [429] | 887 [418] | 863 [407] | 839 [396] | 814 [384] | 776 [366] | 738 [348] |
| | | | MED-LO | 1074 [507] | 1054 [497] | 1034 [488] | 1007 [475] | 979 [462] | 944 [455] | 908 [428] |
| | | | MED-HI | 1229 [580] | 1207 [569] | 1184 [558] | 1159 [547] | 1134 [535] | 1099 [518] | 1063 [501] |
| | | | HIGH | 1409 [665] | 1385 [653] | 1361 [642] | 1329 [627] | 1297 [612] | 1260 [594] | 1223 [577] |
| 10*AMER | 11 x 7 [279 x 178] | 1/2 [373] | LOW | 895 [422] | 874 [412] | 852 [402] | 825 [389] | 798 [376] | 766 [362] | 734 [346] |
| | | | MED-LO | 1052 [496] | 1033 [487] | 1013 [478] | 991 [467] | 968 [457] | 930 [439] | 891 [420] |
| | | | MED-HI | 1238 [584] | 1217 [574] | 1196 [564] | 1169 [551] | 1143 [539] | 1094 [516] | 1044 [492] |
| | | | HIGH | 1383 [652] | 1366 [644] | 1348 [636] | 1317 [621] | 1286 [607] | 1245 [587] | 1203 [567] |
| 10*BRJR | 11 x 10 [279 x 254] | 3/4 [559] | LOW | 1374 [648] | 1356 [640] | 1339 [632] | 1323 [624] | 1286 [607] | 1249 [589] | 1212 [572] |
| | | | MED-LO | 1709 [806] | 1686 [795] | 1663 [784] | 1635 [771] | 1607 [758] | 1562 [737] | 1516 [715] |
| | | | MED-HI | 2132 [1006] | 2085 [984] | 2038 [961] | 1988 [938] | 1937 [914] | 1882 [888] | 1827 [862] |
| | | | HIGH | 2362 [1114] | 2300 [1085] | 2237 [1055] | 2173 [1025] | 2108 [994] | 2036 [960] | 1964 [926] |
| 12*ARJR | 11 x 10 [279 x 254] | 3/4 [559] | LOW | 1315 [620] | 1292 [609] | 1269 [599] | 1250 [590] | 1231 [581] | 1194 [563] | 1157 [546] |
| | | | MED-LO | 1618 [763] | 1597 [753] | 1576 [743] | 1552 [732] | 1528 [721] | 1486 [701] | 1443 [681] |
| | | | MED-HI | 2065 [974] | 2025 [956] | 1984 [936] | 1938 [915] | 1891 [892] | 1824 [861] | 1756 [829] |
| | | | HIGH | 2275 [1074] | 2219 [1047] | 2163 [1021] | 2103 [992] | 2042 [964] | 1982 [935] | 1921 [907] |
| 15*ARJR | 11 x 10 [279 x 254] | 3/4 [559] | LOW | 1300 [614] | 1280 [604] | 1230 [580] | 1205 [569] | 1170 [552] | 1115 [526] | 1030 [486] |
| | | | MED-LO | 1675 [791] | 1650 [779] | 1620 [765] | 1570 [741] | 1545 [729] | 1485 [701] | 1425 [673] |
| | | | MED-HI | 2105 [993] | 2075 [979] | 2035 [960] | 1990 [939] | 1955 [923] | 1900 [897] | 1815 [857] |
| | | | HIGH | — | 2340 [1104] | 2290 [1081] | 2215 [1045] | 2145 [1012] | 2080 [982] | 1995 [942] |

NOTES: ① Not to be used as a low stage heating speed.
 Data compiled with factory filters installed.
 See Form Number C11-211 for "N" Coil Data.
 Factory rated to 0.5" W.C.
 *E = Standard
 N = NOx Models

[] Designates Metric Conversions

GENERAL TERMS OF LIMITED WARRANTY

Rheem will furnish a replacement for any part of this product which fails in normal use and service within the applicable period stated, in accordance with the terms of the limited warranty.

Gas Heat Exchanger Limited WarrantyLimited Lifetime
 Conditional Parts* (Registration Required)Ten (10) Years

*For Complete Details of the Limited Warranty, Including Applicable Terms and Conditions, See Your Local Installer or Contact the Manufacturer for a Copy.

ACCESSORIES—DOWNFLOW

DOWNFLOW WARNING: Unit design is certified for installation on non-combustible floor. A special factory supplied combustible floor sub-base is required when installing on a combustible floor. Failure to install the sub-base may result in fire, property damage and personal injury.

RXPf-F01 and F02

FOSSIL FUEL KIT—is for use with Rheem Heat Pumps and Classic Series warm air furnaces. RXPf-F02 meets TVA requirements.

COMBUSTIBLE FLOOR BASE DIMENSIONS

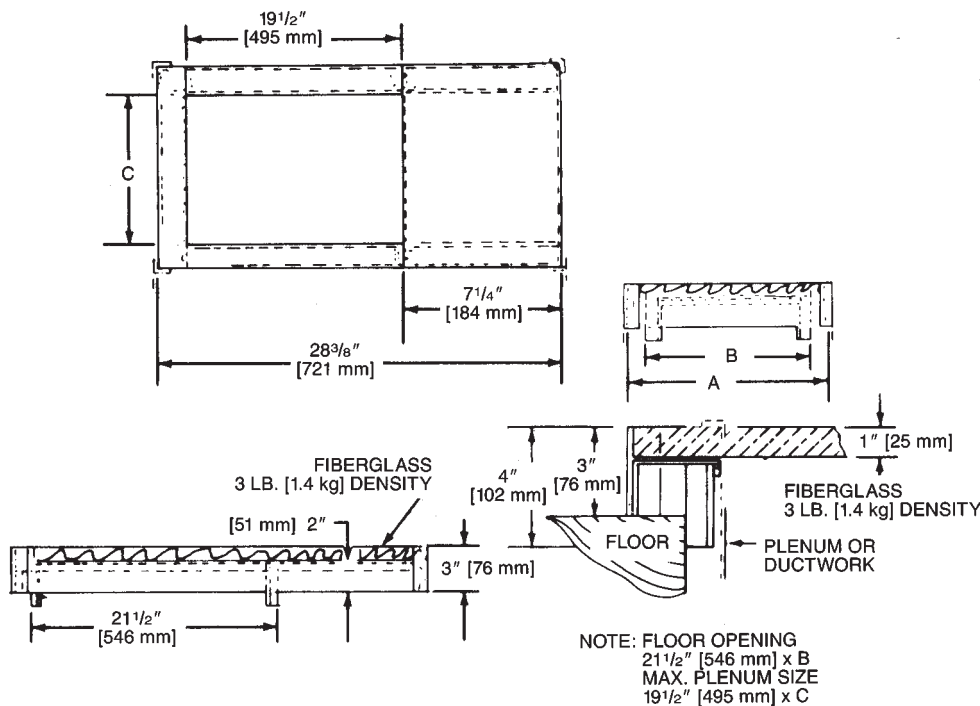
| COMBUSTIBLE FLOOR BASE | USE WITH FURNACE SIZES | A IN. [mm] | B IN. [mm] | C IN. [mm] |
|------------------------|------------------------|------------|------------|------------|
| RXGC-B14 | RGLQ-05 | 14½ [368] | 13¼ [337] | 11¼ [286] |
| RXGC-B17 | RGLQ-07, RGLQ-10(-)A | 18 [457] | 16¾ [425] | 14¾ [451] |
| RXGC-B21 | RGLQ-10(-)B | 21½ [546] | 20¼ [514] | 18¼ [464] |
| RXGC-B24 | RGLQ-12, RGLQ-15 | 25 [635] | 23¾ [603] | 21¾ [552] |

FOR HIGH ALTITUDES:

HIGH ALTITUDE CONVERSION:

See Installation Instructions for more high altitude information.

CAUTION: Always follow National Fuel Gas Code (NFGC) guidelines when converting furnaces for high altitudes.



RXGF-CC*

FILTER RACK—Downflow top return mount.

NOTE: Filter racks are shipped without filters.

*Filters available through PROSTOCK®.

| DOWNFLOW FILTER SIZES | | | |
|------------------------|--------------------------------------|---------------------|----------|
| FURNACE WIDTH IN. [mm] | INPUT BTUH [kW] | SIZE IN. [mm] | QUANTITY |
| 14 [356] | 45 [13.19] & 50 [14.65] | 14 [356] x 20 [508] | 1 |
| 17½ [445] | 67 [19.64], 75 [21.98] & 100 [29.31] | 12 [305] x 20 [508] | 1 |
| 21 [533] | 100 [29.31] | 12 [305] x 20 [508] | 2 |
| 24½ [622] | 125 [36.63] & 150 [44.0] | 14 [356] x 20 [508] | 2 |

[] Designates Metric Conversions

NOTES

Before proceeding with installation, refer to installation instructions packaged with each model, as well as complying with all Federal, State, Provincial, and Local codes, regulations, and practices.

**Rheem Heating,
Cooling and
Water Heating**

P.O. Box 17010, Fort Smith, AR 72917



"In keeping with its policy of continuous progress and product improvement, Rheem reserves the right to make changes without notice."