

Features

- Catalyzed polyurethane provides a durable moisture-resistant finish.
- Double doors with adjustable hinges.
- Adjustable shelf.
- Express™ vanities are easy to transport and set up in minutes.
- Includes cabinet hardware.

Material

- Birch solids and paintable substrate.



Codes/Standards

CARB P2


KOHLER® One-Year Limited Warranty

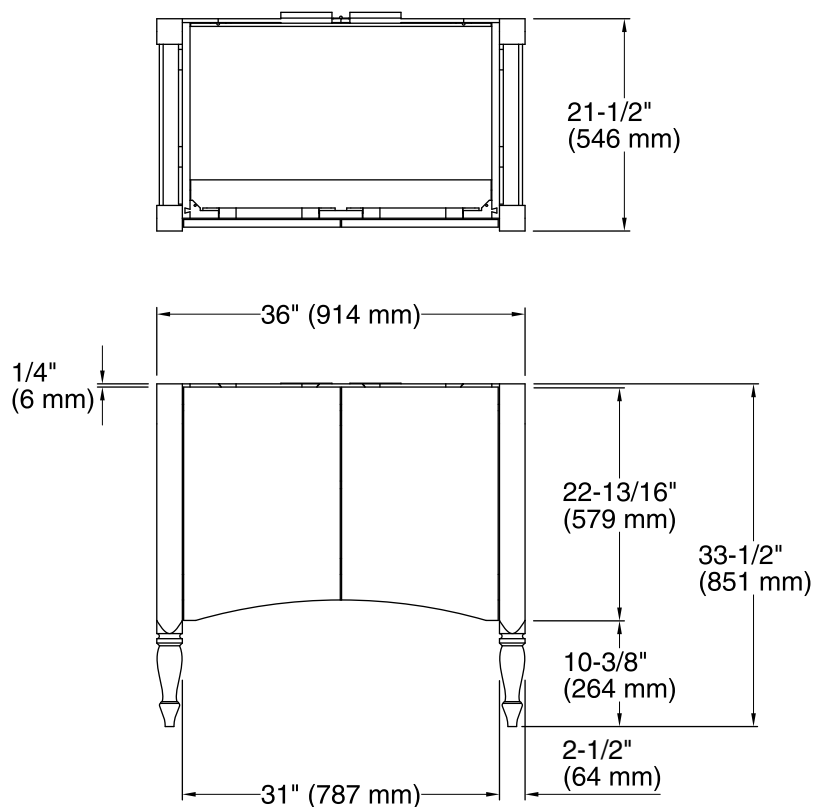
See website for detailed warranty information.

Available Color/Finishes

Color tiles intended for reference only.

Color	Code	Description
-------	------	-------------

	F40	Cinder
--------------------------------------------------------------------------------------	-----	--------



Technical Information

All product dimensions are nominal.

Notes

Install this product according to the installation guide.