

SPECIFICATION DATA

Catalog #	Date	Type
Project	Prepared by	
Comments		

QUICKTRONIC® T12HO Rapid Start Electronic Fluorescent Ballasts Universal Voltage (120-277V)

Item Number	OSRAM SYLVANIA Description	Input Current (AMPS) @120/277V	Lamp ¹ Type	Rated ² Lumens (lm)	No. of Lamps	Ballast Factor (BF)	System Lumens	Input Power (W) @120/277V	System Efficacy (lm/W) @120/277V	BEF ³
50319	QTP2x96T12HO/UNV	1.65/0.71	F96T12HO	9050	2	0.85	15,385	196	78	0.43
		1.38/0.60	F96T12HO/SS	8000	2	0.90	14,400	164	88	0.55
		1.30/0.56	F72T12HO	6250	2	0.90	11,250	154	73	0.58
		1.10/0.47	F60T12HO	5200	2	0.90	9360	132	71	0.68
		0.88/0.38	F48T12HO	4050	2	0.90	7290	104	70	0.87
		0.88/0.38	F96T12HO	9050	1	0.92	8325	104	80	0.88

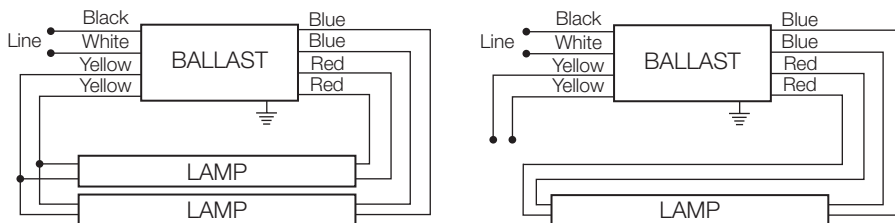
1: Also compatible with other manufacturer's equivalent lamp types that meet ANSI standards.

⊗ New Product.

2: 96T12HO rated lamp lumens and performance data based on F96T12CW/HO/SS and F96T12/D41/HO series lamps.

3: Ballast Efficiency Factor (BEF) shown = (Ballast Factor x 100) divided by Input Power (Note: calculation based on lowest wattage value).

50319 replaces discontinued item numbers 49883 QT2x96/120 HO and 49884 QT 2x96/277HO



Note: For one lamp application, individually cap each yellow lead. Insulate to 600 volts.

QUICKTRONIC 2x96T12HO

Dimensions:

Overall: 11.8" L x 2.15" W x 1.61" H

Mounting: 11.0"

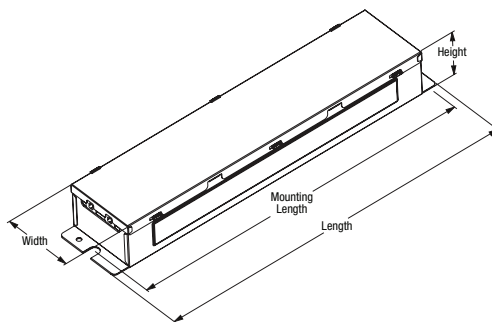
Packaging:

Quantity: 6 pieces

Weight: 2.77 lbs ea. (1260 grams)

Wiring:

Leads



Item Number _____ 50319 QTP 2 x 96T12 / HO / UNV _____ Line Voltage (120-277V)
 QUICKTRONIC _____ System Type
 Number of Lamps _____ Primary Lamp Type

Normal Ballast Factor

96 T12HO UNV

Professional Series

Performance Guide



Specifications

Data based on F96T12HO

Starting Method: Rapid Start

Circuit Type: Series

Starting Temp:⁴ -20°F (-29°C)

for F96T12HO; 60°F (16°C) for

SUPERSAVER F96T12HO/SS

Lamp CCF: Less than 1.7

Lamp Frequency: >20kHz

Low THD: <10%

Voltage Range: ±10% of Rated Input

Input Frequency: 50/60 Hz

Power Factor: >98%

cUL Listed Class P, Type 1 Outdoor

75°C Max Case Temperature

FCC 47CFR Part 18 Non-Consumer

ANSI C62.41 Cat A. Transient Protection

Remote Mounting: Contact OSI for remote mounting options.

Class A Sound Rating

4 Operation below 50°F (10°C) may affect light output or lamp operation – see "Low Temp. Starting" definition.

System Life / Warranty

QUICKTRONIC products are covered by the QUICK 60+® warranty, a comprehensive warranty. For additional details, refer to the QUICK 60+ warranty bulletin.

OSRAM SYLVANIA
National Customer
Service and Sales Center
 1-800-LIGHTBULB
 (1-800-544-4828)
www.sylvania.com

Specifications subject to change without notice.

SPECIFICATION DATA

Catalog #	Date	Type
Project	Prepared by	
Comments		

QUICKTRONIC® T12 Electronic Fluorescent Ballasts 40T12RS & 96T12IS Universal Voltage (120-277V)

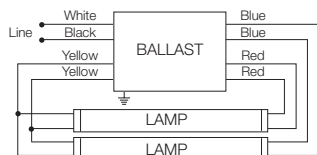
Item Number	OSRAM SYLVANIA Description	Input Current (AMPS) @120/277V	Lamp ¹ Type	Rated Lumens (lm)	No. of Lamps	Ballast Factor (BF)	System Lumens	Input Power (W) @120/277V	System Efficacy ² (lm/W) @120/277V	BEF ¹
50314	QTP2x40T12/UNV/RS/SC	0.62/0.27	F40T12/D30/ECO	3200	2	0.88	5630	74/74	76	1.19
		0.53/0.23	F34/D830/SS	2900	2	0.85	4930	63/63	78	1.35
50308	QTP2x96T12/UNV/IS	1.12/0.50	F96T12/D41/ECO	6420	2	0.86	11,040	134/130	82/85	0.66
		0.91/0.40	F96T12/CW/SS	5300	2	0.87	9220	108/106	85/87	0.82
		0.88/0.40	F72T12/CW	4500	2	0.92	8280	105/103	79/80	0.89
		0.62/0.28	F48T12/CW	2820	2	0.92	5190	73/71	71/73	1.30
		0.52/0.24	F48T12/SS/CW	2450	2	0.92	4510	62/61	73/74	1.51
		0.69/0.31	F96T12/D41/ECO	6420	1	1.01	6485	82/81	79/80	1.25
		0.56/0.27	F96T12/CW/SS	5300	1	1.10	5830	67/66	87/88	1.67
		0.55/0.26	F72T12/CW	4500	1	1.07	4815	65/64	74/75	1.67

New 50308 QTP2x96T12/UNV/IS model replaces 50318 that is discontinued.

Also compatible with other manufacturer's equivalent lamp types that meet ANSI standards.

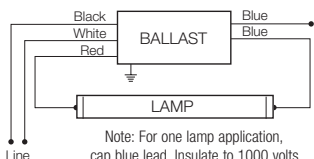
1: Ballast Efficiency Factor (BEF) shown = (Ballast Factor x 100) divided by Input Power (Note: calculation based on lowest wattage value).

2: System Efficacy calculation based on lowest input power value unless otherwise noted.



Ground Ballast and mount lamps within 1/2" of grounded metal reflector

QTP 2x40T12 RS



Note: For one lamp application, cap blue lead. Insulate to 1000 volts.

Ground Ballast and mount lamps within 1/2" of grounded metal reflector

QTP 2x96T12 IS

Dimensions:

Model QTP2x40T12/UNV/RS/SC enclosure size

Overall: 9.5" L x 1.38" W x 1.18" H

Mounting: 8.9"

Weight: 1.25 lbs ea. (approx.)

Dimensions:

Model QTP2x96T12/UNV/IS enclosure size

Overall: 11.75" L x 2.15" W x 1.61" H

Mounting: 11"

Weight: 4.67 lbs ea. (approx.)

Item Number 50314 QTP 2 x 40T12 / UNV / RS SC Case Size
 QUICKTRONIC PROFESSIONAL Starting Type / Ballast Factor
 Number of Lamps (2) Line Voltage (120-277V)
 Primary Lamp Wattage

Normal Ballast Factor

T12 UNV

Professional Series

Performance Guide



T12 SYSTEMS

Specifications

Data based on F40T12 for RS, F96T12 for IS

Starting Method:

- RS - Rapid Start
- IS - Instant Start

Circuit Type: RS - Parallel;

IS - Parallel;

Starting Temp: 0°F (-18°C)

SUPERSAVER® Lamps: 60°F(16°C)

Input Frequency: 60 Hz

THD: QTP40T12/UNV RS: <10%;

QTP2x96T12 IS: <15%

Power Factor: QTP40T12/UNV RS: >97%

QTP2x96T12 IS >0.96 (for F96T12);

>0.91(for other lamps)

Input Voltage: ±10% of Rated Input

Lamp Crest Factor: <1.8

Lamp Frequency: >20kHz

UL Listed Class P, Type 1 Outdoor

CSA or CUL Certified

70°C Max. Case Temp.

FCC 47CFR Part 18 Non-Consumer

Class A Sound Rating

ANSI C62.41 Cat A. Transient Protection

System Life / Warranty

QUICKTRONIC products are covered by the QUICK 60+® warranty. For additional details, refer to the QUICK 60+ warranty bulletin.

OSRAM SYLVANIA
National Customer
Service and Sales Center
 1-800-LIGHTBULB
 (1-800-544-4828)
www.sylvania.com

Specifications subject to change without notice.