

Soaking Tubs & Whirlpools



G 6042 TO CD

60"L x 41.625"D x 25.25"H

Deep oval bowled tub with wainscot trim and center drain. Available with an optional front access panel skirt.

Also available as whirlpool system.

609

G 6042 TO CD

60" x 41.625 x 25.25

WEIGHT: 115

LOAD FACTOR: 0.55

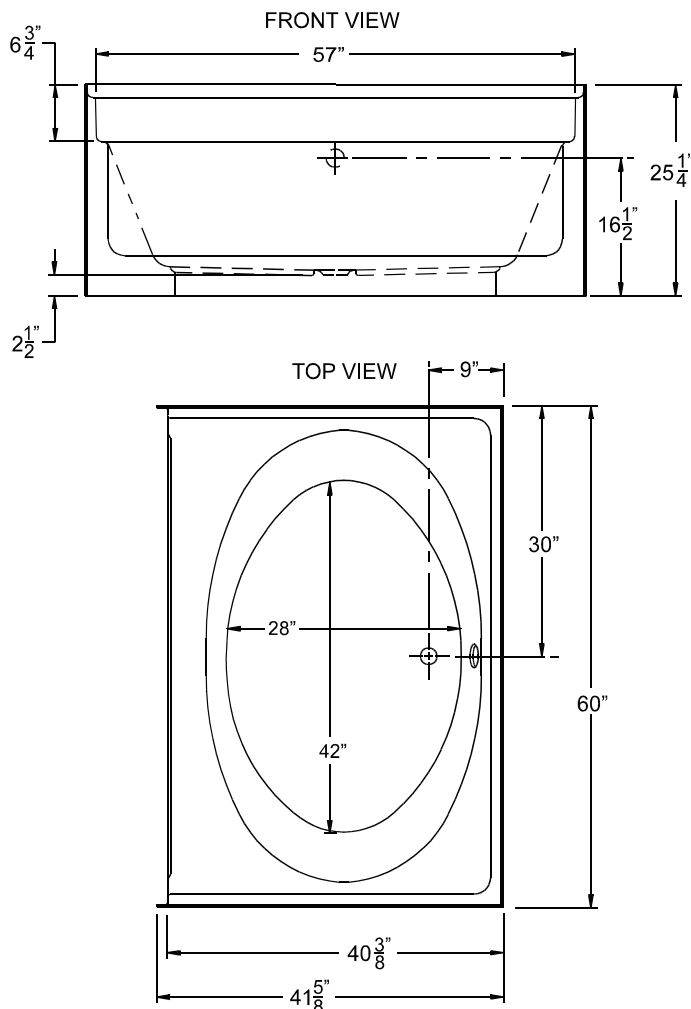
HANDED BY: CENTER DRAIN

AVAILABILITY:

STD-Northeast

NA-Mid-America

NA-South



Special Notes: This unit complies with ANSI 124.1 and shall meet the requirements for Uniform Plumbing Code administered by NAHB and CSA.
 Warranty: Gelcoat models have a 3 year limited warranty. Acrylic models have a 5 year limited warranty. Pumps, parts, and accessories 1 year limited warranty.
 For further details please refer to the complete warranty section. Due to the nature of the materials, dimensions may vary +/- 1/2".

