



# Residential Gas Water Heaters

## ENERGY SAVER MANUFACTURED HOUSING STANDARD VENT AND DIRECT VENT MODELS

### COMPLIES WITH HUD STANDARDS FOR MANUFACTURED HOUSING INSTALLATION

- Meets the Federal Energy Efficiency Standards effective January 20, 2004, according to the National Appliance Energy Conservation Act (NAECA) of 1992.

### FLAMMABLE VAPOR IGNITION RESISTANT (FVIR) COMPLIANT

### GAS CONTROL CONVERTIBLE FOR NATURAL AND PROPANE GAS

- For flexibility to meet the varying needs of Manufactured Housing installations.

### SIDE-MOUNTED 3/4" COLD WATER INLET

- For ease of installation when cold water supply originates below the structure.  
Top mounted 3/4" hot water outlet.

### DIRECT VENT MODELS PACKAGED WITH BOTTOM INTAKE AIR VENT

- To draw all combustion make-up air from outside the structure.

### OPTIONAL DUCTED AIR INLET KIT FOR DIRECT VENT MODELS

- For use when water heater is installed over a basement. Provision for horizontal air inlet ducting. See instruction manual for approved venting distance by model.

### GREEN CHOICE® ECO-FRIENDLY GAS BURNER

- Patented design reduces NOx emissions by up to 33% and complies with less than 40 ng/j requirements for low NOx emissions.

### GLASSLINED TANK

- For long-lasting protection against corrosion.

### ANODE ROD

- Helps protect against corrosion and maximizes tank life.

### CSA CERTIFIED AND ASME RATED T&P RELIEF VALVE

### MAXIMUM HYDROSTATIC WORKING PRESSURE 150 PSI

### DESIGN-CERTIFIED BY CSA INTERNATIONAL

### 6-YEAR LIMITED TANK AND 2-YEAR LIMITED PARTS WARRANTY

- For complete information, consult written warranty.



**FMV Model Shown**





# Residential Gas Water Heaters

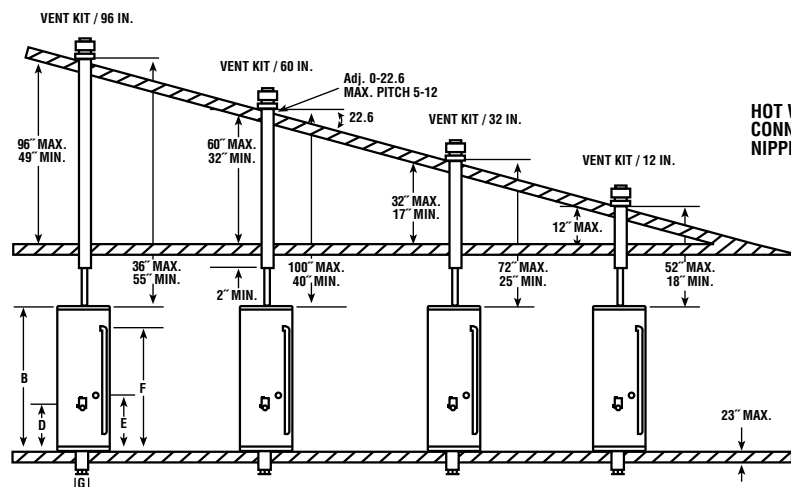
MODEL NUMBER	SERIES	FIRST HOUR RATING GALLONS	ENERGY FACTOR	GAL. CAP.	BTU INPUT PER HOUR NATURAL/PROPANE	RECOVERY 90° RISE GALLONS PER HOUR	INSULATION (INCHES)	DIMENSIONS IN INCHES							APPROX. SHIPPING WEIGHT (LBS.)
								A	B	C	D	E	F	DRAFT HOOD OUTLET	
STANDARD ATMOSPHERIC VENT MODELS - See Figure 2															
FMV-30	302	55	0.61	30	35,500/32,000	36	2"	61-1/2	58	18	13	14-1/4	52	3 or 4	129
FMV-40	302	62	0.59	40	35,500/32,000	36	2"	61-3/4	58-1/4	20	13	14-1/4	51-3/4	3 or 4	153
DIRECT VENT MODELS - See Figure 1															
FMD-30	300	49	0.61	30	30,000/29,000	31	2"	—	58	18	13	14-1/4	52	3	129
FMD-40	300	61	0.60	40	32,000/29,000	33	2"	—	58-3/4	20	13	14-1/4	51-3/4	3	153
FMD-50	300	77	0.59	50	40,000/37,000	39	2"	—	57-1/4	22	13	14-1/4	50-1/4	3	168

All models ship from factory for use with natural gas, a complete LP (propane) burner is supplied for converting to propane gas.

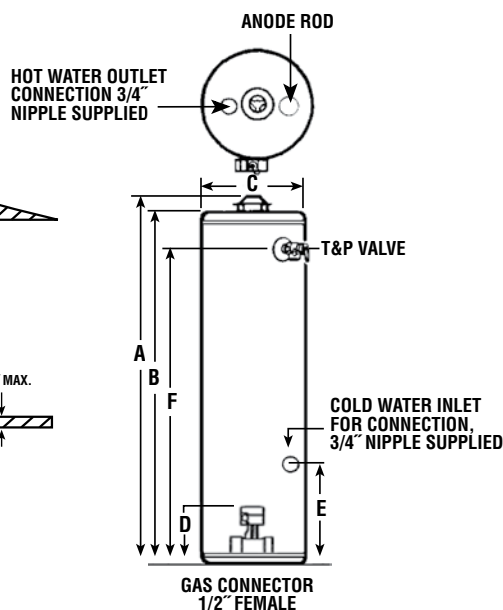
## Approved Roof Jack Kits for Direct Vent Models

Direct Vent Manufacture Housing water heaters must be installed using one of these approve Roof Jack Kits, which must be ordered separately. "Min." and "Max" dimensions indicate kit adjustability for varying vent distance, as shown in drawing.

KIT NUMBER	MIN.	MAX.	SHIP. WEIGHT
9002964005	—	12"	10
9002965005	17"	32"	13
9002966005	32"	60"	27
9002967005	49"	96"	22



Direct Vent Models  
Figure 1



Standard Vent Models  
Figure 2

For Technical Information and Automated Fax Service, call 800-527-1953. A. O. Smith Corporation reserves the right to make product changes or improvements without prior notice.