



8 Degree™
Under-mount Kitchen Sink
K-3672

Features

- 36-inch minimum base cabinet width.
- 16-gauge stainless steel.
- Under-mount.
- Double (unequal) bowl.
- With SilentShield® sound-absorption technology.
- 33" (787 mm) x 18" (419 mm)

Optional Accessories

K- 3140 Cutting Board
K- 8801 Sink Strainer

Components

Product includes:

K- 6135 Sink Rack
K- 6136 Sink Rack
91915 Hardware Kit
K- 6133 Wine Glass Rack

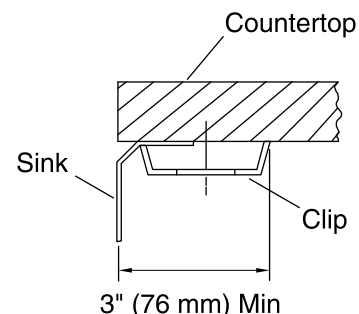
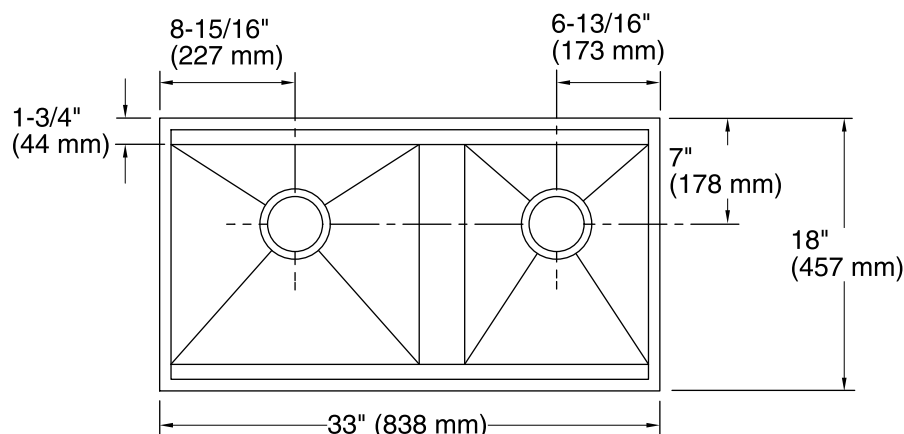


Codes/Standards

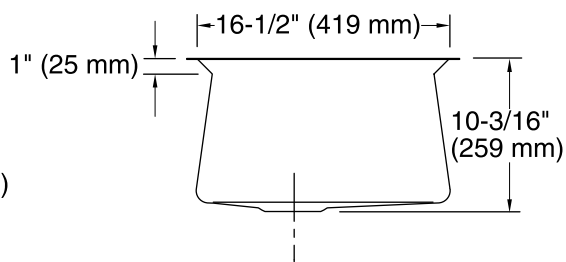
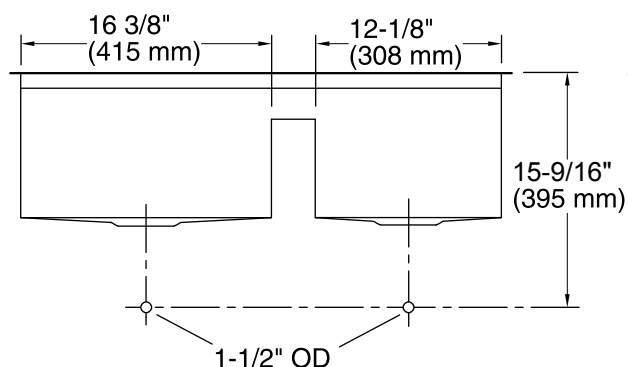
ASME A112.19.3/CSA B45.4

**Lifetime Limited Warranty for
KOHLER® Stainless Steel Sinks**

See website for detailed warranty information.



* Allow clearance around sink rim for clip attachment.



Technical Information

All product dimensions are nominal.

Bowl configuration: Large/medium

Installation: Under-mount

Min. base cabinet width: 36" (914 mm)

Bowl area (Left)
Length: 16-3/8" (416 mm)
Width: 16-1/2" (419 mm)
Bowl depth: 9-3/4" (248 mm)
Water depth: 9-3/4" (248 mm)

Bowl area (Right)
Length: 12-1/8" (308 mm)
Width: 16-1/2" (419 mm)
Bowl depth: 9-3/4" (248 mm)
Water depth: 9-3/4" (248 mm)

Drain hole: 3-5/8" (92 mm)

Template: Under-mount, 1093327-7, required, included

Notes

Install this product according to the installation guide.

Allow a minimum of 3" (76 mm) clearance on the back rim for clip attachment.