



# model MTGFR.DF2

## Mounting Frame

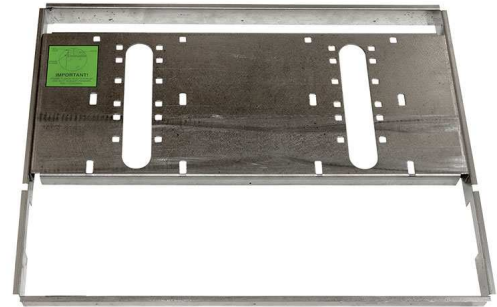
### FEATURES & BENEFITS

#### MOUNTING

Galvanized frame and 10 gauge surface plate provide the maximum mounting strength for the 'Hi-Lo' MS style Haws drinking fountains.

#### OPTIONS

For more information, visit [www.hawesco.com](http://www.hawesco.com) or call (888) 640-4297.



### SPECIFICATIONS

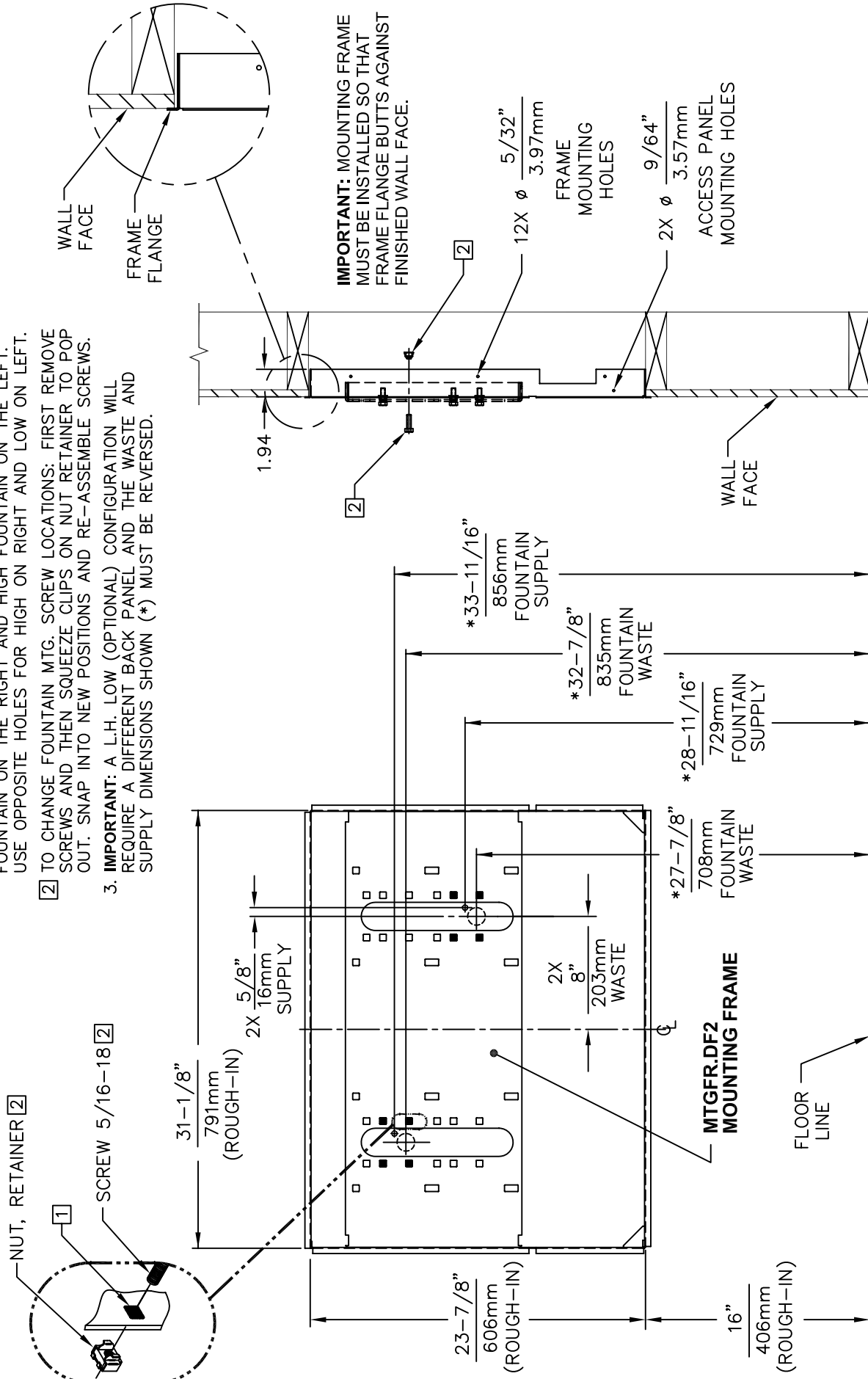
Model MTGFR.DF2 "Hi-Lo" mounting frame is made of heavy gauge galvanized steel with pre-punched mounting holes for use with Haws 1011 series fountains and is used to provide access to the in-wall traps.

### APPLICATIONS

Haws produces mounting plates and frames to assist in the installation process as well as to provide solid bases for the wall mounted designed fountains. Mounting plates and frames meet the requirements solely for the specified applicable fountains and are not designed to be used in the installation of any unspecified fountain.

## NOTES:

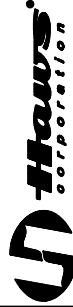
- 1 HOLE COMBINATION SHOWN BELOW IS FOR USE WITH LOW FOUNTAIN ON THE RIGHT AND HIGH FOUNTAIN ON THE LEFT. USE OPPOSITE HOLES FOR HIGH ON RIGHT AND LOW ON LEFT.
- 2 TO CHANGE FOUNTAIN MTG. SCREW LOCATIONS: FIRST REMOVE SCREWS AND THEN SQUEEZE CLIPS ON NUT RETAINER TO POP OUT. SNAP INTO NEW POSITIONS AND RE-ASSEMBLE SCREWS.
3. **IMPORTANT:** A L.H. LOW (OPTIONAL) CONFIGURATION WILL REQUIRE A DIFFERENT BACK PANEL AND THE WASTE AND SUPPLY DIMENSIONS SHOWN (\*) MUST BE REVERSED.



4. HOLD ROUGH-IN DIMENSIONS  $\pm 1/8"$  (3.2mm).

5. WHEN INSTALLING THIS UNIT, LOCAL, STATE OR FEDERAL CODES SHOULD BE ADHERED TO. FOR INSTALLATION HEIGHTS OTHER THAN SHOWN, DIMENSIONS MARKED (\*) MUST BE ADJUSTED ACCORDINGLY.

**FOR USE WITH MODELS:  
1011MS & 1011HPSMS**



INFO FAX : 1-888-FAX-HAWS (1-888-329-4297)

1455 Kleppe Ln, Sparks NV, 89431

1433 Krieppe Ln., Sparks NV, 89431  
Phone: 775-359-4712 Fax: 775-359-7424

Haws Ag Bachweg 3 CH-3401 Burgdorf Switzerland

**Haws Mfg Pte Ltd** 74 Sungei Kadut Loop Singapore 729531  
e-mail: [Haws@hawsco.com](mailto:Haws@hawsco.com) website: [www.hawsco.com](http://www.hawsco.com)

EOR NO.	REVISED PER EONL 4173	BY: LHM	MODEL(S): MOUNTING FRAME
---------	--------------------------	------------	--------------------------

MTGFR.DF2	CHK'D.:	HM
DATE:	08	10/07
DRAWN:	41/3	
ECON:		

RTM	08/97	DATE:
APPROVED:		DATE:

APPROVED:	DATE:	INFO FAX DOC #:	DRAWING TYPE:	INSTALLATION/FABRICATION
		26843/32	1:10	