



D510044T

D510044T

SPECIFICATIONS

SIRIUS™ TRIM ONLY SINGLE HANDLE PRESSURE BALANCE TUB & SHOWER FAUCET

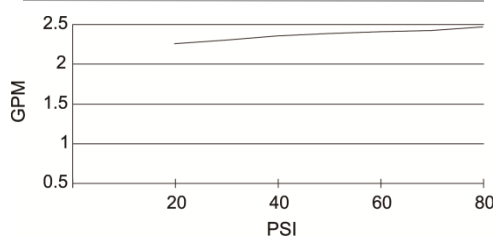
Model

D510044T (Tub & Shower trim)
D510044LST (Tub & Shower trim, less showerhead)
D500444T (Valve with diverter only trim)

Description

- 5" X 8" showerhead D460060
- 2.5gpm (9.5L/min) maximum flow rate @ 80 psi
- 15" brass showerarm
- Metal lever handle
- Diverter on valve
- Use with valve: D113000BT / D113010BT (w/ diverter & stops)

Flow Rate



Standards



- UPC/Cupc
- Energy Policy Act of 1992

MEETS ASME
A112.18.1M/ A112.18.1

- ASME A112.18.1M/ A112.18.1



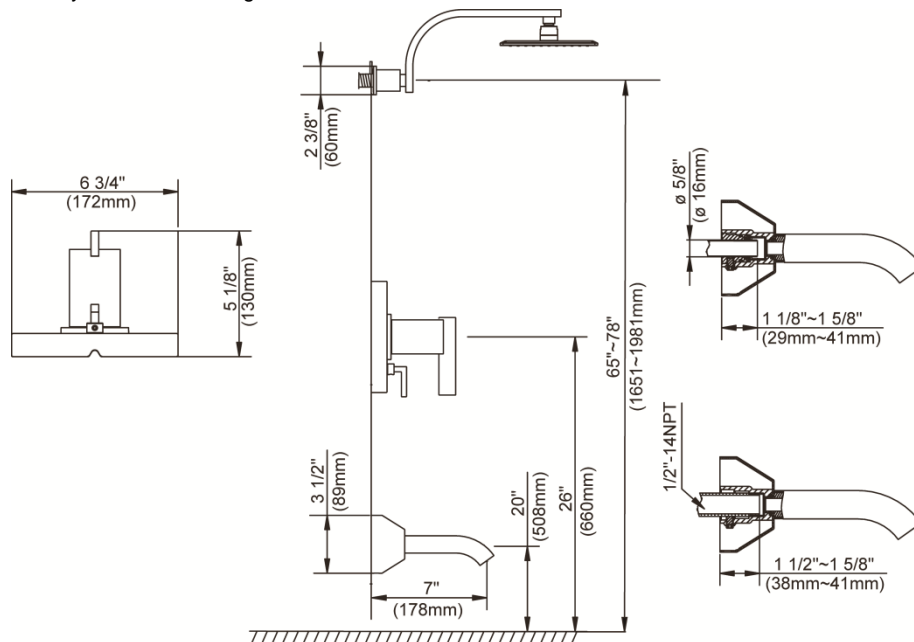
- ADA Accessibility Guidelines for Buildings and Facilities - 4.27.4 Controls and Mechanisms

Warranty

Danze products are covered by a manufacturer's limited "lifetime" warranty for manufacturing defects.

Finishes Available

- Chrome
- Other: Refer to Price List for additional finish



Submittal Information:

Job Name: _____

Location: _____

Contractor: _____

Contact #: _____