

- SPECIFICATIONS (GB-250)**
- 1. 4" inlet/outlet Sch. 40. (No-Hub)
 - 2. Max flow rate: 100 GPM
 - 3. Liquid capacity: 250 Gallons
 - 4. Max grease capacity: 1,076 lbs. (147.4 Gallons)
 - 5. Max solids/sediment capacity: 105 Gallons
 - 6. Unit weight w/std. covers: 230 lbs.
 - 7. 16,000 lb. load rated, bolted, gas/water tight composite covers.
 - 8. Maximum operating temperature 190°F continuous.

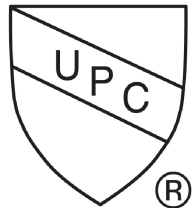
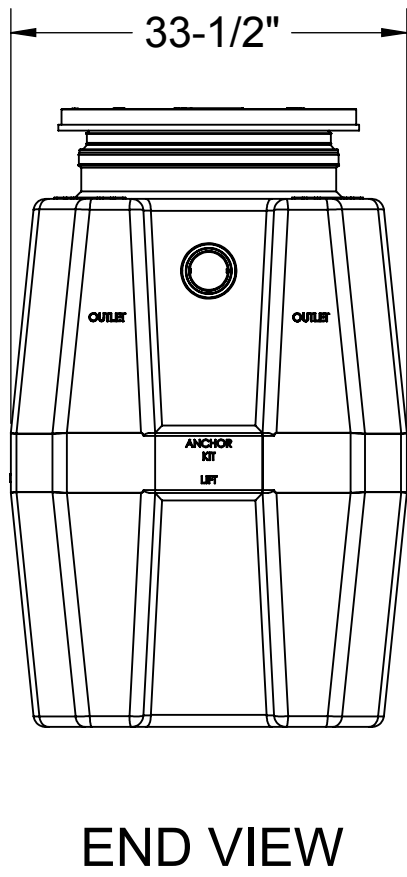
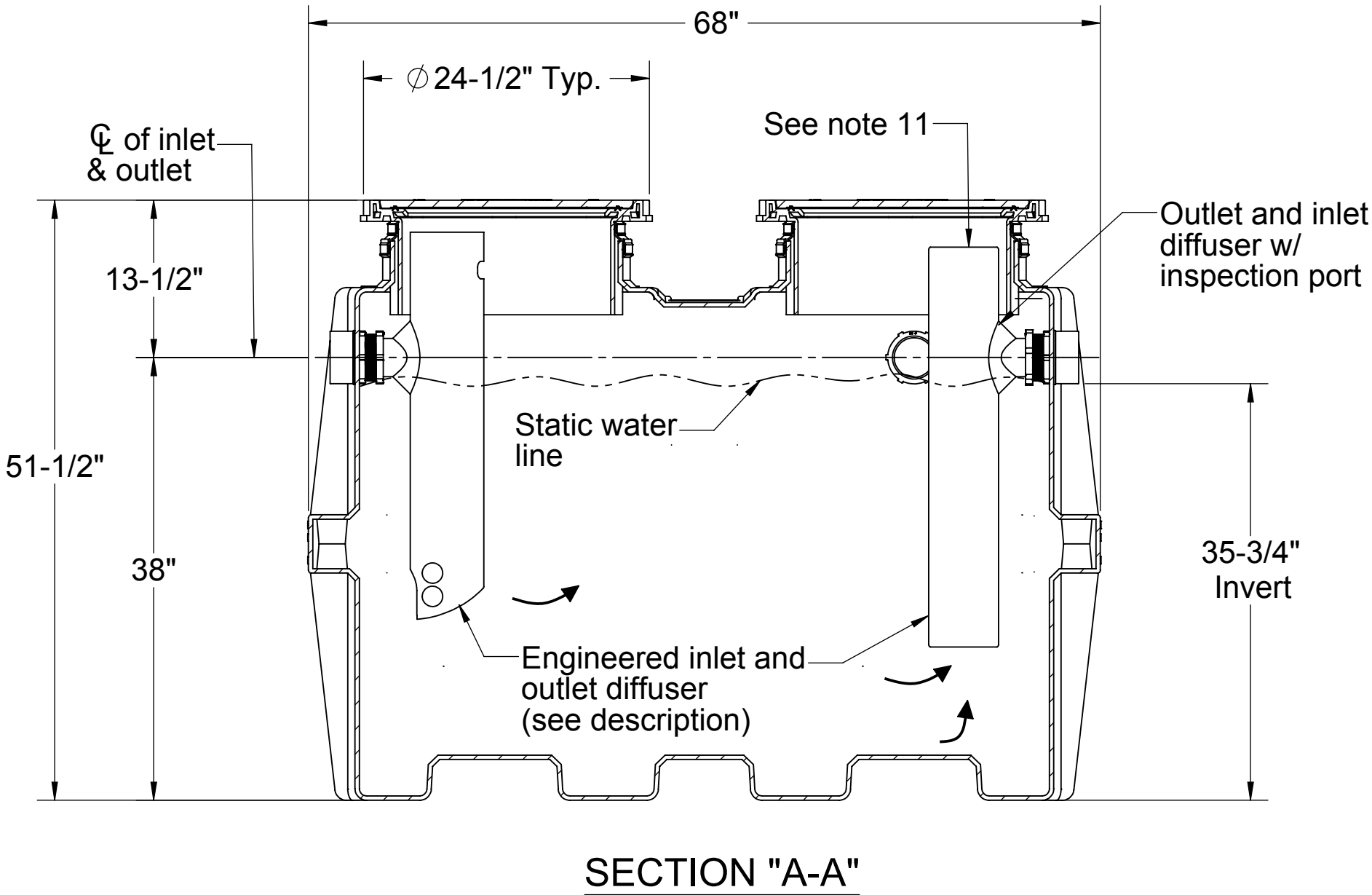
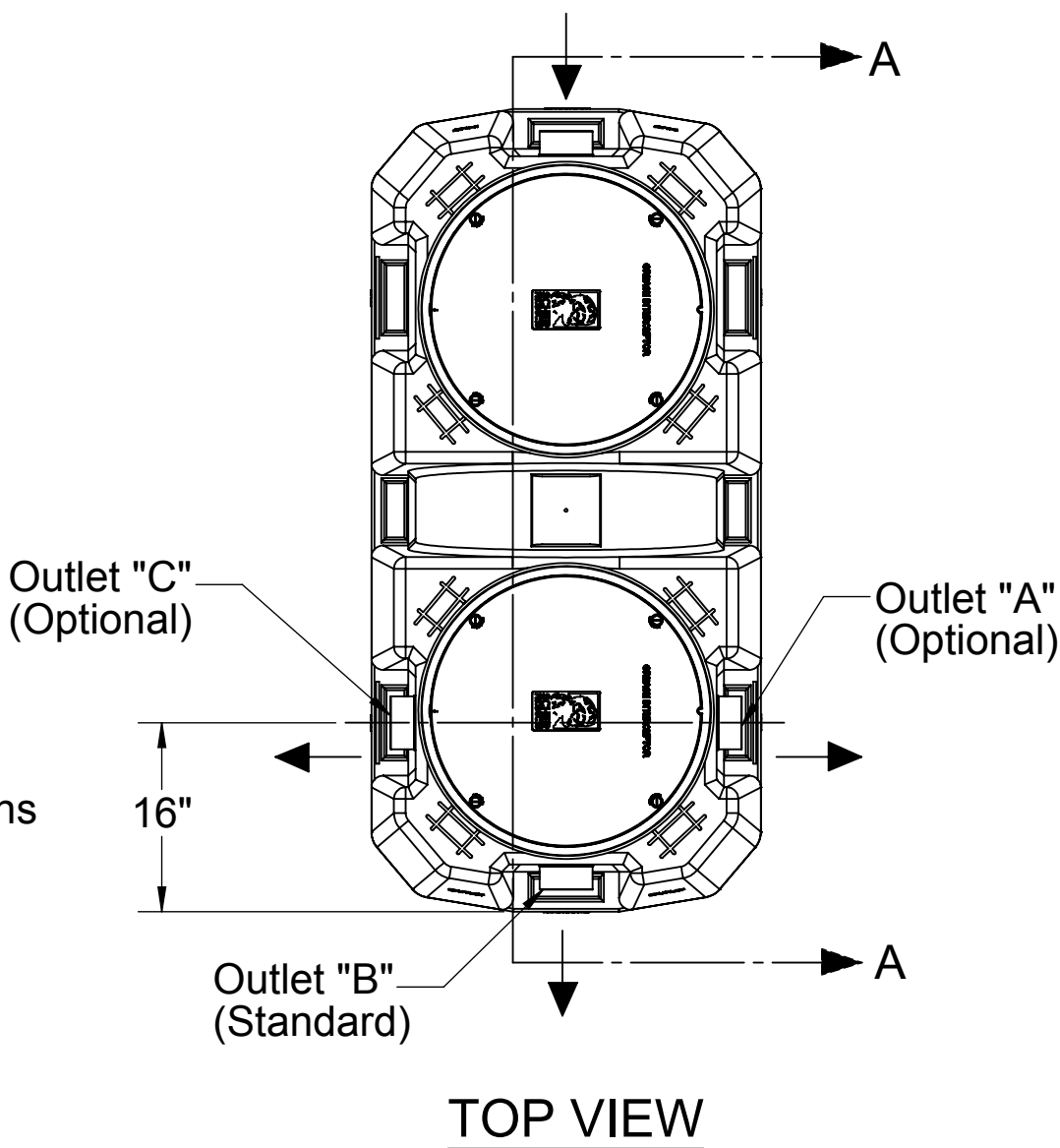
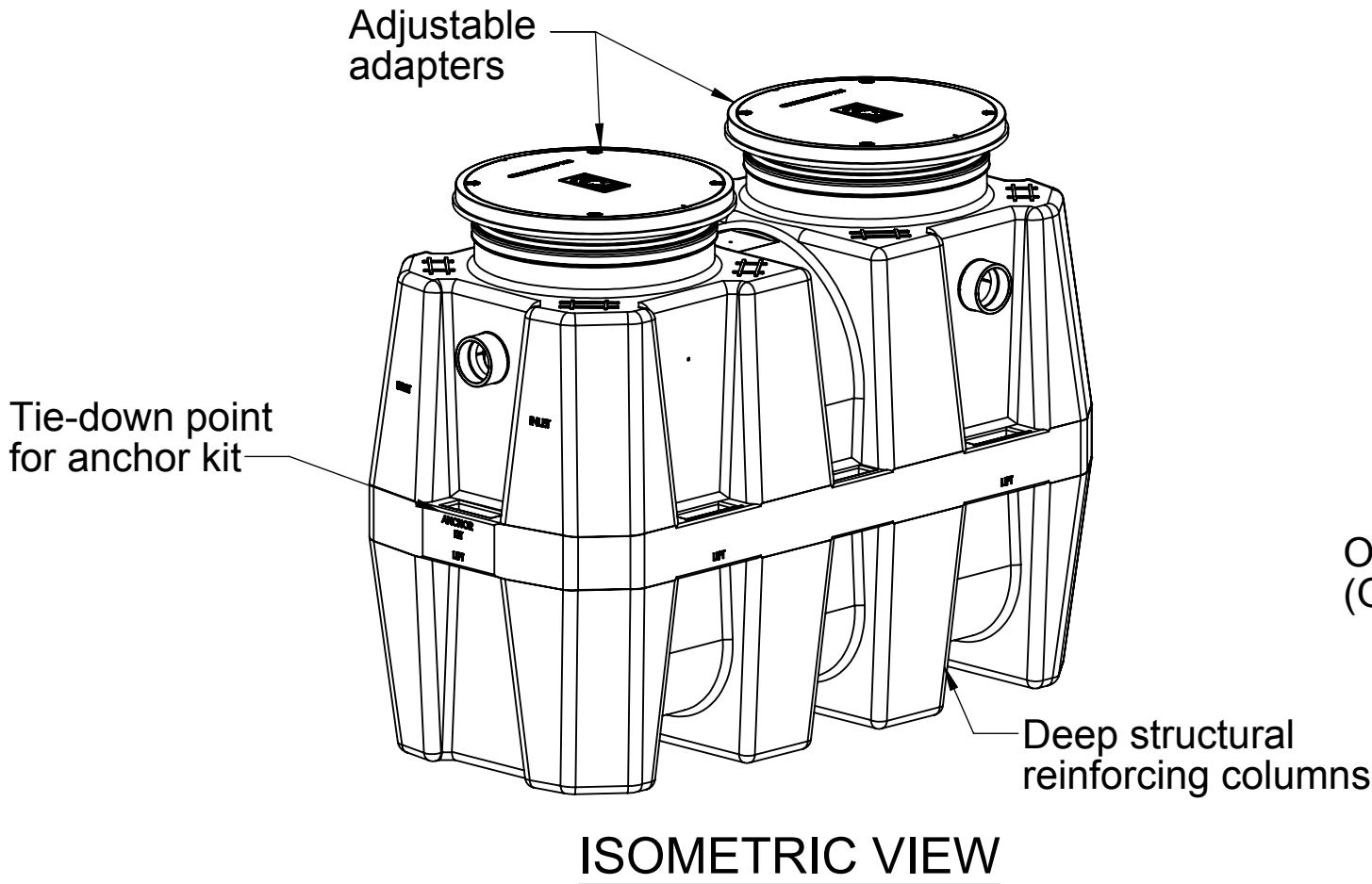
- NOTES**
- 1. Listed by IAPMO to ASME grease interceptor standard #A112.14.3 and CSA B481.1
 - 2. Factory installed Built-in Flow control.
 - 3. For gravity drainage applications only. Do not use for pressure applications.
 - 4. 3/8" thick seamless high density polyethylene walls.
 - 5. Unit supplied with built-in adapter(s) for up to 6" of adjustability. Additional riser(s) available for deeper burial depth.
 - 6. Cover placement allows full access to tank for proper maintenance.
 - 7. Vent not required unless per local code.
 - 8. Narrow footprint allows clearance through doorways and down stairwells.
 - 9. Engineered inlet and outlet diffusers are removable to inspect/clean piping.
 - 10. For on-the-floor or buried applications.
 - 11. Integral Air Relief / Anti-siphon.
 - 12. Three outlet options for easy rough in. Unit shipped with outlet diffuser in outlet "B".

DIFFUSION FLOW TECHNOLOGY
The inlet diffuser splits incoming effluent into two paths that utilize the entire liquid volume of the tank for efficient grease separation. The calibrated openings greatly reduce effluent turbulence. The effluent enters the main chamber without disturbing the existing grease or sediment layers.

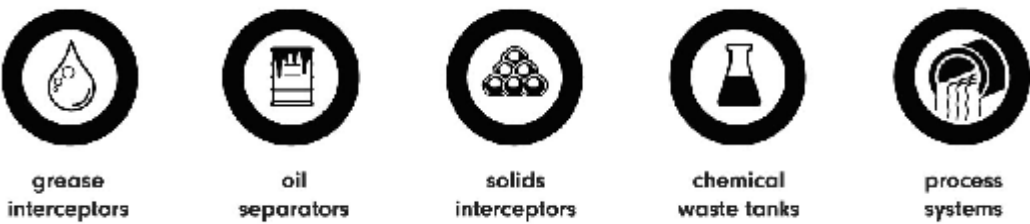
The integral air relief/anti-siphon in the top of the outlet diffuser allows pressure stabilization within the unit during operation. The bottom of the outlet diffuser allows only effluent which is free of grease to exit the tank. It can easily be attached to any of the three outlets provided to ease jobsite piping layouts.

ENGINEER SPECIFICATION GUIDE
Schier Great Basin™ grease interceptor model #GB-250 shall be lifetime guaranteed and made in USA of seamless, rotationally-molded High Density Polyethylene with minimum 1/2" uniform wall thickness. Interceptor shall be furnished for above or below grade installation. Interceptor shall be built in accordance to ASME A112.14.3 (type C), with field adjustable riser system, built-in flow control, built-in test caps and three outlet options. Interceptor flow rate shall be 100 GPM. Interceptor grease capacity shall be 1,076 lbs. Cover shall provide water/gas-tight seal and have minimum 16,000 lbs load capacity.

- OPTIONS:**
- Teleglide field adjustable risers for extending covers to grade
 - Male pipe thread connections
 - 6" Plain end pipe connections (No-Hub)
 - High water anchor kit (set of 2)
 - Clamping collar kit
 - H20 rated pickable cast iron cover



SPECIFICATION SHEET



PROPRIETARY AND CONFIDENTIAL

THE INFORMATION CONTAINED IN THIS DRAWING IS THE SOLE PROPERTY OF SCHIER PRODUCTS. ANY REPRODUCTION IN PART OR AS A WHOLE WITHOUT THE WRITTEN PERMISSION OF SCHIER PRODUCTS IS PROHIBITED.

PART NUMBER: GB-250

DESCRIPTION:

GREAT BASIN SERIES POLYETHYLENE GREASE INTERCEPTOR 100 GPM, 250 LIQUID GALLONS, 1,076 GREASE POUNDS CAPACITY

DWG BY: TEU DATE: 11/13/06 REV: 9 - 5/3/13 MATL: PE

Schier Products
9500 Woodend Road
Edwardsville, KS 66111
Tel: 800-827-7119
Fax: 800-827-9664
www.schierproducts.com

Made in the U.S.A

