

PFWS5205

PROFLO

Two Handle Widespread Lavatory Faucet

Product Features

- 6"-12" installation
- Flow rate: 1.5 GPM
- Metal lever handles
- Washerless cartridge
- With brass pop-up
- Max deck thickness: 1-11/16"
- 1/2" IPS connections
- Metal construction
- Meets ANSI:A112.18.1M
- NSF 61 compliant
- cUPC/IAPMO Listed
- WaterSense rated

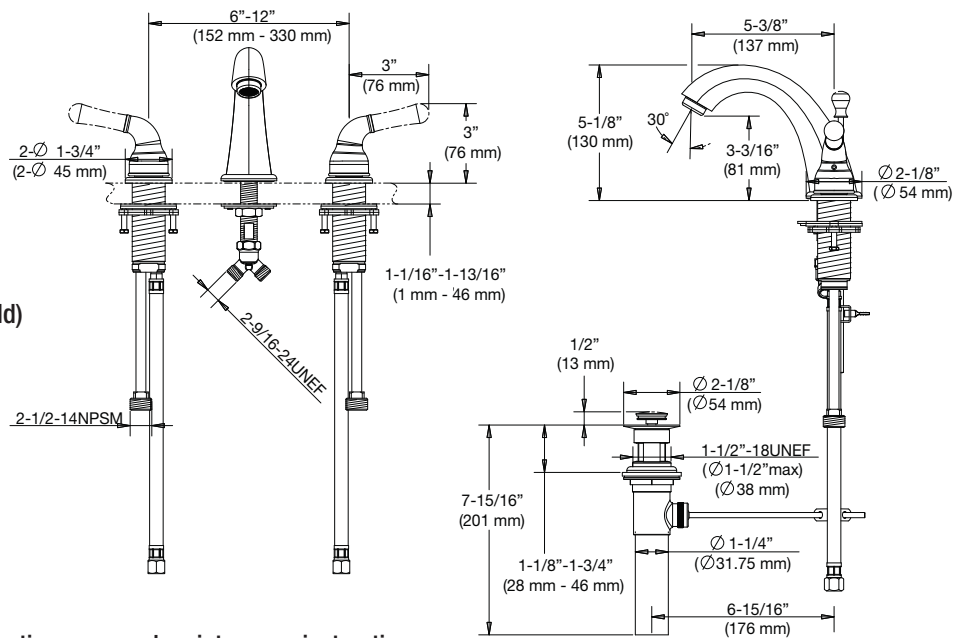


PFWS5205CP

Model Numbers

- PFWS5205CP polished chrome finish
PFWS5205BN brushed nickel finish
PFWS5205RB oil rubbed bronze finish

Product Specifications



Available Parts

- PF8LAVEXTWT Widespread faucet thick deck mounting kit
PFA66D091N Washerless Cartridge (Hot & Cold)

Warranty and Codes

This product comes complete with installation, operating, care and maintenance instructions. This PROFLO faucet carries a limited lifetime warranty when installed in residential applications. The warranty is five years in commercial applications. This product meets ANSI: A112.18.1M. *Compliant with lead content requirements of US Senate Bill S.3874



Distributed Exclusively by Ferguson and Wolsley Canada