

For Residential and Commercial Applications

Job Name		Engineer / Architect	
Job Location		Wholesaler	
Submittal Date		Contractor	

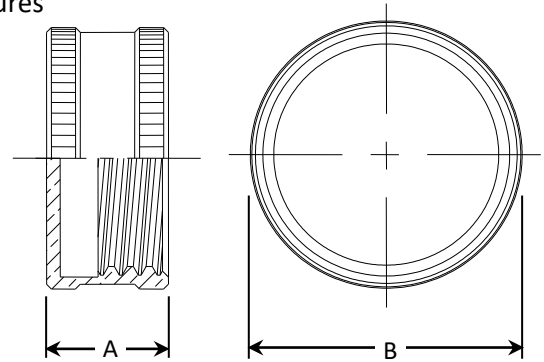
HC-1 Garden Hose Cap – Female Hose Thread

Use: For use with residential and commercial grade garden hose. All female hose thread connections require a rubber washer inserted prior to installation.

Operating Specifications:

Temperature: -35° to 100°F at maximum operating pressures

Working Pressure: 75 PSI maximum, intermittent to 150 PSI



PART DIMENSIONS (Inches)

Model	DIM. A	DIA. B
HC-1	.56	1.19

Standard

FITTING MATERIAL SPECIFICATIONS

Body	Brass
Hose Washer*	EPDM

*Where noted

Low-lead

FITTING MATERIAL SPECIFICATIONS

Body	Low-lead brass
Hose Washer*	EPDM

Standard Part Listing:

- ☐ HC-1 3/4" female hose thread, rough brass with hose washer
- ☐ HC-1 B 3/4" female hose thread, rough brass, bulk
- ☐ HC-1 CB 3/4" female hose thread, chrome plated, bulk

Low-lead Part Listing:

- ☐ HC-1X 3/4" female hose thread, rough brass with hose washer (Made in USA)
- ☐ HC-1X B 3/4" female hose thread, rough brass, bulk (Made in USA)