

SPEAKMAN®

Vandal-Resistant Sensorflo® Faucet

S-9010-CA
S-9020-CA

SPECIFICATION



MODELS:

- ☐ S-9010: Battery Powered
- ☐ S-9020: AC Powered

FEATURES:

- Vandal-resistant and Easy Maintenance
- Components housed above counter
- Integral hot and cold mixing valves
- Hot and cold check valves and filters
- Pre-assembled
- All metal housing
- 0.5 gpm (1.9 L/min) and 1.5 gpm (5.7 L/min) flow controls
- 60 second flow time out feature
- Lead free brass construction.

COMPLIANCE:

- Meets existing ASME A112.18.1/CSA B125.1, CA AB1953 and WaterSense standards



FINISH:

- Polished Chrome (standard)

OPTIONS:

ADD SUFFIX TO MODEL #

- Two (2) stainless steel flexible supply hoses to supply stops ☐ -HS
- One (1) stainless steel hose for tempered water systems (S-8700, S-8710, & S-8720 only) ☐ -HTS
- 1.5 gpm laminar flow control outlet ☐ -LF
- Less transformer ☐ -LT
- Under counter thermostatic mixing valve ☐ -TMV-CA
- Vandal-resistant screws for removable cover and custom wrench ☐ -VRS

WARRANTY:

- 1 year limited

SEE REVERSE FOR ROUGH-IN DIMENSIONS

THIS SPACE FOR ARCHITECT/ENGINEER APPROVAL.

SPEAKMAN®

400 ANCHOR MILL ROAD | NEW CASTLE, DE 19720
P: 800-537-2107 | F: 800-977-2747
WWW.SPEAKMANCOMPANY.COM

REVISION DATE: JANUARY 2014



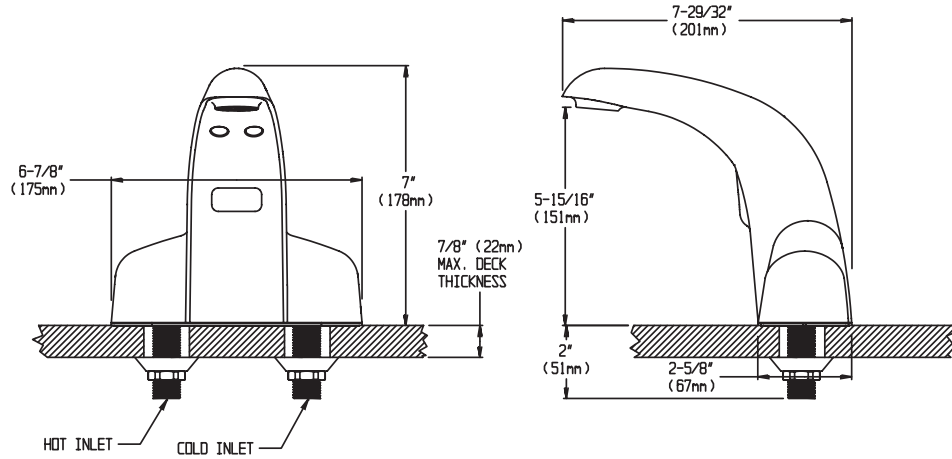
Management Systems
Registered to ISO 9001

SPEAKMAN®

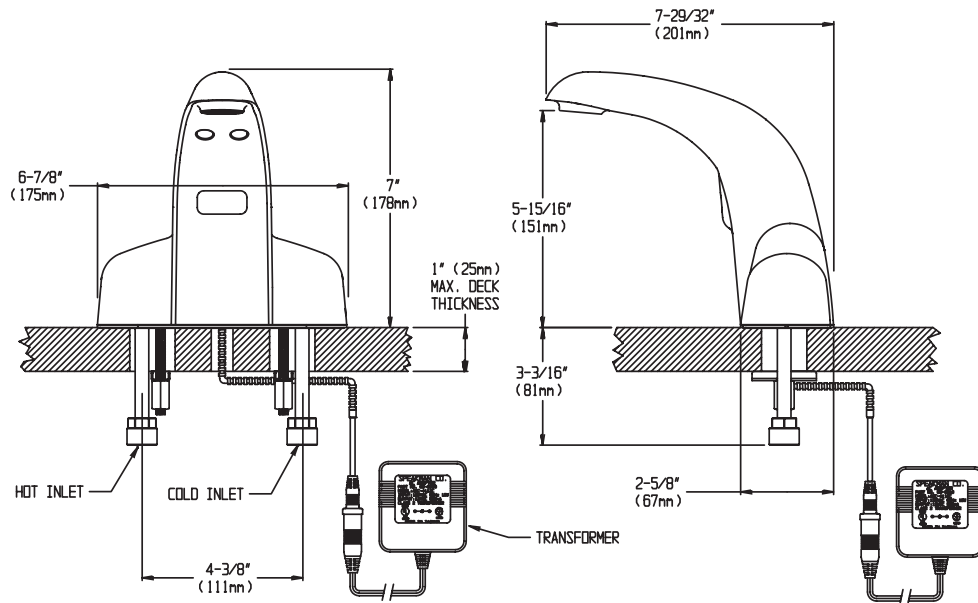
Vandal-Resistant Sensorflo® Faucet S-9010-CA, S-9020-CA

SPECIFICATION

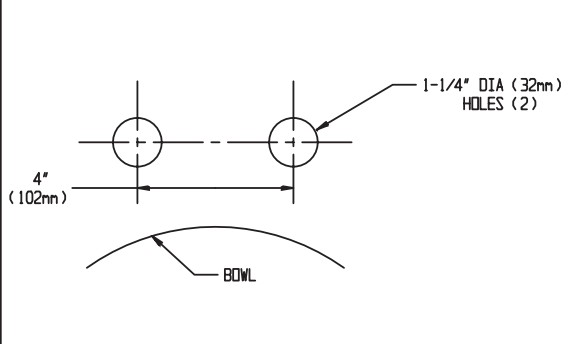
S-9010-CA



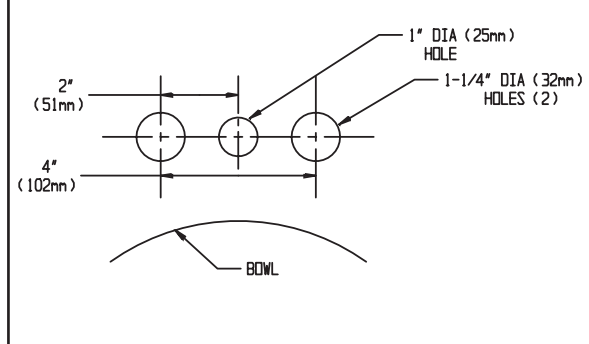
S-9020-CA



S-9010-CA



S-9020-CA



NOTE: 1. All dimensions are in inches (millimeters) unless otherwise specified and are subject to change without notice. 2. Inlet is 3/8" compression with male threads. 3. Position faucet as close to the edge of the sink as possible

THIS SPACE FOR ARCHITECT/ENGINEER APPROVAL.

SPEAKMAN®

400 ANCHOR MILL ROAD | NEW CASTLE, DE 19720
P: 800-537-2107 | F: 800-977-2747
WWW.SPEAKMANCOMPANY.COM

REVISION DATE: JANUARY 2014



Management Systems
Registered to ISO 9001