



Halsey Taylor®
Satisfying Thirsts Since 1912

MODEL: ☐ HVR8HD-BL ADA



This water cooler is certified to
NSF/ANSI 61.

GENERAL

Self-contained, wall hung electric refrigerated water coolers with reliable vandal-resistant design. Constructed in 14 gauge heavy-duty stainless steel with a curved profile offering a safe and unobtrusive design. Ideal for applications prone to tampering, such as prisons and educational facilities. Includes the water-efficient, SmartFlow™ Bubbler.

When properly installed, unit meets state and federal requirements as defined by the Americans with Disabilities Act for both children or adults. Unit is certified to NSF/ANSI 61 and meets requirements of the Safe Drinking Water Act. Unit is UL Listed and provides 50°F water at 80°F inlet water and 90°F ambient.

COOLER CABINET / BASIN

Heavy-duty 14 gauge stainless steel cabinet with front access panel and integral basin. Durable satin finish resists stains and corrosion and is easy to maintain. Perforated venting with screens to prevent objects from being inserted into cooler.

COOLER TOP

Basin has embossed bubbler pad. Anti-splash ridge reduces splatter and contoured to insure proper drainage. Features heavy-duty, vandal-resistant drain.

VANDAL RESISTANT SMARTFLOW™ BUBBLER

Vandal-resistant, water-efficient bubbler is one-piece, chrome-plated. Unit has integral hood guard design to prevent contamination from other users, airborne deposits and tampering. Reduces the flow of water by nearly 40% ▲ but maintains a steady, satisfying water stream. Keyed into position to prevent rotation.

PUSHBUTTON ACTUATION MECHANISM

Self-closing, vandal-resistant pushbutton does not require grasping or twisting. Allows front access stream height adjustment.

AUTOMATIC STREAM HEIGHT REGULATOR

Self-closing assembly is located inside unit to prevent tampering. Unit resists corrosion and liming. A constant stream height is automatically maintained under line pressures that vary from 20 to 105 psi.

▲ over average market performance

INLET STRAINER

Easily cleaned in-line strainer screen traps articles of 140 microns or larger before entering the waterway.

TEMPERATURE CONTROL

Positive sensing thermostat for controlling temperature of storage tank water. Factory set at 50°F. Adjustable +/- 5°F.

STORAGE TANK

Stainless steel evaporator/storage tank for long life.

REFRIGERATION SYSTEM

Hermetically sealed, positive start compressor with lifetime lubrication, built-in overload protection, efficient capillary sizing, large capacity dryer-strainer, and self-lubricated fan cools copper/aluminum condenser. System uses R134a refrigerant. Protected by Halsey Taylor's Limited 5 Year Warranty.

VENTILATION

Insure proper ventilation by maintaining 6" (152mm) minimum clearance from cabinet venting to wall.

SUGGESTED SPECIFICATIONS

Self-contained, vandal-resistant pressure water cooler that shall deliver 8 gph of 50°F drinking water at 90°F ambient and 80°F inlet water. Unit shall be constructed of 14 gauge stainless steel with integral basin. Venting shall include protective screening. Front vandal-resistant push button activation with less than 5 lbs of force. Water-efficient, vandal-resistant bubbler shall be one-piece and operate on 20-105 psi supply line pressure. Shall include front access stream height adjustment. Cooling system shall include insulated stainless steel evaporator tank, R134a refrigerant and calibrated capillary tube for refrigerant control. Shall include adjustable, accessible thermostat. Shall comply with ANSI 117:1 and American with Disabilities Act for both children and adult frontal approach. The manufacturer shall certify the unit to meet the requirements of NSF/ANSI 61, Safe Drinking Water Act and be UL Listed.

NOTE: Continued product improvement makes specifications subject to change without notice. See Halsey Taylor website for most current spec sheet.

Vandal-Resistant Heavy-Duty 14-Gauge

Bi-Level Wall-Mounted Barrier-Free Cooler



Stainless Steel Finish Only

Optional Accessories (extra cost)

☐ Water Filter

JOB NAME: _____

ENGINEER/CONTRACTOR NAME: _____

APPROVAL: _____

DATE: _____

HVR8HD-BL ADA SERIES

Model No.	Base* Rate Cap.	F.L. Amps	Rated Watt Usage
HVR8HD-BL ADA	8.0	4.0	370

* With projector service and tap water at 80°F and 90° F ambient
Trap and service stop not included



halseytaylor.com

HALSEY TAYLOR, 2222 CAMDEN COURT, OAK BROOK, ILLINOIS 60523

HVR8HD-BL ADA

Vandal-Resistant Heavy Duty 14-Gauge Bi-Level Barrier-Free Cooler

(CONTINUED)

MOUNTING HEIGHT

Mounting height recommended 31 1/2" from basin to floor. May be mounted at any desired height. Check local codes.

MOUNTING INSTRUCTIONS

Mount trap and install service stop to supply line. Anchor hanger bracket securely to wall on all sides. Remove slip nut and gasket from trap and install on waste line tube. Hang cooler on bracket and engage waste line tube into trap

inlet. Centerline height of waste outlet will vary from floor line depending on mounting height. Install 3/8" supply tube to in-line strainer. Secure bottom of cooler to wall using holes provided.

Trap and service stop not included.

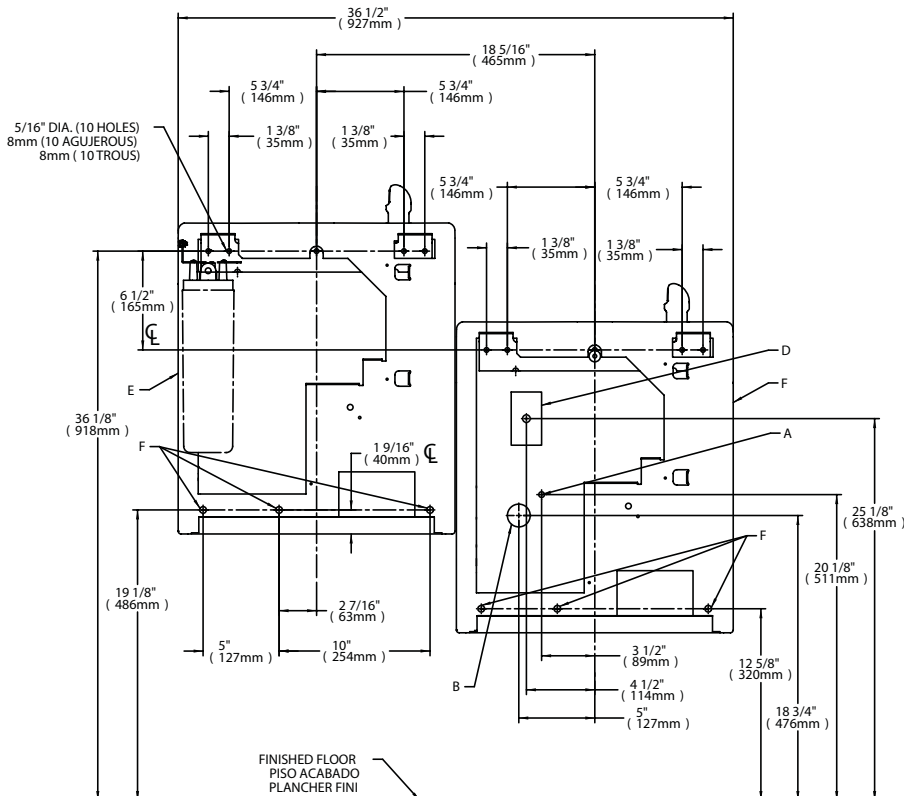
OPERATING PRESSURES:

Supply water - 105 psi maximum

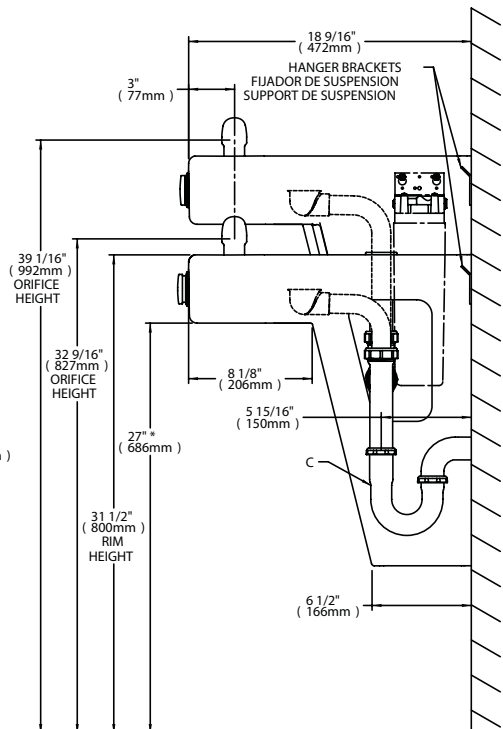
ELECTRICAL

115 Volt / 60 Hz units furnished with plug-in, 3 wire grounding type service cord. Standard 115 volt, 60 Hz, single phase. Install 115 volt receptacle rated at 15-amp minimum to receive 3-wire parallel blade grounding type male plug.

FRONT VIEW / WALL LAYOUT



SIDE VIEW



LEGEND:

A = RECOMMENDED WATER SUPPLY LOCATION. SHUT OFF VALVE (NOT FURNISHED) TO ACCEPT 3/8" O.D. UNPLATED COPPER TUBE.

B = RECOMMENDED LOCATION FOR WASTE OUTLET 1-1/2" O.D. DRAIN

C = 1-1/2" TRAP NOT FURNISHED

D = ELECTRICAL SUPPLY (3) WIRE RECESSED BOX

E = INSURE PROPER VENTILATION BY MAINTAINING 6" (152 mm) (MIN.) CLEARANCE FROM CABINET LOUVERS TO WALL.

F = 5/16 BOLT HOLES FOR FASTENING UNIT TO WALL

* Adult ADA requirement (shown) - 27" (686mm);

Child ADA requirement - 24" (608mm).

Adjust all other measurements accordingly.

Halsey Taylor®