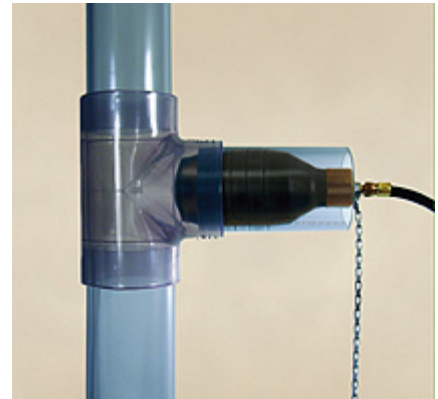


Pressure Relief Pneumatic Pipe Plugs

The Test-Tite® Pressure Relief Pneumatic Test Plug is a patented device designed for the purpose of testing or temporary blocking of plumbing DWV systems. Manufactured with a factory sealed inflation fitting which features an internal pressure relief device. The internal pressure relief device acts as a safety valve to reduce the chances of over inflation. The Pressure Relief Test Plug is designed to release excess pressure above the suggested inflation pressure, thus reducing the possibility of over inflation or blowouts.

PATENT# 7,597,118



Boxed		Pipe Use Range						Maximum Back Pressure			
Nominal Size (inches)	Product Code	Minimum Pipe Diameter (inches)	Maximum Pipe Diameter (inches)	Plug Diameter (inches)	Plug Length (inches)	Overall Plug Length (inches)	Inflation Pressure (psig)	Water Head (feet)	Air (psig)	Units / Case	Shipping Weight (pounds)
1 1/4-1 1/2	83764	1.10	1.75	1.13	4.00	5.63	45	30	13	6	
2	83765	1.75	2.25	1.88	3.00	5.38	40	30	13	6	
3	83766	2.25	3.25	2.50	3.63	6.75	35	30	13	6	
4	83767	3.25	4.25	3.38	5.25	9.00	30	30	13	6	

Bulk		Pipe Use Range						Maximum Back Pressure			
Nominal Size (inches)	Product Code	Minimum Pipe Diameter (inches)	Maximum Pipe Diameter (inches)	Plug Diameter (inches)	Plug Length (inches)	Overall Plug Length (inches)	Inflation Pressure (psig)	Water Head (feet)	Air (psig)	Units / Case	Shipping Weight (pounds)
1 1/4-1 1/2	83756	1.10	1.75	1.13	4.00	5.63	45	30	13	12	
2	83757	1.75	2.25	1.88	3.00	5.38	40	30	13	12	
3	83758	2.25	3.25	2.50	3.63	6.75	35	30	13	12	
4	83759	3.25	4.25	3.38	5.25	9.00	30	30	13	12	