



Residential Gas

Water Heaters

PREMIER® HIGH EFFICIENCY

INSTALLATION FRIENDLY

- Allows for easy replacement of standard atmospheric vent heaters.
- Easily connects to existing B-vent.

FAN-ASSISTED, CATEGORY 1 APPLIANCE

- Plugs into standard 110/120V outlet (10 foot power cord included).

24V ELECTRONIC CONTROLS

- Tighter differential for more consistent hot water delivery.

ELECTRONIC IGNITION

- The durable hot surface ignitor eliminates pilot relight issues (no standing pilot).

LCD USER INTERFACE

- Easy-to-read, eye level display. Simple temperature settings and adjustments. Service diagnostics are in plain text.

POWERED ANODE ROD

- Powered anodes are non-sacrificial, so they do not deplete over time. Additionally, they provide exceptional performance in all water conditions.

MEETS ENERGY EFFICIENCY REQUIREMENTS FOR MOST GAS UTILITY REBATE PROGRAMS AND IS ENERGY STAR® QUALIFIED

DURABLE TAMPER-RESISTANT BRASS DRAIN VALVE

DYNACLEAN™ DIFFUSER DIP TUBE

- Helps reduce lime and sediment buildup, maximizes hot water output.
- Made from long-lasting PEX cross-linked polymer.

GREEN CHOICE® GAS BURNER

- Patented "Eco-Friendly" Green Choice® gas burner reduces NOx emissions by 33% compared to standard burners and meets low NOx requirements of less than 40ng/j.

CSA CERTIFIED AND ASME RATED T&P RELIEF VALVE

CODE COMPLIANCE: UBC, CEC, SBCC, CABO, HUD, BOCA NATIONAL CODES, CURRENT EDITION ASHRAE/IESNA 90.1 AND 2004 NAECA STANDARDS

DESIGN-CERTIFIED BY CSA INTERNATIONAL

- According to ANSI Z21.10.1 - CSA 4.1 Standards governing storage-type water heaters.

6-YEAR LIMITED TANK AND PARTS WARRANTY

- For complete information, consult written warranty or go to statewaterheaters.com.



SOLID. STATE.



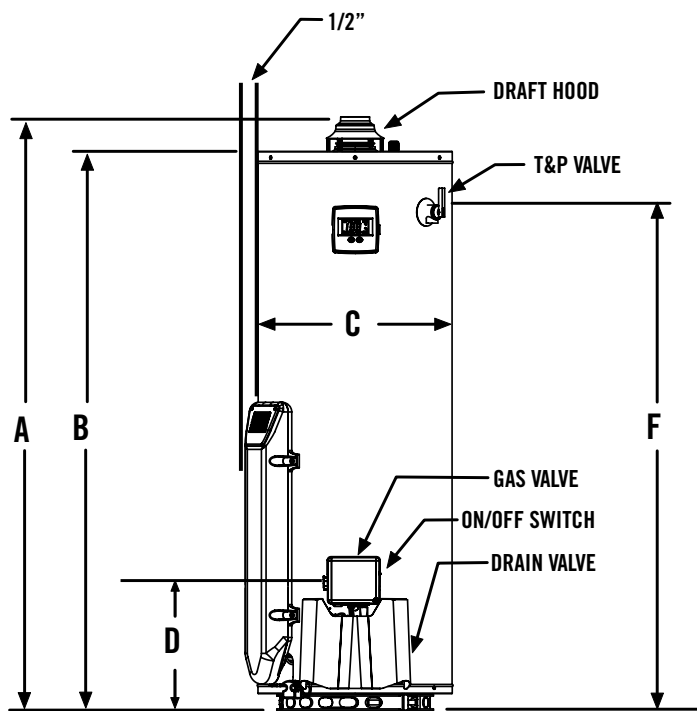


Residential Gas

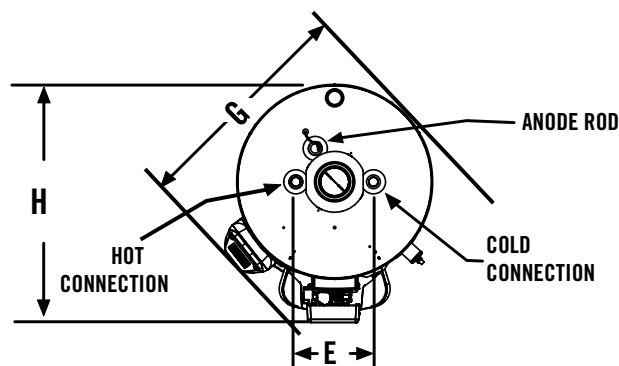
Water Heaters

Model Number	Gallon Capacity	First Hour Rating Gallons	Energy Factor (EF)	BTU Input Gallon Per Hour	Recovery @ 90°F Rise Gallon Per Hour	Dimensions in Inches										Approx. Shipping Weight (lbs)
						Foam Thickness	A	B	C	D	E	F	G	H	Draft Hood	
GP6 40 YPCT	40	70	0.70	40,000	43	2	61-3/4	58	20	13-1/4	8	51-1/2	23-1/4	25	3 or 4	157
GP6 50 YPCT	50	81	0.70	40,000	43	2	60-5/8	57-1/8	22	13-1/4	8	50-1/2	25-1/4	27	3 or 4	171

All dimensions in inches
 Recovery capacity based on actual performance tests.
 Water Connections – 3/4" on all models.
 Not available in LP gas (Propane).
 Certified for installations up to 00 ft. elevations.



FRONT VIEW



TOP VIEW

Maximum Hydrostatic Working Pressure: 150 PSI