

32" CALVERTON

OFFSET DOUBLE-BOWL STAINLESS STEEL UNDERMOUNT SINK - LARGE BOWL RIGHT

SKU: 948492



FEATURES

- It is recommended to have the sink at the job site before cutting cabinet or counter top.
- Features a low center divide for maneuvering large pots and pans.
- Sound absorption pads on the underside of sink.
- Has an undercoating to prevent condensation buildup.
- Minimum Cabinet Size: 36" .

SIGNATURE HARDWARE Lifetime Warranty

See website for detailed warranty information.

CONTENTS

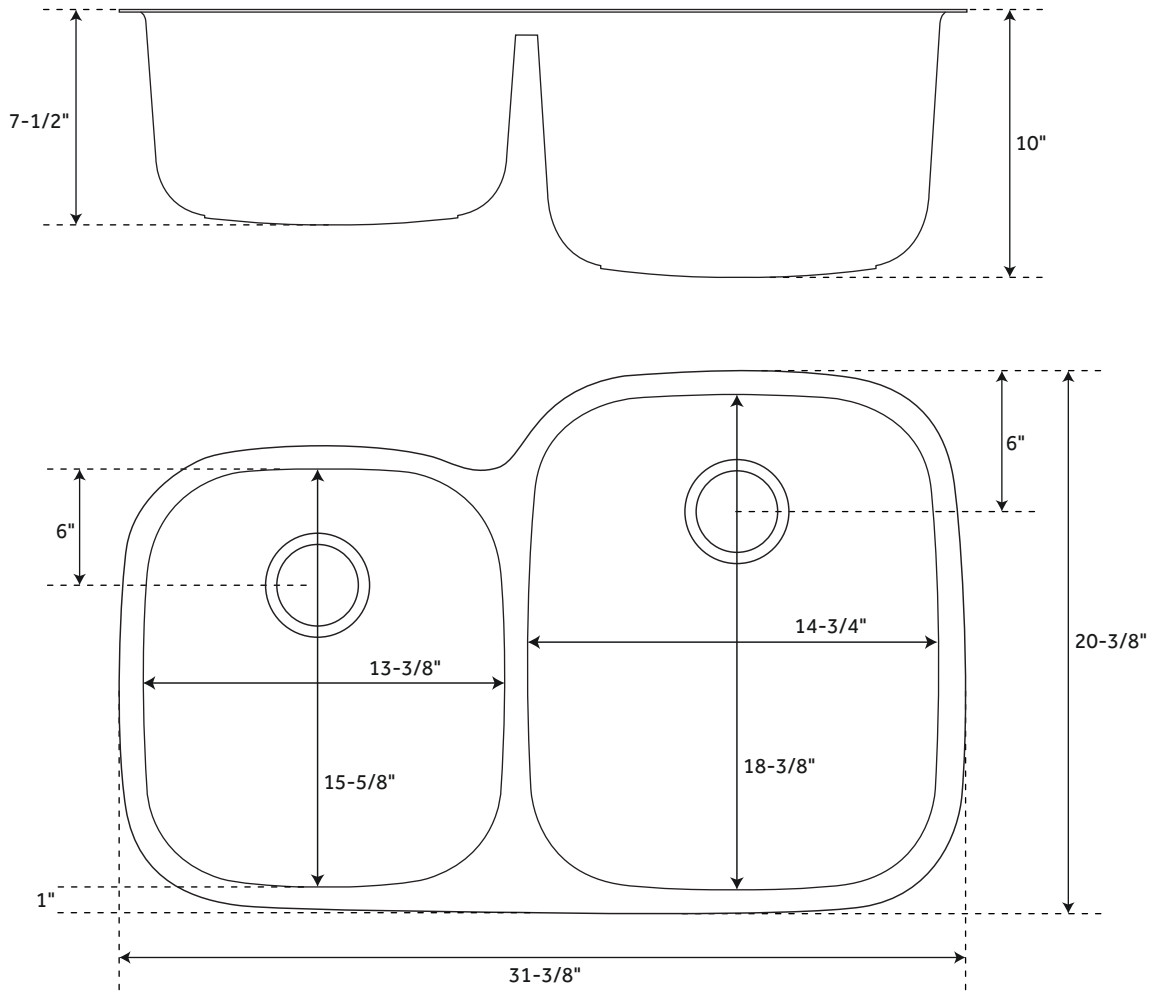
SINK	PAGE 2
GRID 1	PAGE 3
GRID 2	PAGE 4

REVISED 02/19/2020

32" CALVERTON

OFFSET DOUBLE-BOWL STAINLESS STEEL UNDERMOUNT SINK - LARGE BOWL RIGHT

SKU: 948492



FEATURES

Material: Stainless Steel
Basin Split: 60/40
Shape: Rectangle
Sink Installation: Undermount
Faucet Centers: No Faucet Hole
Number of Basins: 2
Product Color: Stainless Steel
Length: 31-3/8"
Width: 20-3/8"
Height: 10"
Large Bowl Length: 14-3/4"
Large Bowl Width: 18-3/8"
Small Bowl Length: 13-3/8"
Small Bowl Width: 15-5/8"
Metal Gauge/Thickness: 16
Faucet Included: No
Faucet Holes: No Faucet Hole
Drain Placement: Rear-Center
Drain Included: Optional
Fits Drain Hole Size: 3-1/2"
Mounting Hardware Included: Yes

CODES/STANDARDS

cUPC
ASME A112.19.3/CSA B45.4



SIGNATURE HARDWARE LIFETIME WARRANTY

See website for warranty information



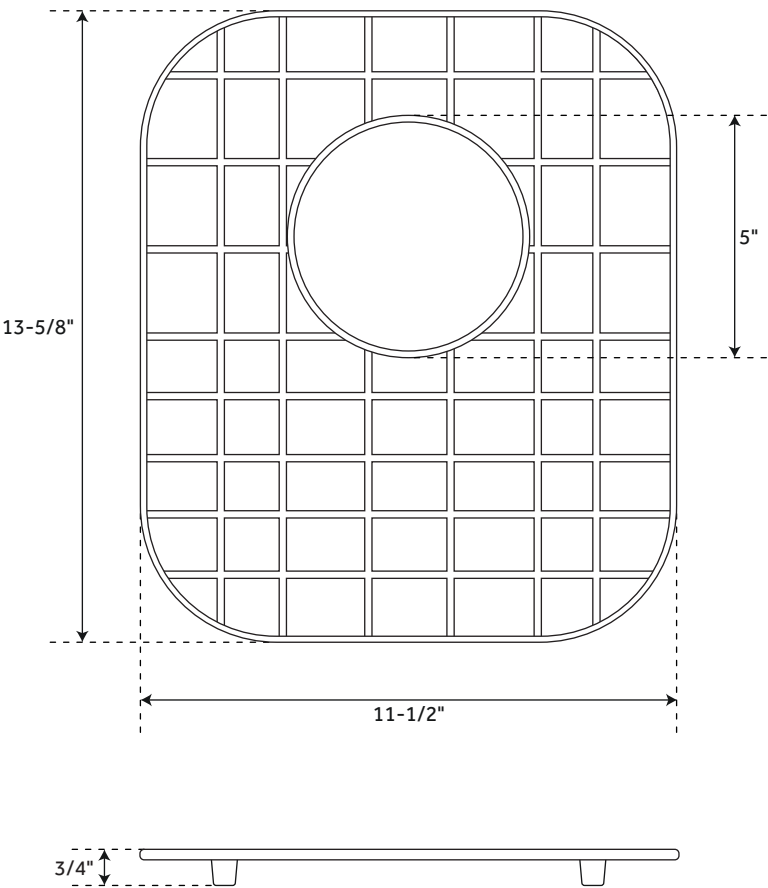
All dimensions and specifications are nominal and may vary. Use actual products for accuracy in critical situations.

PAGE 2
CODE: SHCAUC3221R

SINK GRID

FOR 32" CALVERTON OFFSET DOUBLE-BOWL STAINLESS STEEL UNDERMOUNT SINK

SKU: 948492



FEATURES

- Material: Stainless Steel
- Length: 11-1/2"
- Width: 13-5/8"
- Height: 3/4"
- Drain Size: 5"

**SIGNATURE HARDWARE
LIFETIME WARRANTY**

See website for warranty information

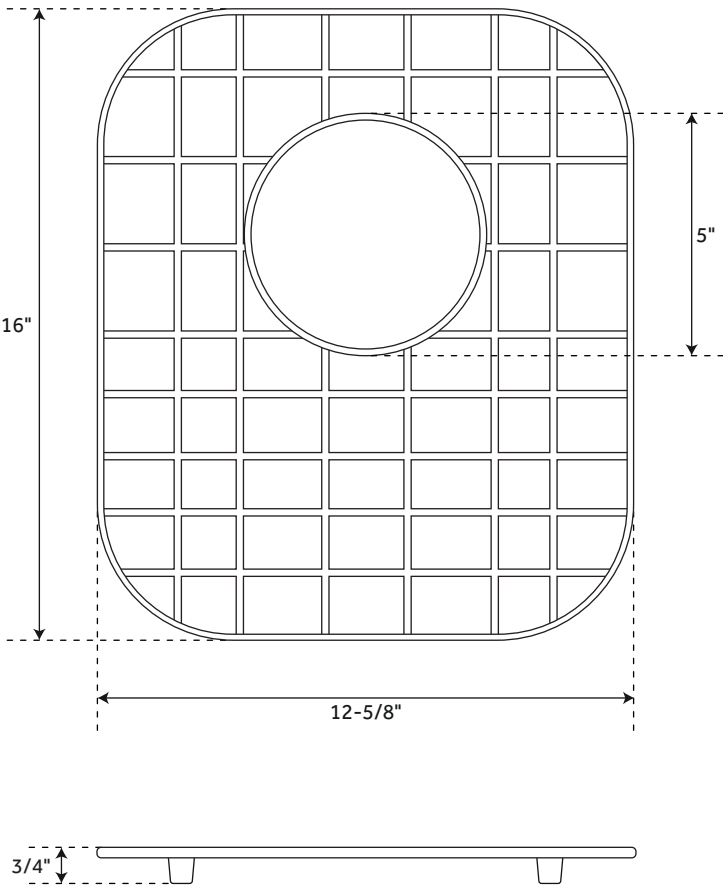


All dimensions and specifications are nominal and may vary. Use actual products for accuracy in critical situations.

SINK GRID

FOR 32" CALVERTON OFFSET DOUBLE-BOWL STAINLESS STEEL UNDERMOUNT SINK

SKU: 948492

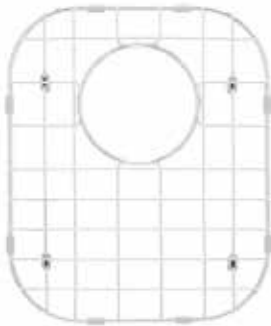


FEATURES

- Material: Stainless Steel
- Length: 12-5/8"
- Width: 16"
- Height: 3/4"
- Drain Size: 5"

**SIGNATURE HARDWARE
LIFETIME WARRANTY**

See website for warranty information



All dimensions and specifications are nominal and may vary. Use actual products for accuracy in critical situations.