



AIR TORQUE

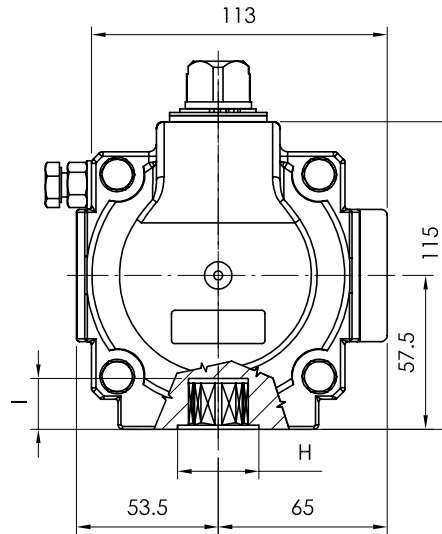
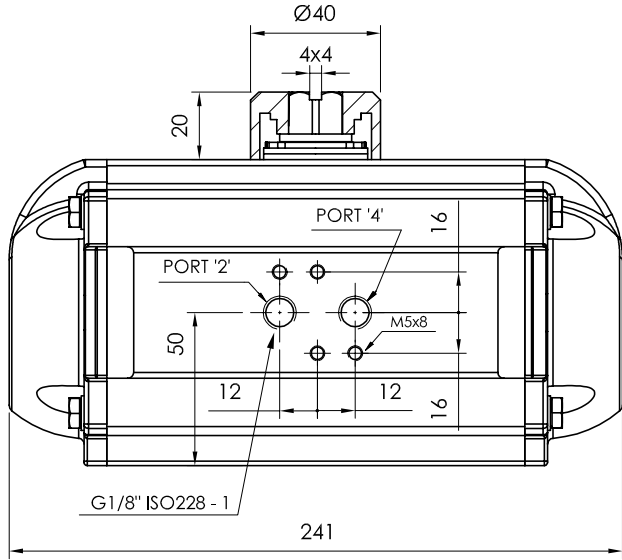
AIR TORQUE S.p.A.
 via Alla Campagna, N°1
 24060 Costa di Mezzate(Bg) Italy
 Tel.: +39 035 682299
 Fax: +39 035 687791
 E-mail: info@airtorque.it

Technical Data Sheet n° **PT250DM**
 Issued on: 12/04

Page: 1/1

Model PT250
DA and SR - 90°

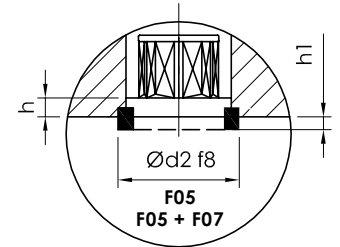
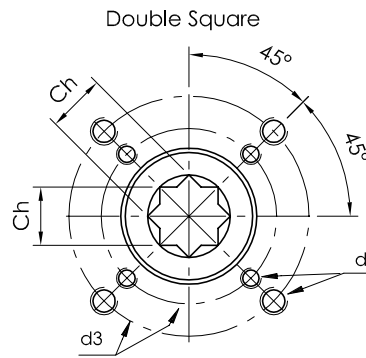
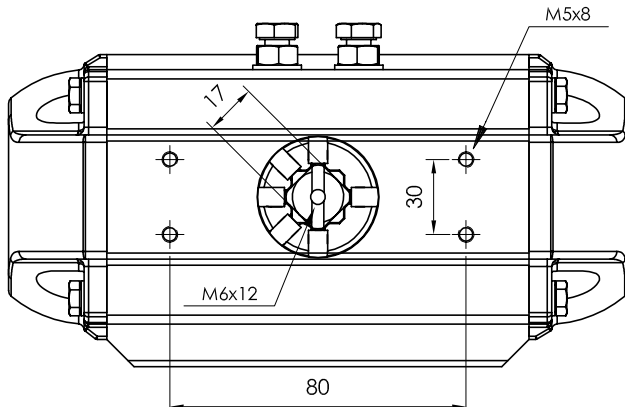
Dimensions in mm



Available flange:

- ⇒ F05
- ⇒ F05 + F07

Flange Dimensions		
ISO 5211	F05	F07
d2 f8	40	NA
d3	50	70
d4	M6x9	M8x12
H	40	40
Ch	17	17
l min.	19	19
h min.	1,5	1,5
h1	2	2
Pressure connection	B 1	
Ancillary Attachment	AA 1	



Spigot available only on request

TYPE	OUTPUT TORQUE FOR DOUBLE ACTING IN Nm												WEIGHT (Kg)									
	2,5 bar		3 bar		3,5 bar		4 bar		4,2 bar		4,5 bar			5 bar		5,5 bar		6 bar		7 bar		8 bar
Pressure	0°	90°	0°	90°	0°	90°	0°	90°	0°	90°	0°	90°	0°	90°	0°	90°	0°	90°	0°	90°	0°	90°
D	45,8	54,9	64,1	73,2	76,9	82,4	91,5	101	110	128	146	4,16										

TYPE	OUTPUT TORQUE FOR SPRING RETURN IN Nm												Spring stroke		WEIGHT (Kg)										
	2,5 bar		3 bar		3,5 bar		4 bar		4,2 bar		4,5 bar		5 bar			5,5 bar		6 bar		7 bar		8 bar		90°	0°
Pressure	0°	90°	0°	90°	0°	90°	0°	90°	0°	90°	0°	90°	0°	90°	0°	90°	0°	90°	0°	90°	0°	90°	End	Start	
S 05	27,4	16,9	36,6	26	45,7	35,2	54,9	44,3	58,5	48	64	53,5	73,2	62,6							28,9	18,3	4,43		
S 06	23,8	11,1	32,9	20,3	42,1	29,4	51,2	38,6	54,9	42,2	60,4	47,7	69,5	56,9	78,7	66					34,7	22	4,48		
S 07			29,2	14,5	38,4	23,6	47,5	32,8	51,2	36,4	56,7	41,9	65,8	51,1	75	60,2	84,2	69,4			40,4	25,7	4,53		
S 08					34,7	17,9	43,9	27	47,5	30,7	53	36,2	62,2	45,3	71,3	54,5	80,5	63,6	98,8	81,9			46,2	29,3	4,59
S 09							40,2	21,2	43,9	24,9	49,4	30,4	58,5	39,5	67,7	48,7	76,8	57,8	95,1	76,1	113	94,5	52	33	4,64
S 10											45,7	24,6	54,8	33,8	64	42,9	73,1	52,1	91,5	70,4	110	88,7	57,8	36,7	4,69
S 11													51,2	28	60,3	37,1	69,5	46,3	87,8	64,6	106	82,9	63,5	40,3	4,75
S 12															56,7	31,4	65,8	40,5	84,1	58,8	102	77,1	69,3	44	4,80

Max. Pressure	Rotation	Screw stroke Adjustment	Chamber φ (mm)	Air Volume (L)		Moving Time (Sec.) (A)		Operating Temperature (°C) (B)		
				Opening	Closing	Opening	Closing	STD (standard)	HT (high temperature)	LT (low temperature)
8 bar	90° ±4° at 0° and 90°	For 1° adj. need 1/5 Turn	88	0,51	0,78	D 0,4 S 0,5	D 0,5 S 0,6	NBR "O" ring -20 to +80	FPM "O" ring -15 to +150	Silicone "O" ring -40 to +80

Notes:
 (A) The above indicated moving time of the actuator, are obtained in the following test conditions:
 (1) Room Temperature, (2) Actuator Stroke 90°, (3) Solenoid Valve with Orifice Of 4 mm and a flow capacity Qn 400 L/min., (4) Inside pipe diameter 8 mm, (5) Medium clean air, (6) Air supply pressure 5,5 bar (79,75 Psi), (7) Actuator without external resistance load. **Cautions: obviously on the field applications when one or more of the above parameter are different, the moving time will be different.**
 (B) For HT (high temperature) and LT (low temperature) services, a special Lubricant is requested. Please contact Air Torque factory.

Operating Medium:
 The operating medium must be free of dust and oil. The maximum particle size must not exceed 30µm (ISO 8573 Part1, Class5). In order to prevent water condensation and/or solidification (ice, when actuator work below 0°C), the operating medium must have a dew point equal to -20°C or, at least 10°C below the ambient temperature (ISO 8573 Part1, Class3).