



*Bathing Excellence Created By Craftsmen*



### **MODEL 116033 LADA or RADA**

#### **Smooth Wall Gelcoat**

ADA/ANSI compliant when installed according to guidelines and fully equipped with grab bars, seat, \*pressure balancing mixing valve, hand-held shower head with slide bar, vacuum breaker, and 69" hose.

\* Valve and hand-held shower head with slide bar will be provided but not mounted

#### **OTHER VARIATIONS:**

MODEL 116033 L or R – Reinforced only

MODEL 116033 LB or RB – Reinforced with (5) bars only

MODEL 116033 LBS or RBS – Reinforced with (5) bars and seat only

Custom ADA and/or Non Compliant accessories and options available upon request.

# LIBERTY LINE

*Bathing Excellence Created By Craftsmen*

## PRODUCT CUT SHEET

### MODEL 116033 LADA or RADA

#### Dimensions

WIDTH O.D.	59 ¾"
DEPTH O.D.	33"
HEIGHT O.D.	77 ¾"
Dimension Tolerance	+/- ¼"

#### Features

One piece construction  
Walls reinforced with OSB  
Smooth Walls  
Slip Resistant, Textured Bottom  
ADA Compliant

#### Approvals

We employ independent testing to certify that products meet the requirements of ANSI Z124.1.2, ASTM F462, FHA/HUD-UM-73a, ANSI 117.1, & ADA.

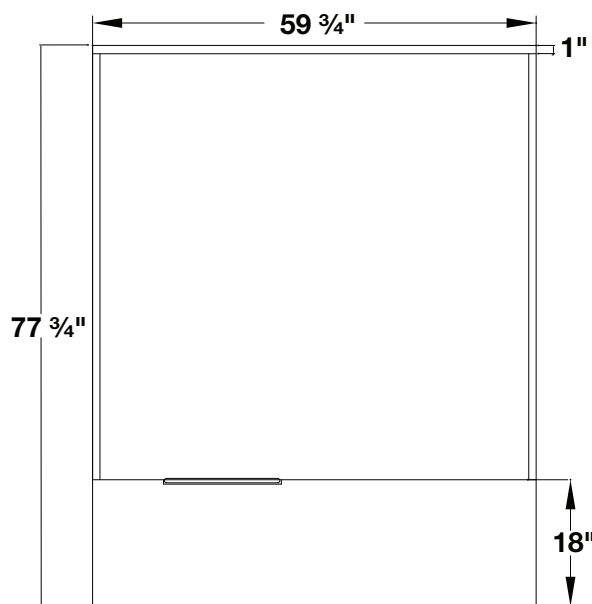
#### Installation Notes

**Refer to installation instructions included with Bathing fixture before beginning installation.**

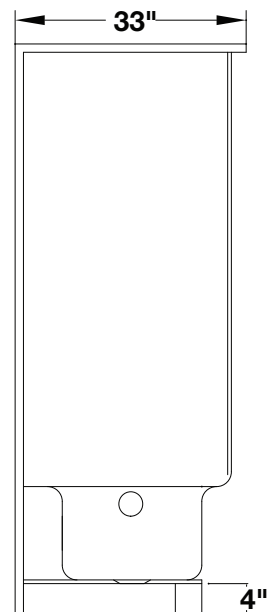
Fixture is not drilled for supply fittings. Shimming may be required to level the fixture.

#### Important

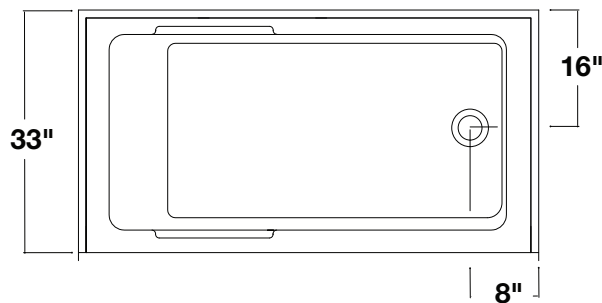
\*Valve, Hand-Held Shower & slide guide shall be provided by Manufacturer for field installation to ADA guidelines. Custom ADA &/or non-compliant accessories and options available upon request.



**FRONT VIEW**



**SIDE VIEW**

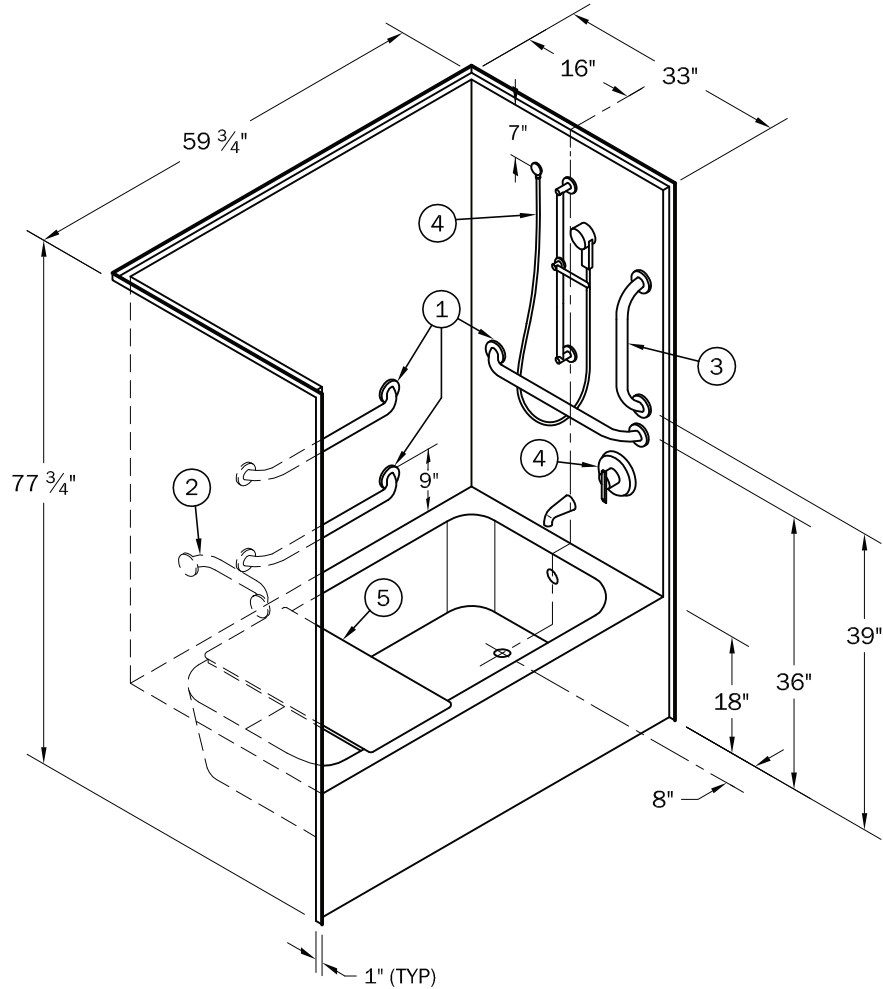


**TOP VIEW**



**1610 James P. Rodgers Drive, Valdosta, Georgia 31601, 1 (800) 343-8295  
510 East Jones Street, Wilson, NC, 27893, 1 (800) 775-8827**

## MODEL 116033 LADA or RADA



### RIGHT HAND VERSION (116033 RADA) SHOWN

(See Page 1 for mounting locations of faucet valve and hand held shower)

### RECOMMENDED ACCESSORIES

- |                   |                   |                           |           |
|-------------------|-------------------|---------------------------|-----------|
| 1. GRAB BAR (24") | PP10520S (3 REQD) | 4. VALVE & SLIDE BAR PKG. | PPVSB5000 |
| 2. GRAB BAR (12") | PP10500S          | 5. REMOVABLE SEAT         | PP11885   |
| 3. GRAB BAR (18") | PP10510S          |                           |           |

### LIST PRICE

- |                      |                                      |                |                                      |                |
|----------------------|--------------------------------------|----------------|--------------------------------------|----------------|
| \$ <u>\$1,949.00</u> | <input type="checkbox"/> 116033 LADA | Quantity _____ | <input type="checkbox"/> 116033 RADA | Quantity _____ |
|                      | (Complete as above)                  |                | (Complete as above)                  |                |
| \$ <u>\$1,451.00</u> | <input type="checkbox"/> 116033 LBS  | Quantity _____ | <input type="checkbox"/> 116033 RBS  | Quantity _____ |
|                      | (5 bars & seat only)                 |                | (5 bars & seat only)                 |                |
| \$ <u>\$1,051.00</u> | <input type="checkbox"/> 116033 LB   | Quantity _____ | <input type="checkbox"/> 116033 RB   | Quantity _____ |
|                      | (5 bars only)                        |                | (5 bars only)                        |                |

To create your own or add/change accessories use next page.



www.libertylineada.com

SIGNATURES FOR APPROVAL:

CUSTOMER NAME: \_\_\_\_\_

ORDERED BY: \_\_\_\_\_

TITLE: \_\_\_\_\_

DATE: \_\_\_\_\_

DWG NAME:  
116033

DRAWN BY:  
WB

DATE:  
5/1/12

REV:  
B

**LIST PRICE**  
**\$765.00**

☐ **116033L** QUANTITY \_\_\_\_  
(Reinforced Only)

☐ **116033R** QUANTITY \_\_\_\_  
(Reinforced Only)

<b>LIST PRICE</b>	<b>TUB OPTIONS</b>	<b>QUANTITY</b>
<u>\$ 60.00</u>	PP10520S 24" SMOOTH SS GRAB BAR	_____
<u>\$ 50.00</u>	PP10500S 12" SMOOTH SS GRAB BAR	_____
<u>\$ 56.00</u>	PP10510S 18" SMOOTH SS GRAB BAR	_____
<u>\$498.00</u>	PPVSB5000 VALVE & SLIDE BAR PACKAGE	_____
<u>\$400.00</u>	PP11885 REMOVABLE PHENOLIC SEAT (FOR GELCOAT MODELS)	_____
<u>\$460.00</u>	PP11883 PERMANENT PADDED WHITE SEAT (FOR GELCOAT MODELS)	_____
<u>\$400.00</u>	PP43000 REMOVABLE PHENOLIC SEAT (FOR ACRYLIC MODELS)	_____
<u>\$ 42.00</u>	PP1000 RECESSED STAINLESS STEEL SOAP DISH	_____
<u>\$ 60.00</u>	PP12905 STAINLESS STEEL SHOWER ROD 60" (COMES WITH RINGS AND FLANGES)	_____
<u>\$ 80.00</u>	PP12902 WHITE SHOWER CURTAIN 72" X 72"	_____
<u>\$198.00</u>	PP11910 CHROME DOME LIGHT (FOR ACRYLIC MODELS)	_____

### **COLORS**

All units come standard in white and bone.

### **GRAB BARS**

All pricing refers to smooth stainless steel grab bars, for powder coated, textured, or bar configurations not listed here, please contact Sales Department.

### **TERMS & CONDITIONS**

- 1) Purchase orders for any configuration of grab bars not contained in this literature must be accompanied by a DRAWING signed by both the customer and factory sales personnel. All sales on these orders are FINAL.  
NO RETURNS!
- 2) Authorized returns for normal products will carry a 25% Restock Charge and must be pre-approved by Sales Department. Unit will also be inspected by quality control before credit is issued.
- 3) Possession of this price list does not constitute an offer to sell. Prices and specifications may change without notice.
- 4) Acceptance, shipment, or delivery of any order is subject to approval of the credit department. Standard terms are 2%, 10 days, net 30.
- 5) We warranty all merchandise for a period of three (3) years from the date of initial acceptance of the product by the contractor or owner against defect in materials and workmanship. Please contact Sales Department for copy of actual warranty.
- 6) Allow 3 to 4 weeks for shipment of your order. Possibly longer for special orders. Anything less than truckload order may require additional charges for crating and freight. Contact Sales Department with any questions.



[www.libertylineada.com](http://www.libertylineada.com)

SIGNATURES FOR APPROVAL:

CUSTOMER NAME: \_\_\_\_\_

ORDERED BY: \_\_\_\_\_

TITLE: \_\_\_\_\_

DATE: \_\_\_\_\_