



DECOLAV®

SPEC SHEET 5235 SERIES

PRODUCT DESCRIPTION

5235 Series 15" Drawer Console

- Available in Antique White (AWH) or Mahogany (MMG) Finish
- Solid Wood Frame
- Three Drawers
- Modular Suite Component
- Satin Nickel Hardware
- Top Sold Separately

PRODUCT MEASUREMENTS

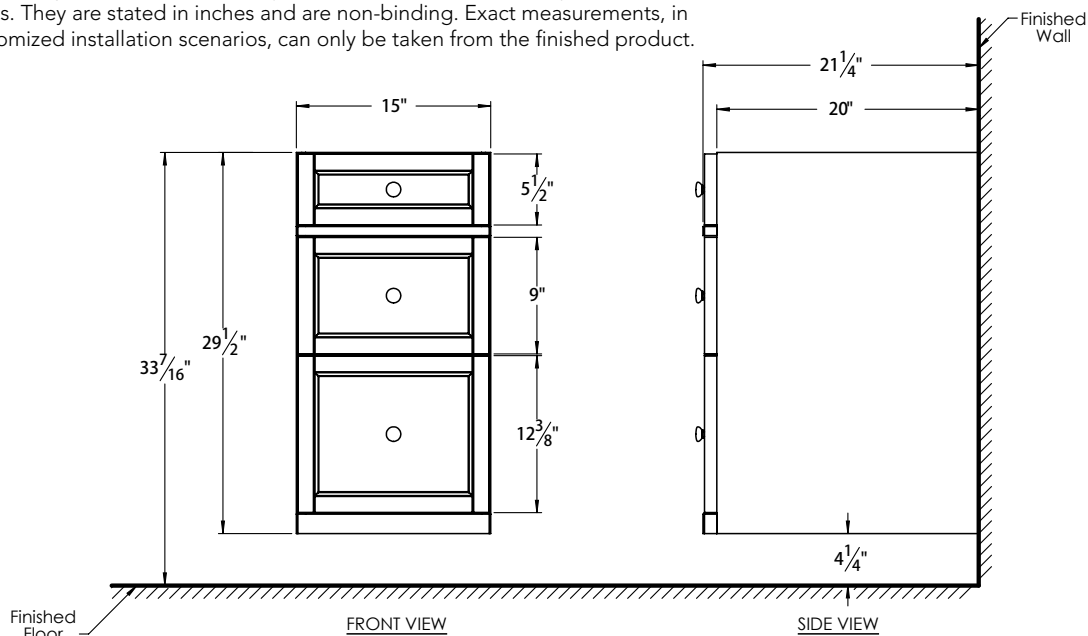
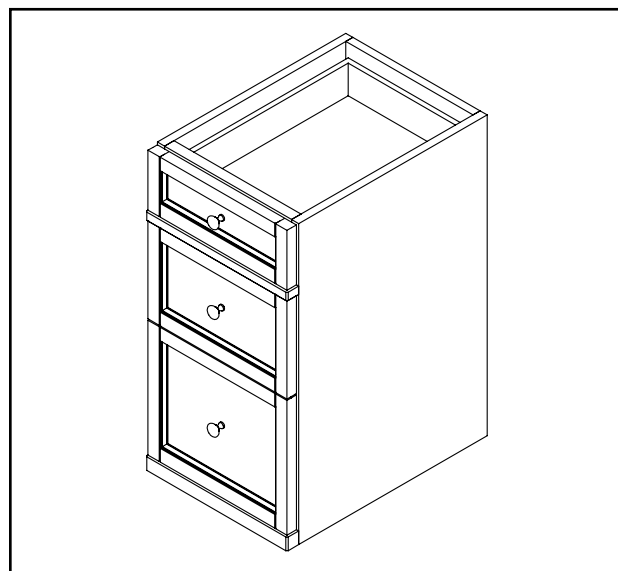
- Width: 15"
- Depth: 21.25"
- Height: 29.5"

RECOMMENDED ACCESSORIES

- 5231, 5232 or 5233 Vanity Base
- 1669 Stone Top
- 5238 Wall Cabinet
- 5234 Linen Tower
- 9709 or 9710 Wall Mirror
- 5246 Support Leg

ROUGHING-IN DIMENSIONS

Please Note: All drawings contain the necessary measurements which are subject to standard industry tolerances. They are stated in inches and are non-binding. Exact measurements, in particular for customized installation scenarios, can only be taken from the finished product.



POSSIBLE MODULAR CONFIGURATIONS

Note: Requires Vanity and/or Support Leg For Installation

