

Features

- Metal construction.
- Intended for use with Rite-Temp® or HiFlow Rite-Temp® valves.
- Sculpted lever handle.
- Includes showerhead with arm and flange, and faceplate with handle.
- 2.0 gal/min (7.6 l/min) maximum flow rate showerhead with Katalyst™ Spray Technology.

Required Accessories

K- 304-K Pressure-balancing Valve Less Stops

or

K- 304-KS Pressure-balancing Valve With Stops

Optional Accessories

88526 Thin Wall Trim Kit

1025388



Codes/Standards

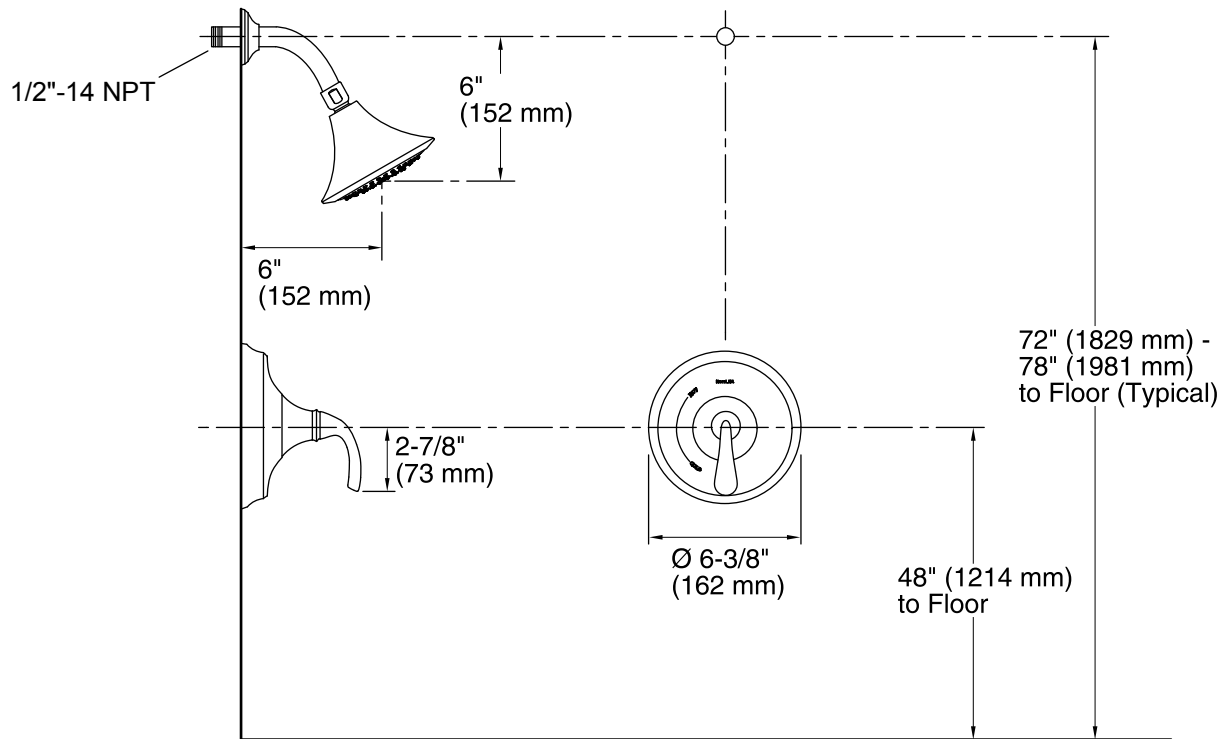
ASME A112.18.1/CSA B125.1

ASSE 1016

DOE - Energy Policy Act 1992

KOHLER® Faucet Lifetime Limited Warranty

See website for detailed warranty information.



Technical Information

All product dimensions are nominal.

Showerhead:

Rated maximum flow: 2 gal/min (7.6 l/min)

Notes

Install this product according to the installation guide.

NOTICE: Risk of product damage. Long screws, for installing trim, can damage the K-2971-KS valve. Consult the trim installation guide to verify if the thin wall installation kit (88526) is needed.

Install Rite-Temp valve according to valve installation guide.

Avoid cross-flow conditions. Do not install shut-off device on either valve outlet.

Cap shower outlet if deck-mounted spout, diverter, or handshower is connected to the spout outlet.

Install straight pipe or tube drop of 7" (178 mm) to 18" (457 mm) with single elbow between valve and wall-mount spout.