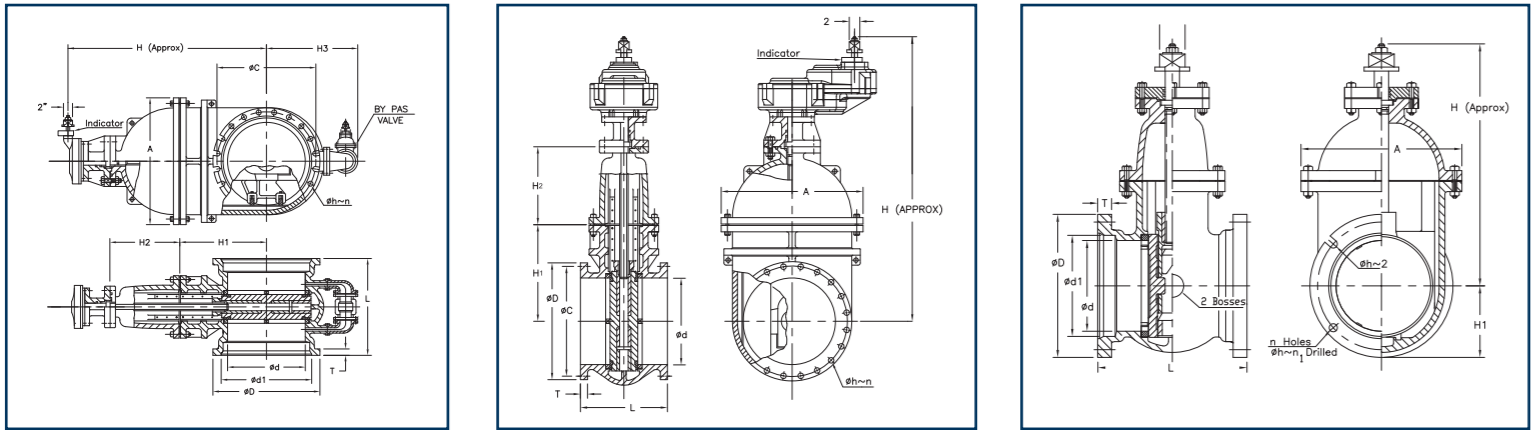
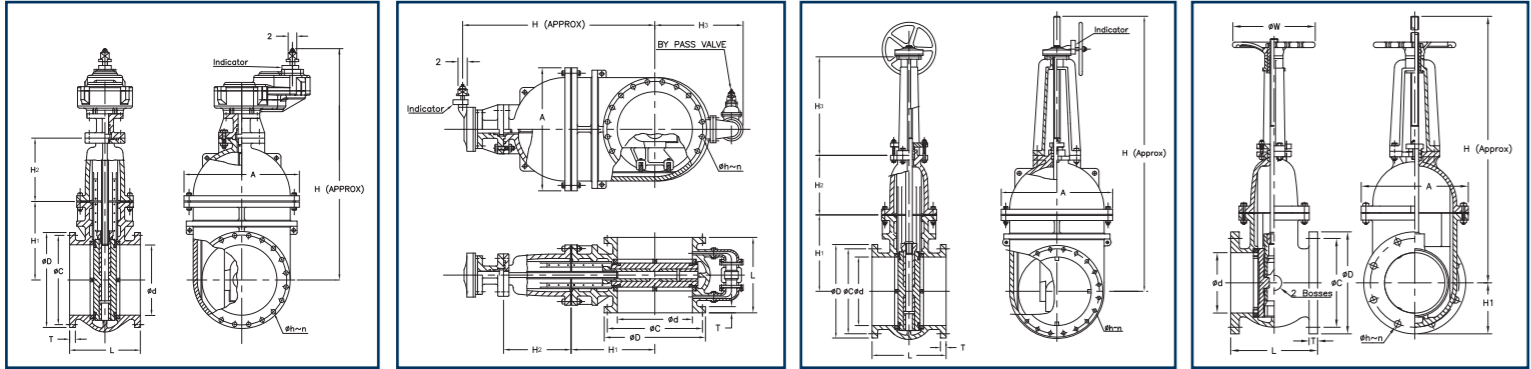


AVAILABLE END CONNECTIONS & DIMENSIONS



3" - 84" Dimensions

Size (d)	HM	BM	DM	KM	EM	M	Q	R
3"	11.38	7.50	6.19	4.06	4-6.25	13.38	6.63	8.38
4"	11.25	9.00	7.50	4.91	4-0.75	14.13	6.75	9.00
6"	11.75	11.00	9.50	7.00	6-0.75	17.88	8.00	11.75
8"	13.25	13.25	11.75	9.16	6-0.75	21.00	9.25	14.25
10"	14.50	16.63	14.00	11.20	8-0.75	24.38	10.13	16.88
12"	14.50	17.88	16.25	13.31	8-0.75	28.25	10.75	19.13

Size (d)	L	C	D	h	n	T	H	H3	A
14"	21.00	18.75	20.25	0.75	10.00	1.38	34.13	0.00	26.13
16"	21.00	21.00	23.00	0.88	12.00	1.38	46.25	26.81	26.13
18"	28.50	23.25	24.75	0.88	12.00	1.44	47.88	27.44	28.50
20"	25.75	25.50	27.00	0.88	14.00	1.50	52.25	29.38	32.06
24"	28.50	30.00	31.63	0.88	16.00	1.60	58.63	32.81	37.63
30"	38.50	36.88	39.13	1.13	20.00	1.81	71.00	35.88	44.13
36"	42.00	48.75	46.00	1.13	24.00	2.00	81.75	39.38	52.25
42"	44.00	50.63	53.13	1.38	28.00	2.00	101.00	44.63	58.50
48"	48.00	67.50	60.00	1.38	32.00	2.00	121.00	52.38	69.00
54"	46.00	62.75	66.25	1.75	44.00	3.00	140.00	57.62	77.00
60"	36.75	69.25	73.00	1.75	52.00	3.13	138.43	60.25	84.63
66"	37.25	76.00	80.00	1.75	52.00	3.38	144.43	64.75	98.25
72"	49.00	82.50	86.50	1.75	52.00	3.50	164.43	64.75	98.25
84"	52.00	95.50	99.75	2.00	64.00	3.88	196.13	67.88	124.00

* Dimensional data are subject to change without notice. Contact American R/D for most current data.

American R/D In Plant Products

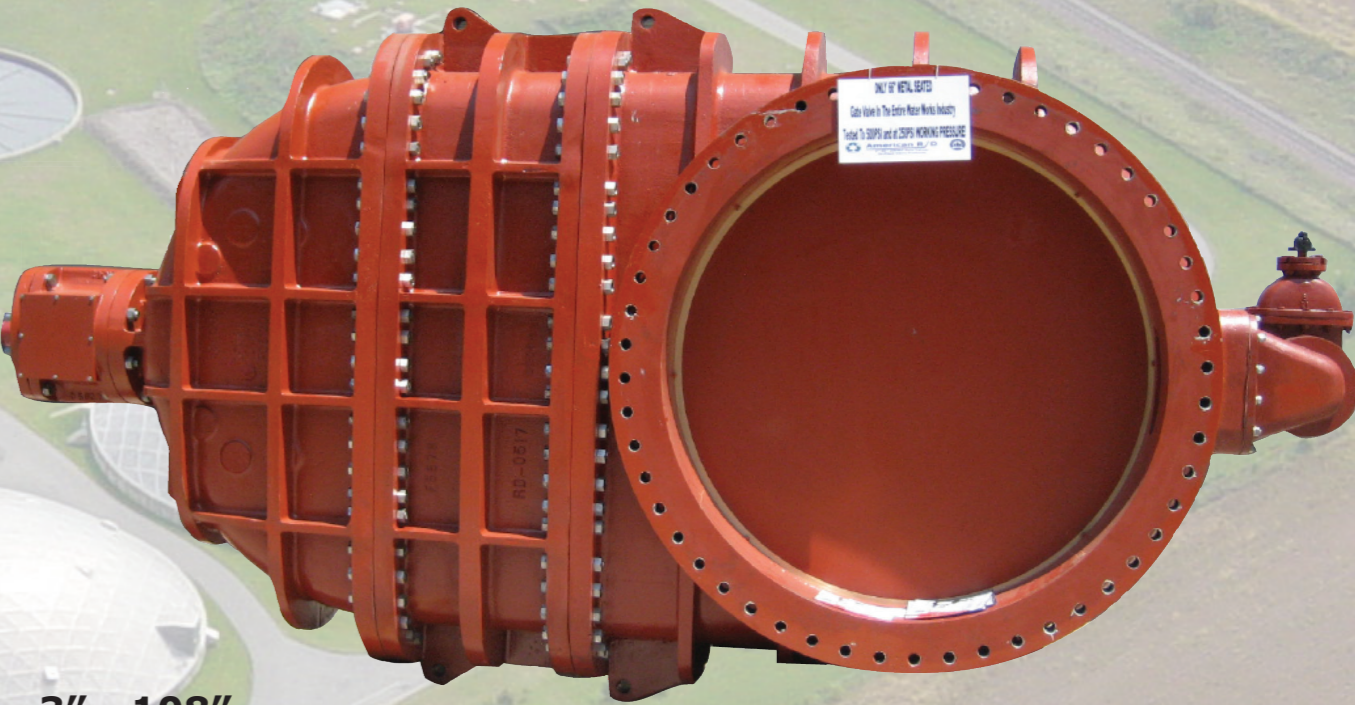
American R/D

Inplant Valves

A Division of McWane Co., Inc.

- 3"-108" Rotating-Revolving Disc Gate Valves
- 2"-108" Solid Wedge Gate Valves
- 2"-54" Resilient Wedge Gate Valves
- 2"-36" Swing Check Valves
- 3"-36" Eccentric Plug Valves
- 4"-30" Flap Valves
- 4"-30" Shear Gates
- 4"-16" Sluice Gates
- 4"-30" Mud Valves
- Pressure Relief Valves- Wall & Floor
- In — Plant Accessories
 - Chainwheels
 - Floor stands
 - Stem Guides
 - Extension Stems
 - Actuators

ROTATING DISC GATE VALVE C-500



3" - 108"
AWWA C-500
Rated up to 250psi
Ductile Iron Construction
Full water way for wet
tapping service applications

For dimensions and drawings of our 3"- 108"
Rotating Disc Gate valve, please contact
American R/D at (256) 831-2236.

American R/D
1800 Greenbrier Dear Rd.
Anniston, AL 36207
Phone 256-831-2236
Fax 256-831-2884
A Division of McWane, Incorporated
www.american-rd.com



SERIES 52
SERIES 59
SERIES 55
SERIES 525

ROTATING DISC GATE VALVE¹

The American R/D Series 50 line of double rotating disc gate valves has been utilized successfully since 1908 in water/wastewater treatment plants and water lines all over the United States. If you are looking for an extended life valve, this valve should be your choice for generations of service.

American R/D Revolving Disc gate valves clean themselves with every operation. Deposits are removed in travel, so nothing builds up on the seating surfaces that could cause leakage. Also the discs are free of pockets that could collect solids. The revolving action of the discs creates a different seating position each time the valve is closed. Uneven or excessive wear is prevented, so the sealing components remain smooth and operational years longer without maintenance or replacement.

And because the discs revolve, they cannot foul on the body guides.

The superior American R/D design provides independent wedging and seating action for smoother valve opening and closing with less operating force. Internal parts are both interchangeable and reversible, ensuring simple and inexpensive maintenance if ever required.

These advantages, along with uncompromising quality control assure that American R/D revolving disc gate valves will be ideal for water and wastewater applications. American R/D's unique design features make these valves fully capable of taking on services no other metal-seated gate valve can handle. So for reliability, versatility and long-life, specify American R/D revolving disc gate valves.

FEATURES

- Applications: Clean water, raw water, wastewater
- Complies with AWWA C-500
- NFS-61 approved
- Size range 3" through 108"
- Working pressures up to 250psi
- Shell test up to 500psi
- Full body ductile iron ASTM A-536
- Stainless steel stems 304 or 316 ASTM A-276.
- B62-Low Zinc Bronze Body & seat rings
- By-passes standard 16" & larger

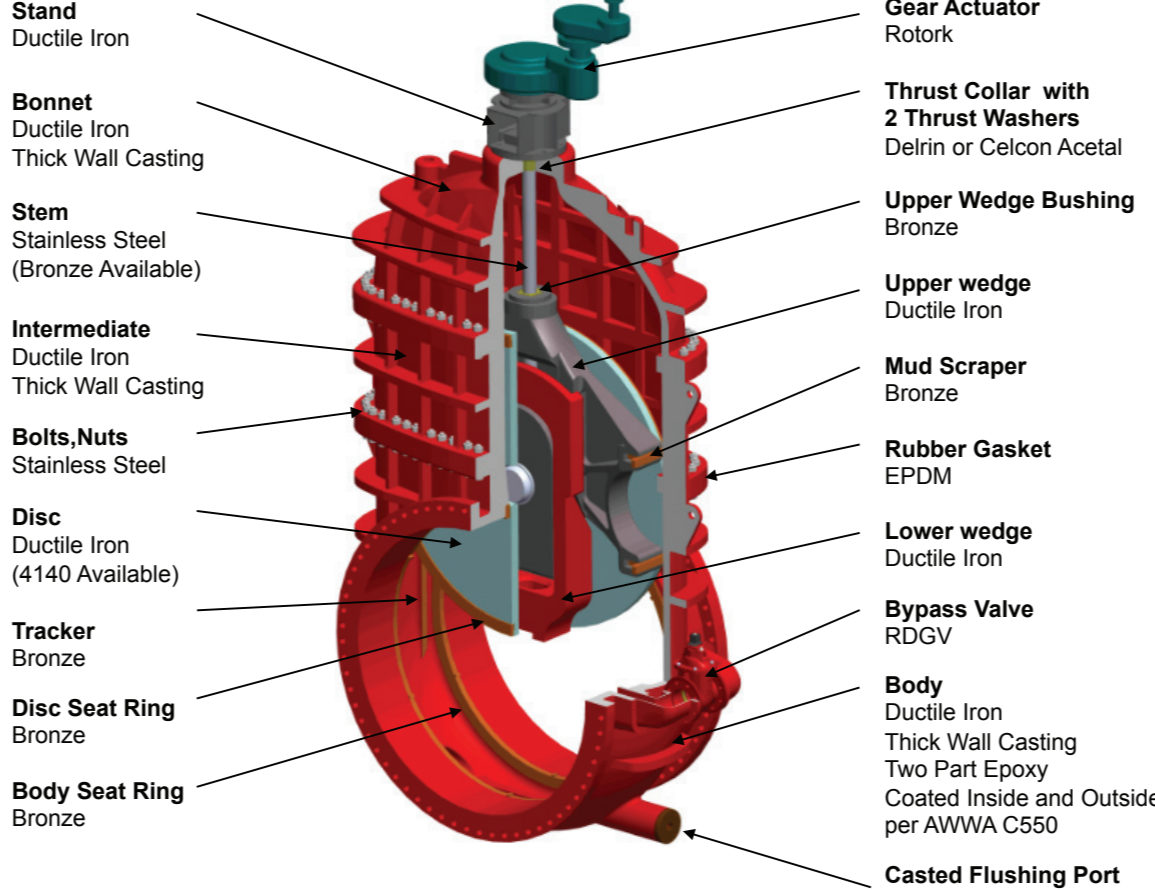


- Rollers, tracks & scrapers standard 14" & larger
- Disc-face tracking available or horizontal-flat installations
- Rotating/revolving disc design
- Self-cleaning disc seats
- Non-rising stem or OS&Y configurations
- Internal & external coating suitable for potable water and complying with AWWA C550.
- For vertical installations integrally casted flushing ports available

¹ Rotating Disc Valve History - 1900 The Darling Pump Company in Williamsport, PA developed a revolutionary (parallel seat, revolving disc) gate valve for use in the oil field and in waterworks...Darling sales skyrocketed. 1917 Company is renamed Darling Valve & Mfg. 1969 Darling Valve was purchased by American Cast Iron Pipe Company and relocated to Birmingham, AL 1997 The American Darling parallel seat revolving disc gate valve is sold to American R/D LLC, Danbury, CT. Thousands of revolving disc gate valves have been sold globally. 2007 McWane acquires American R/D LLC and relocates the business to Anniston, AL

ROTATING DISC GATE VALVE

SERIES 50



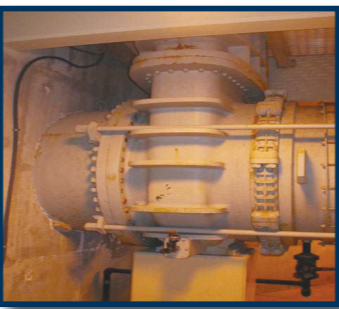
Non-Rising Stem Valve (NRS)

No Links Or Auxiliary Means Are Necessary To Hold Parts In Position.



Discs And Wedges (Shown Separated)

Discs And Wedges (Shown Assembled)



SPECIFICATIONS - SERIES 50

DOUBLE ROTATING-REVOLVING DISC GATE VALVES 3" TO 108"

1. Manufacturers:
 - a. American R/D
2. Provide valve in compliance with AWWA C500 (latest edition).
3. Materials:
 - a. Valve Body, Bonnet, Discs, Wedges: Ductile Iron ASTM-A536 (65/45/12). 4" and smaller valves may have ASTM B62 low zinc bronze discs and wedges. Valves 108" High strength steel disc ASTM 4140
 - b. Provide valve body and bonnet of ductile iron full body thickness
 - c. Scraper, Stem Nut, Disc and Body Seat Rings: B62-Low Zinc Bronze.
 - d. Ductile Iron Wedge Bearing Surfaces: Type 316 stainless steel ASTM-A276
 - e. Stem: Type 316 or Type 304 Stainless Steel ASTM-A276. Valves 108" stem type 630 stainless steel
 - f. Valve Bolts and Nuts: Type ASTM Grade 304 or 316 Stainless Steel Bolts and Nuts as specified by engineer
4. Valve Construction:
 - a. Rated Working Pressure:
 - i. Valves 3" [75 mm] through 54-in [1400 mm]: 250 psi [17 bar]
 - ii. Valves 60-in [1500 mm] through 66-in 150 psi :
 - iii. Valves 72" 100 psi
 - iv. Valves 108" 150 psi
5. Exposed valves: Flanged OS&Y valves. Face-to-face dimensions to comply with ANSI B16.10, flanges to comply with ANSI B16.1.
 - a. Provide conventional packing in OS&Y valves.
 - b. Provide Type 316 or Type 304 stainless steel bolts and bronze nuts for stuffing box follower.
6. Buried Valves: NRS with gear operator.
 - a. Mechanical joint
 - b. Provide conventional packing or double o-rings in non-rising stem valves
7. Where specified and indicated provide a bypass valve bolted to bottom or side of main valve body. Provide valve type and material as specified and indicated.
8. Provide valve body with two integrally cast flushing ports for gate valves sized 14" and larger for valve in an upright installation.
9. Provide two 360 degree ductile iron rotating discs, interchangeable and field replaceable without removal of valve body from the pipeline.
10. Provide self-adjusting bronze scrapers to allow valve to be mounted in the horizontal position or angle as indicated from vertical or horizontal center lines.
11. Provide Type 304 or Type 316 Stainless Steel stem with an integrally cast thrust collar
12. When required, provide each valve body with integrally cast electric motor mounting pads
13. Provide a full port body design with full port completely through the entire valve body and seat rings to allow for pigging of pipelines.
14. Valve in full open position shall provide a clear and unobstructed water way.
15. Provide valve body guides and tracks with a bronze bearing surface throughout the entire travel of the bottom side of a horizontally installed valve.
 - a. Guide contact area: ASTM B21 Bronze
16. Provide valve design to allow complete re-packing of valve stem under pressure when the valve is in the full open position.
17. End connections, provide type as indicated and specified:
 - a. Flanged ANSI B.16.1 Class 125 or Class 250 as required
 - b. Grooved
 - c. Mechanical Joint.
18. Provide all discs and wedges free of any type pockets, linkages and pins.
19. Provide geared operators for all valves 14" [350mm] and larger.
 - a. Gearing: Steel with enclosed cases.
 - b. Provide spur or bevel gearing as determined by valve application and orientation
 - c. Provide buried valves with totally enclosed gear cases.
20. Chainwheels: Provide where required as specified herein.
21. Testing
 - a. Factory test each valve per AWWA C-500 (latest Revision):
22. Provide a two part NSF-61 approved liquid epoxy on the exterior and interior of valve
23. Manufacturer shall have at least 10 years water works or treatment plant experience.

Visit our Website: www.american-rd.com
2" - 108" AWWA Gate Valves
A Division of McWane, Inc.