



## Gilded Meadow™ Conical Bell®

Above-counter/Wall-mount Bathroom Sink  
**K-45922-DE**

### Features

- Vitreous china.
- Above-counter or wall-mount.
- Round basin.
- Without overflow.
- No faucet holes; requires wall- or counter-mount faucet.
- KOHLER Artist Edition.
- Gilded Meadow™ design on Conical Bell®.
- Coordinates with other products with the Gilded Meadow design.
- 16-1/4" (413 mm) diameter

### Recommended Accessories

K- 7114 Pop-Up Drain  
K- 7129 Drain  
K- 9018 P-Trap  
K- 9655 Wall-mount Bracket

### Components

Additional included component/s: Adjustable linkage.



ADA	CSA B651	OBC
-----	----------	-----

### Codes/Standards


ASME A112.19.2/CSA B45.1  
ADA  
ICC/ANSI A117.1  
CSA B651  
OBC

### KOHLER® One-Year Limited Warranty

See website for detailed warranty information.

### Available Color/Finishes

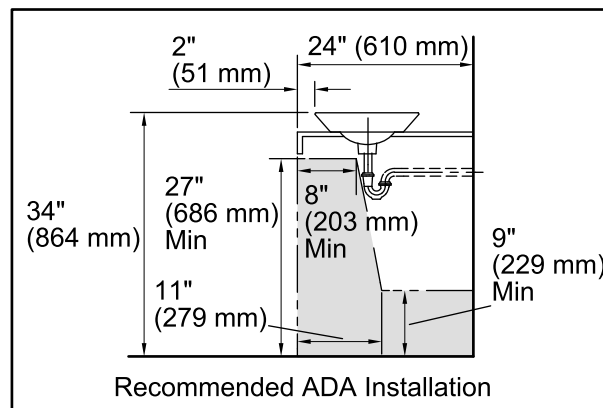
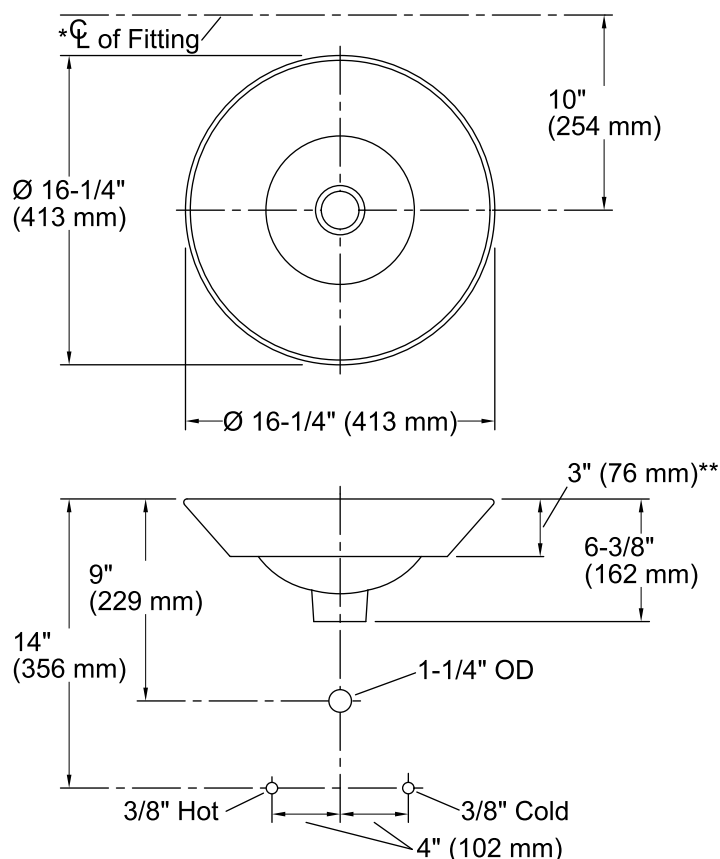
*Color tiles intended for reference only.*

Color	Code	Description
	K5	Translucent Cashmere



## Gilded Meadow™ Conical Bell®

Above-counter/Wall-mount Bathroom Sink  
**K-45922-DE**



### Technical Information

All product dimensions are nominal.

Bowl configuration: Single

Installation: Above-counter, Wall-mount

Bowl area  
Diameter: 15-7/8" (403 mm)  
Water depth: 4-1/4" (108 mm)

Drain hole: 1-3/4" (44 mm)

Template: Above-counter, 1002980-7, required, included

### Notes

Install this product according to the installation guide.

Product does not have an overflow.

\*Spout must be 5" (127 mm) long (min) for adequate clearance into the bathroom sink when installed with centerline as shown.

NOTICE: Countertop manufacturer or cutter must use the cut-out template provided with the product, or a current one provided by Kohler Co. (call 1-800-4-KOHLER). Kohler Co. is not responsible for cut-out errors when the incorrect cut-out template is used.

ADA, OBC, CSA B651 compliant when installed to the specific requirements of these regulations.