



Halsey Taylor®

Satisfying Thirsts Since 1912

Models: ☐ HTHB-HVRGRN8BL-WF

GENERAL

Complete water station including HydroBoost™ bottle filling station and filtered HVRGRN8BL water cooler.

HVRGRN HIGH-EFFICIENCY WATER COOLER

GreenSpec® Listed, energy and water efficient, bi-level water cooler. Self-contained, wall-mounted, electric refrigerated model. One-piece piece chrome-plated vandal-resistant water conservation bubbler with integral hood. Automatic stream height regulator is located inside unit to prevent tampering. A constant stream height is automatically maintained under line pressures that vary from 20 to 105 psi. Includes self-closing, light touch front pushbutton actuation. Non-corrosive Type 300 series stainless steel cooler top with satin finish resists stains.

HYDROBOOST™ BOTTLE FILLING STATION

Sensor-activated enhanced with user interface graphics. Quick fill rate is 1.5 gallons per minute on refrigerated model and 1.1 gallons per minute on ambient model. Laminar flow provides a clean fill with minimal splash and easy maintenance. Equipped with an automatic 20-second shut-off timer. Key plastic components are integrated with silver ion anti-microbial protection to inhibit growth of mold and mildew.

LEAD REDUCTION FILTER WITH FILTER LIFE INDICATOR

Equipped with the HWF3000 WaterSentry® Plus Filter. Quick-Disconnect, ¼ turn installation and automatic inlet shut-off valve that closes when filter is removed. High-grade filter is made with activated carbon and patented ATS lead-removal media. Certified to NSF/ANSI 42 for Chlorine-Class 1, Particulate-Class 1 and Taste and Odor and NSF/ANSI 53 for Lead Reduction.

Green, yellow and red LEDs visually indicate when filter maintenance is required. For service replacement, order as 55898C (single) or 55898C_3PK (three filters).

GREEN COUNTER™

Visually displays count of plastic bottles saved from the landfills.

INLET STRAINER

Easily cleaned in-line strainer screen traps particles of 140 microns or larger before they enter the waterway.

TEMPERATURE CONTROL

Positive sensing thermostat for controlling temperature of storage tank water. Factory set at 50°F adjustable $\pm 5^\circ\text{F}$.

REFRIGERATION SYSTEM

Unit provides 8GPH of 50°F drinking water at 90°F ambient air and 80°F inlet water. Hermetically sealed, positive start compressor with lifetime lubrication and built-in overload protection, efficient capillary sizing, large capacity dryer-strainer and self-lubricated fan cools copper/ aluminum condenser. R-134a refrigerant. Protected by Halsey Taylor's Limited Warranty.

Trap and service stop not included.

NOTE: Continued product improvement makes specification sheets subject to change without notice.

HYDROBOOST™

HVRGRN Coolers with Bottle Filler



Cooler panels available in Stainless Steel

SUGGESTED SPECIFICATION

Model HTHB-HVRGRN8BLWF shall deliver 8GPH 50°F drinking water at 90°F ambient air and 80°F inlet water. Shall include the WaterSentry® Plus filter, certified to NSF/ANSI 42 and 53 for lead reduction, with visual monitor to indicate when filter replacement is necessary. Bottle Filler shall be sensor-actuated with auto shut-off timer and bottle counter. Shall provide 1.1-1.5 GPM with laminar flow for minimal splash. Shall include anti-microbial protected plastic components. Cooler shall have stainless steel cabinet and basin. Cooler shall have removable drain strainer. Shall have vandal-resistant bubbler and front pushbutton activation. Shall comply with ADA standards, U.L. Listed and be certified to lead-free compliance including NSF/ANSI 61- Annex G, AB1953

JOB NAME: _____

ENGINEER/CONTRACTOR NAME: _____

APPROVAL: _____

DATE: _____



HTHB-HVRGRN8BL-WF

Filtered Bi-Level HVRGRN Cooler with HydroBoost™ Bottle Filler

(CONTINUED)

OPERATING PRESSURES

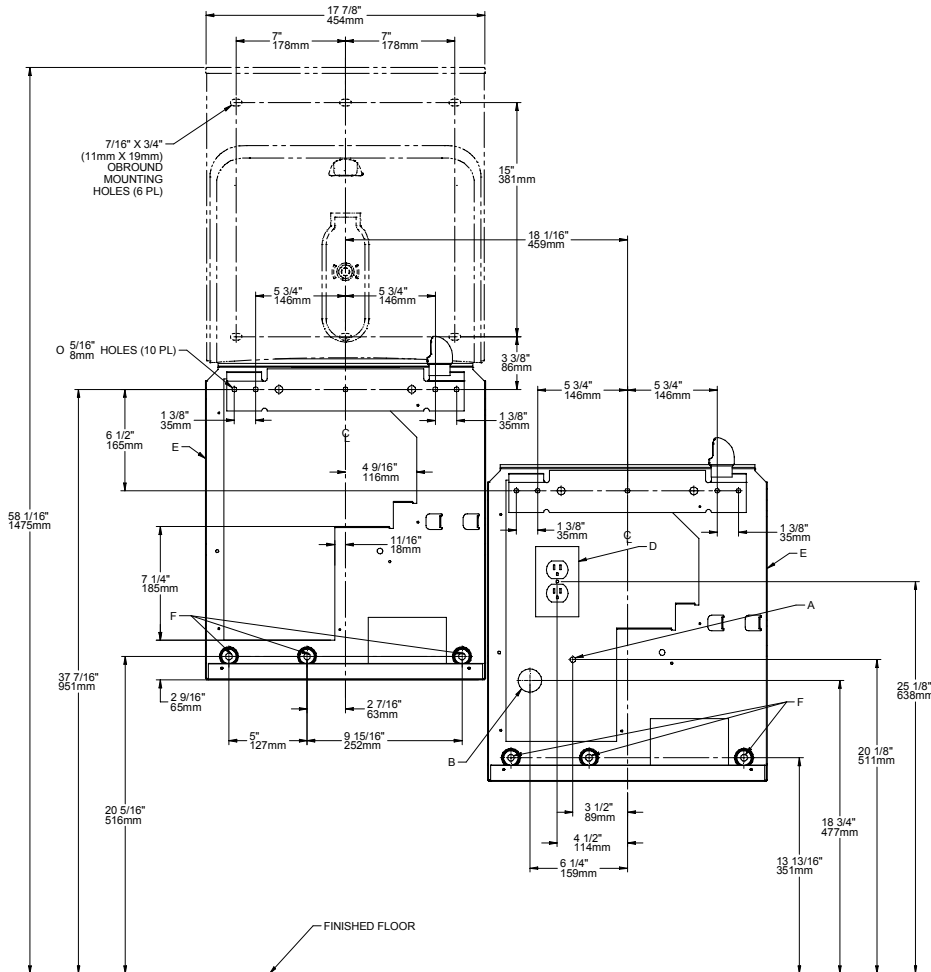
Supply water – 105 psi maximum

Minimum 40 psi supply line pressure required in special circumstances when both units are in use simultaneously to ensure adequate flow.

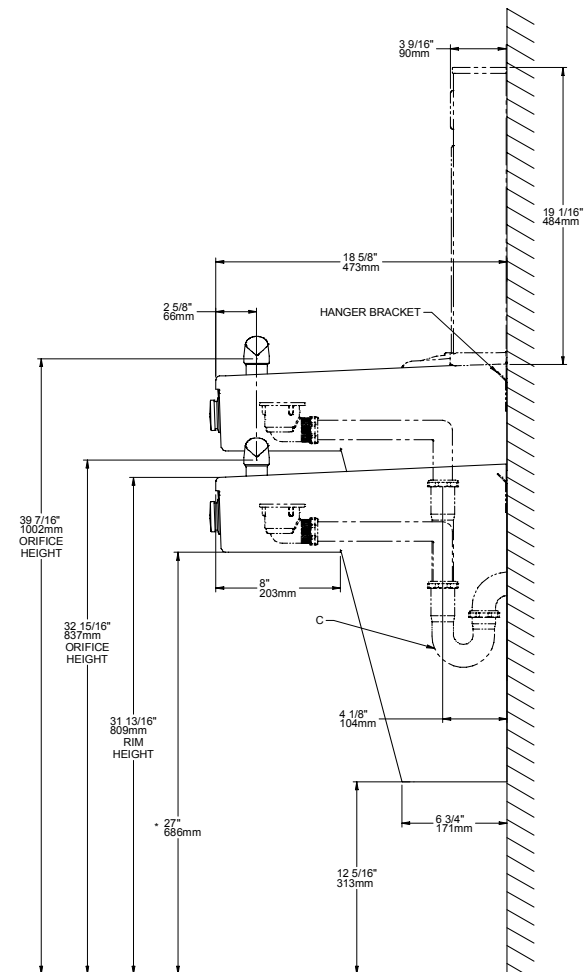
ELECTRICAL

HydroBoost Station equipped with plug-in, 3-wire ground type service cord. Install 120-volt receptacle, rated at 15-amp minimum, to receive 3-wire parallel blade grounding type male plug.

FRONT VIEW



SIDE VIEW



REDUCE HEIGHT BY 3" FOR INSTALLATION OF CHILDRENS ADA COOLER

LEGEND:

A = RECOMMENDED WATER SUPPLY LOCATION 3/8" O.D. UNPLATED COPPER TUBE CONNECT STUB 1-1/2" (38mm)

OUT FROM WALL. SHUT OFF VALVE NOT FURNISHED.

B = RECOMMENDED LOCATION FOR WASTE OUTLET 1-1/4" O.D. DRAIN.

C = 1-1/2" TRAP NOT FURNISHED.

D = ELECTRICAL SUPPLY (3) WIRE RECESSED BOX, DUPLEX OUTLET REQUIRED.

E = INSURE PROPER VENTILATION BY MAINTAINING 6" (152mm) MIN. CLEARANCE FROM CABINET LOUVER TO WALL.

F = 7/16" BOLT HOLES FOR FASTENING UNITS TO WALL.

Halsey Taylor®