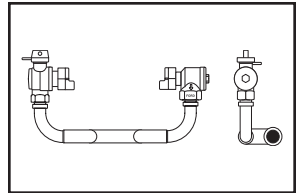
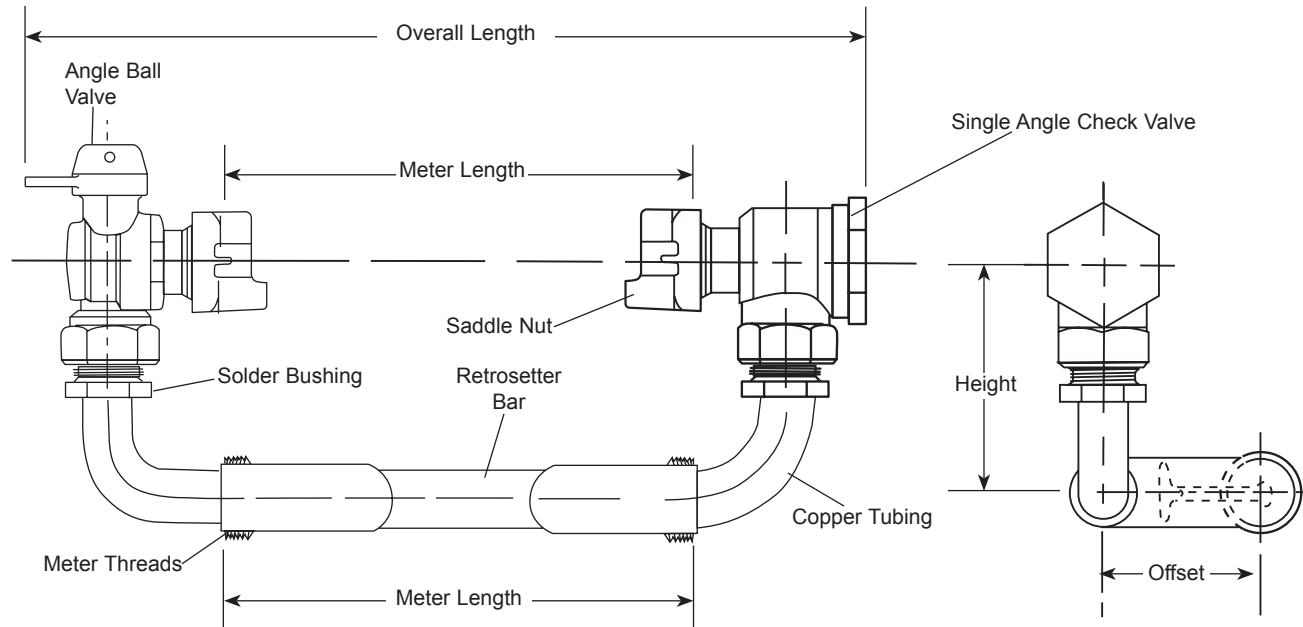


SUBMITTAL INFORMATION

Retrosetters - (RETRO-xCVBH-NL style)



ANGLE BALL VALVE INLET BY ANGLE SINGLE CHECK VALVE OUTLET



Meter Size	Meter Length	Overall Length	Approx. Height	Offset	Approx. Wt. Lbs.	Catalog Number	✓ Submitted Item(s)
5/8"	7-1/2"	13-3/8"	3-1/2"	2-1/2"	4.8	RETRO-1CVBH-NL	
5/8"x3/4"	7-1/2"	13-3/8"	3-1/2"	2-1/2"	5.1	RETRO-2CVBH-NL	
1"	10-1/2"	17-7/16"	5"	3-3/8"	9.1	*RETRO-4CVBH-NL	

FEATURES

- All brass that comes in contact with potable water conforms to AWWA Standard C800 (UNS C89833)
- The product has the letters "NL" cast into the body for proper identification
- Brass components that do not come in contact with potable water conform to AWWA Standard C800 (ASTM B-62 and ASTM B584, UNS C83600-85-5-5-5)
- Style "C" Retrosetter offsets and raises the meter from the centerline of the service.
- Saddle Nuts hold the meter in place for tightening.
- All Ford Retrosetters are assembled with lead-free solder.
- Ford Retrosetters are furnished with four rubber gaskets, one for each meter nut and two for the bottom bar.
- Conforms to AWWA C700 for Meter Threads.

The Ford Meter Box Company considers the information in this submittal form to be correct at the time of publication. Item and option availability, including specifications, are subject to change without notice. Please verify that your product information is current.



The Ford Meter Box Company, Inc.

P.O. Box 443, Wabash, Indiana U.S.A. 46992-0443

Phone: 260-563-3171 / Fax: 800-826-3487

Overseas Fax: 260-563-0167

<http://www.fordmeterbox.com>

02/25/13

Submitted By: