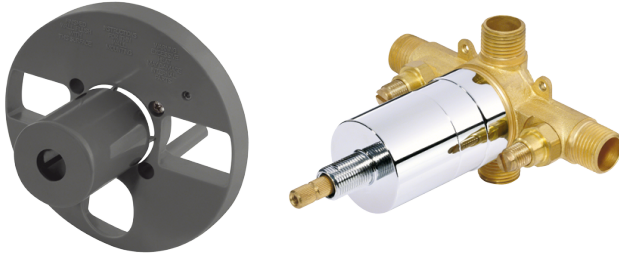


SPECIFICATIONS

SINGLE CONTROL PRESSURE BALANCE MIXING VALVE WITH SCREWDRIVER STOPS



FEATURES

- Washerless cartridge
- With high temperature limit adjustment
- Combination 1/2" copper sweat/IPS 4-port hook up
- Back-to-back installation feature
- Mounting bracket & plaster guard included
- Valve will perform at ASSE 1016 standards when flow rate is restricted to 2.0gpm

FINISHES AVAILABLE

- Rough Brass

CODES/STANDARDS



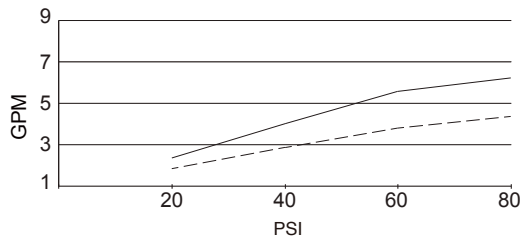
- UPC/cUPC

MEETS ASME
A112.18.1M/ A112.18.1

- ASME A112.18.1M/ A112.18.1

MEETS ASSE
1016

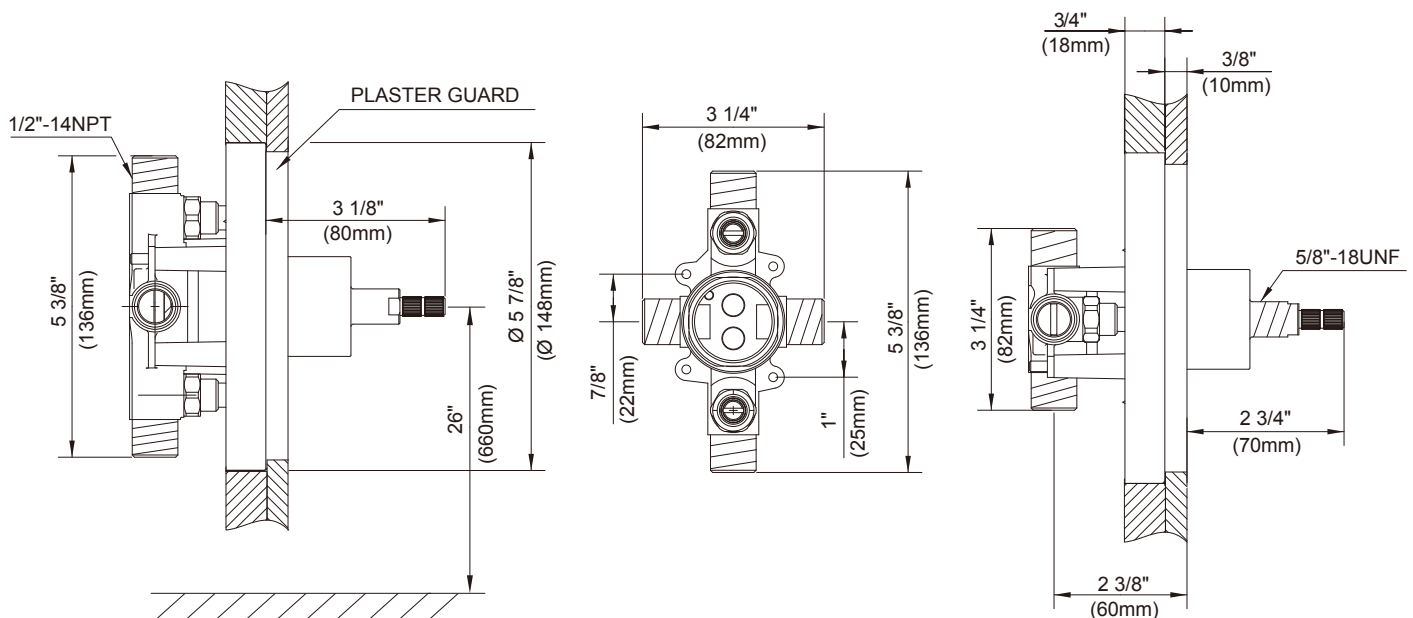
- ASSE 1016



—— Hot and Cold Mixed Flow Rate
- - - Full-Hot Flow Rate

WARRANTY

Danze products are covered by a manufacturer's lifetime limited warranty for manufacturing defects.



Submittal Information:

Job Name: _____

Location: _____

Contractor: _____

Contact #: _____