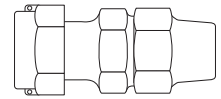
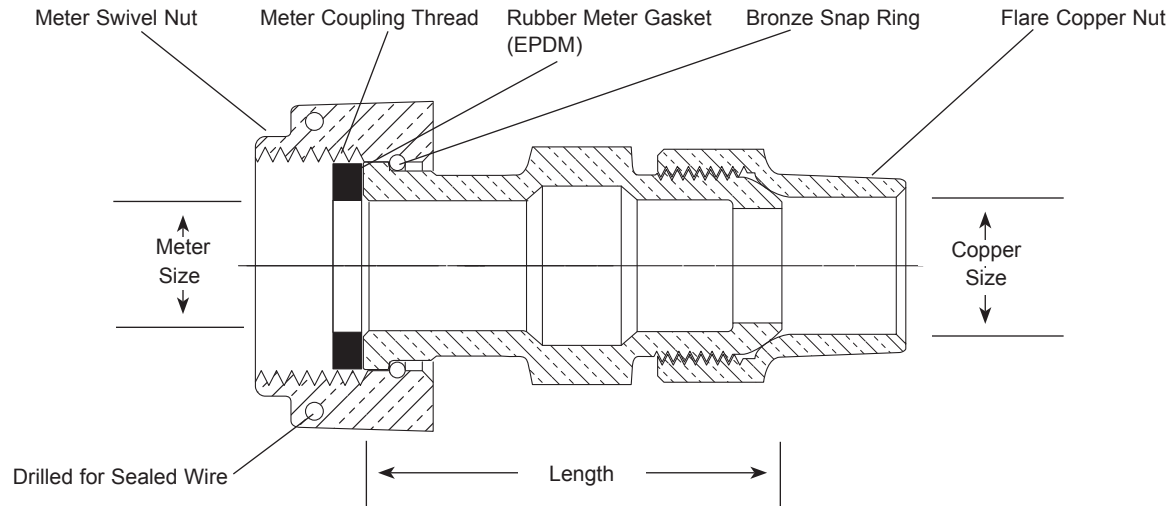


SUBMITTAL INFORMATION

Straight Meter Coupling - (C32-xx-NL style)



METER SWIVEL NUT BY FLARE COPPER



METER SIZE	FLARE COPPER SIZE	LENGTH	APPROX. Wt. LBS	PART NUMBER	✓ SUBMITTED ITEM(S)
5/8"	3/4"	2-3/16"	.8	C32-13-NL	
5/8"x3/4" and 3/4"	3/4"	2-3/16"	1.0	C32-23-NL	
1"	1"	2-1/2"	1.5	C32-44-NL	

FEATURES

- All brass that comes in contact with potable water conforms to AWWA Standard C800 (UNS C89833)
- The product has the letters "NL" cast into the body for proper identification
- Brass components that do not come in contact with potable water conform to AWWA Standard C800 (ASTM B-62 and ASTM B584, UNS C893600-85-5-5-5)
- Conforms to AWWA C700 for Meter Threads
- Body design provides wrench flats to facilitate installation

The Ford Meter Box Company considers the information in this submittal form to be correct at the time of publication. Item and option availability, including specifications, are subject to change without notice. Please verify that your product information is current.



The Ford Meter Box Company, Inc.

P.O. Box 443, Wabash, Indiana U.S.A. 46992-0443

Phone: 260-563-3171 / Fax: 800-826-3487

Overseas Fax: 260-563-0167

<http://www.fordmeterbox.com>

02/28/13

Submitted By: