

For Residential and Commercial Applications

Job Name _____
 Job Location _____
 Engineer _____
 Approval _____

Contractor _____
 Approval _____
 Contractor's P.O. No. _____
 Representative _____

LEAD FREE*

Series LFFBV-4B, LFFBVS-4B

2-Piece, Full Port, Brass Ball Valves

Sizes: 1/4" – 3"

Series LFFBV-4B, LFFBVS-4B 2-Piece, Full Port, Brass Ball Valves are suitable for a full range of liquids and gases in residential and commercial applications.

These valves feature an adjustable packing for longer service life, a bottom loaded blow-out proof stem for safety, a fluorocarbon elastomer stem O-ring to prevent stem leaking at installation, and are rated to 600psi WOG/150psi WSP 1/4"– 3".

Features

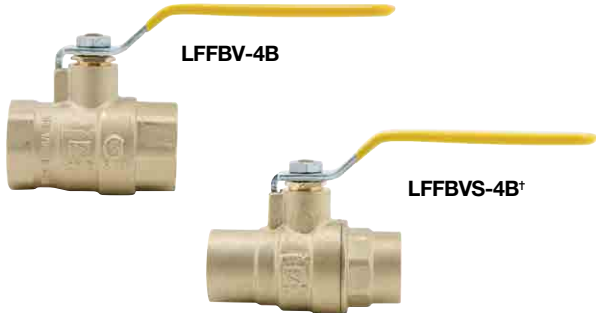
- CSA approved threaded valves only 1/4" – 3"
- Certified to NSF/ANSI Standard 61/8
- Metal-to-metal adapter body seal to eliminate adapter leaks after soldering
- Adjustable stem packing gland provides longer service life
- Bottom loaded blowout proof stem
- PTFE stem packing seal and seats
- Machined chrome plated Lead Free brass ball for sizes 1/4" - 1" and stainless steel for sizes 1 1/4" - 3"
- Complies with MSS-SP-110

Models

LFFBV-4B 1/4" – 3" threaded end connections
 LFFBVS-4B 1/2" – 3" solder end connections*

Specifications

Approved valves shall be 2-piece full port design constructed of a forged Lead Free brass body and end adapter. Seats and stem packing shall be PTFE. Stem to be bottom-loaded, blowout proof design with a fluorocarbon elastomer O-ring to prevent stem leakage. Valves required to have an adjustable packing gland and 1/2" - 1" chromed plated Lead Free brass ball and stainless steel for 1 1/4" - 3". Threaded valves 1/4" – 2" shall be CSA approved to 1/2 psig and 5 psig and certified to NSF/ANSI Standard 61/8. Solder valves also required to be certified to NSF/ANSI Standard 61/8. Valve sizes 1/4" – 2" pressure rated to 600 psi WOG and 150 psi WSP. Sizes 2 1/2" - 3" pressure rated to 400 psi WOG and 125psi WSP. Valves specified are Watts Series LFFBV-4B or LFFBVS-4B.



Approvals

1/4" – 3" FBV-4
 1/2" – 3" FBVS-4
 Certified to NSF/ANSI Standard 61/8



Gas Approvals (Threaded Valves Only)

1/4" – 2"
 CSA
 1/2 psig, 5 psig
 @ -40°F to 125°F



Pressure – Temperature

Temperature Range: -40°F to 400°F (-40°C to 204°C)
 Pressure Rating: 1/4"– 3"
 600psi (41.4 bar) WOG non-shock
 150psi (10.3 bar) WSP
 2 1/2"– 3"
 400psi (27) WOG non-shock
 125psi WSP

Installation Information

Apply heat with the flame directed **AWAY** from the center of the valve body. Excessive heat can harm the seats. After soldering, the packing nut may have to be tightened.

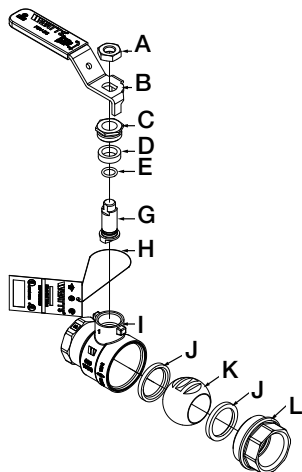
*This valve is designed to be soft soldered into lines without disassembly, using a low temperature solder to 420°F (216°C). Higher temperature solders may damage the seat material.

*The wetted surface of this product contacted by consumable water contains less than 0.25% of lead by weight.

Watts product specifications in U.S. customary units and metric are approximate and are provided for reference only. For precise measurements, please contact Watts Technical Service. Watts reserves the right to change or modify product design, construction, specifications, or materials without prior notice and without incurring any obligation to make such changes and modifications on Watts products previously or subsequently sold.

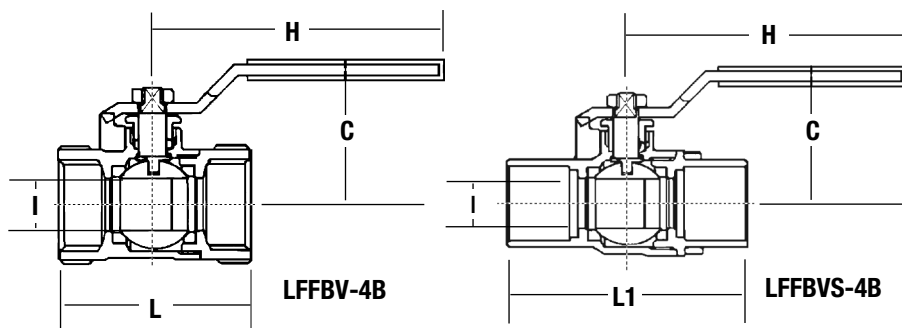


Materials



A. Handle Nut	Zinc plated carbon steel
B. Handle Assembly	Zinc plated carbon steel with vinyl insulator
C. Packing Nut	Brass
D. Stem Packing	Virgin PTFE
E. O-Ring	EPDM
G. Stem	Lead Free brass
H. Tag	Cardboard, Mylar coated both sides
I. Body	Forged Lead Free brass
J. Seats	Virgin PTFE
K. Ball	Lead Free brass (1/4" - 1") Stainless steel (1 1/4" - 3")
L. Adaptor	Forged brass

Dimensions-Weights



SIZE	C		H		I		L		L1	
in.	in.	mm	in.	mm	in.	mm	in.	mm	in.	mm
1/4	1 13/16	46	3 7/16	87	7/16	11	1 3/4	45	—	—
3/8	1 13/16	46	3 7/16	87	1/2	13	1 3/4	45	—	—
1/2	1 3/8	36	3	78	1/2	13	2	52	1 7/8	50
3/4	1 1/2	39	4 1/8	105	1 1/16	18	2 5/16	59	1 13/16	69
1	1 13/16	45	4 3/16	105	1 5/16	24	2 13/16	71	3 3/16	83
1 1/4	1 7/8	50	4 15/16	125	1 3/16	30.5	3 3/16	80	3 5/16	92
1 1/2	2 1/2	63	4 15/16	125	1 3/8	37	3 1/2	89	4 5/16	109
2	2 11/16	68	7	180	1 7/8	49.5	4 3/16	107	5 5/16	136
2 1/2	4 5/8	118	9 3/8	240	2 5/8	67	5 5/8	141	6 1/2	164
3	5	128	9 3/8	240	3 3/8	79.5	6 3/8	162	7 1/2	191



A Watts Water Technologies Company



USA: Tel. (978) 688-1811 • Fax: (978) 794-1848 • www.watts.com
Canada: Tel. (905) 332-4090 • Fax: (905) 332-7068 • www.watts.ca