

FRESNO™

KITCHEN FAUCET

WITH PULL-DOWN SPRAY



- Ceramic disc valve cartridge
- Lead Free - faucet contains $\leq 0.25\%$ total lead content by weighted volume
- 8" swivel spout
- Spout swivels at 150°
- Two-function pull-down hand spray
- Built-in vacuum breaker
- Two check valves
- Cover plate must be ordered separately
- Maximum Flow Rate: 1.8 GPM (8.3L/min)

CODES AND STANDARDS

Meets or Exceeds ASME A112.18.1/
CSA B125.1/NSF 61/Section 9

Certified Compliant with 0.25% Weighted
Average Lead Content Regulations

OPTIONAL COMPONENT

H960748.XXX 10" Cover Plate

DESCRIPTION

Kitchen Faucet with
Pull-Down Spray

PRODUCT NUMBER

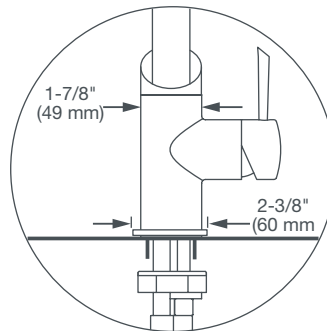
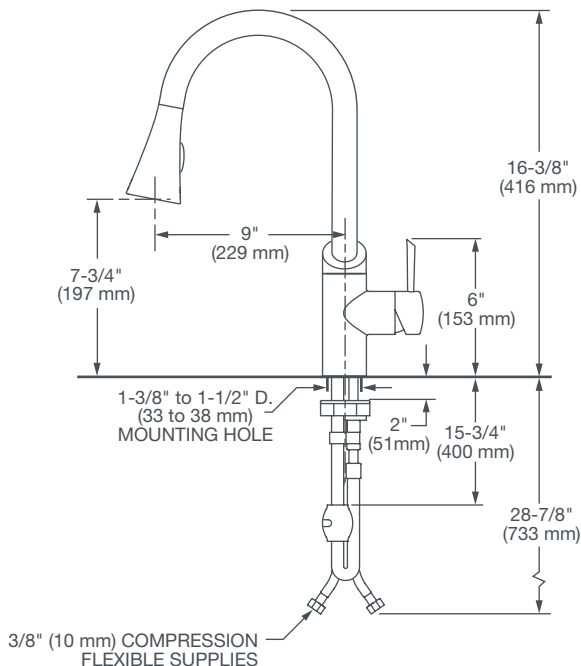
D35403300.XXX

AVAILABLE FINISHES

Polished Chrome
Ultra Steel

FINISH CODE

100
355



IMPORTANT: These measurements are subject to change or cancellation.
No responsibility is assumed for use of superseded or voided pages.

