



Thoreau®
Under-mount Bathroom Sink
K-2907-4U

Features

- KOHLER® cast iron.
- Under-mount.
- Oval basin.
- With overflow.
- Can accommodate single-hole center-mount or widespread faucet.
- 4-inch centers.
- 18-1/4" (464 mm) x 11" (279 mm)

Recommended Accessories

K- 8998 P-Trap

Components

Additional included component/s: Basin clamp assembly.



ADA

CSA B651

OBC

Codes/Standards

ASME A112.19.1/CSA B45.2

ADA

ICC/ANSI A117.1

CSA B651

OBC




**KOHLER® Lifetime Limited Warranty
for Cast Iron Components**

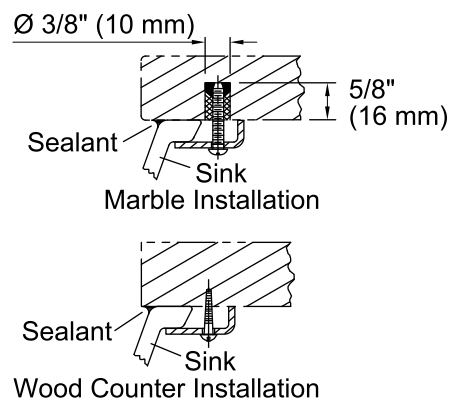
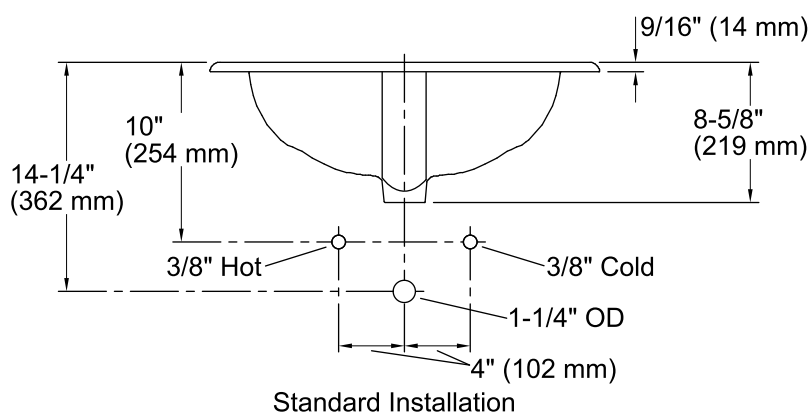
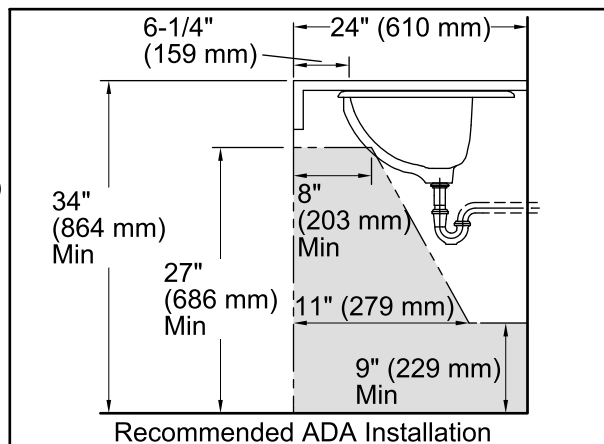
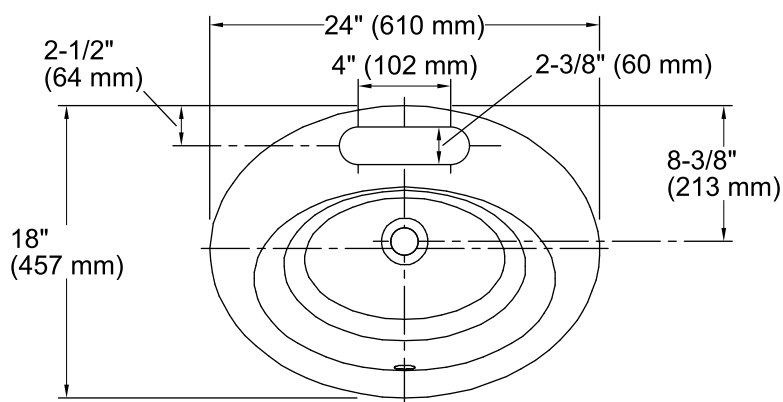
See website for detailed warranty information.

Available Color/Finishes

Color tiles intended for reference only.

Color Code Description

	0	White
	96	Biscuit
	47	Almond



Technical Information

All product dimensions are nominal.

Bowl configuration: Single

Installation: Under-mount

Bowl area
Length: 18-1/4" (464 mm)
Width: 11" (279 mm)
Water depth: 4-3/4" (121 mm)

Number of deck holes: 1

Faucet hole(s): 2-3/8" (60 mm)

Drain hole: 1-3/4" (44 mm)

Template: Under-mount, 114635-7, required, included

Notes

Install this product according to the installation guide.

ADA, OBC, CSA B651 compliant when installed to the specific requirements of these regulations.